

United States Department of the Interior
National Park Service

National Register of Historic Places Continuation Sheet

Bethlehem Steel Lehigh Plant Mill #2 Annex

Name of Property

Montgomery County, PA

County and State

Section Photographs Page 1

The following information is the same for all photographs:

Bethlehem Steel Lehigh Plant Mill #2 Annex
11 West 2nd Street
Bethlehem, Northampton, PA
August 2003
Tim Noble, Photographer

Negatives held at Noble Preservation Services, Inc., 10 Log House Road, Zionsville, PA 18092

1. View from intersection of Union Station Plaza and West 2nd Street looking northeast
2. West façade along Union Station Plaza, looking north
3. View looking southwest from banks of Lehigh River; Lehigh Valley Freight Station building in foreground not part of resource
4. Looking south and north (rear) façade
5. Looking north along east façade, obscured by New Street bridge
6. Looking west at east façade along West 2nd Street
7. View of roof monitors from New Street bridge
8. Looking north inside southwest corner entrance at Bay 6
9. Looking north along Bay 4 and former exterior wall
10. Looking northwest across bays 4, 5, and 6
11. Looking north in Bay 3; former exterior wall to the left
12. Looking north in Bay 1
13. Looking south in Bay 1; two-story office block in background along south wall
14. Detail, crane and operating platform; office block in background
15. Detail, steel structural systems; note trusswork
16. Detail, crane and operating platform
17. Detail, looking west along narrow gauge track through building
18. View from intersection of Rte 378 and West 3rd St.; building immediately right of flag in background
19. View east along West 2nd St.; Mill #2 Annex in background
20. View looking west from center of Bethlehem Steel; new buildings in foreground occupy site of Lehigh Plant Mill #2 with the roof of the Mill #2 Annex in the background

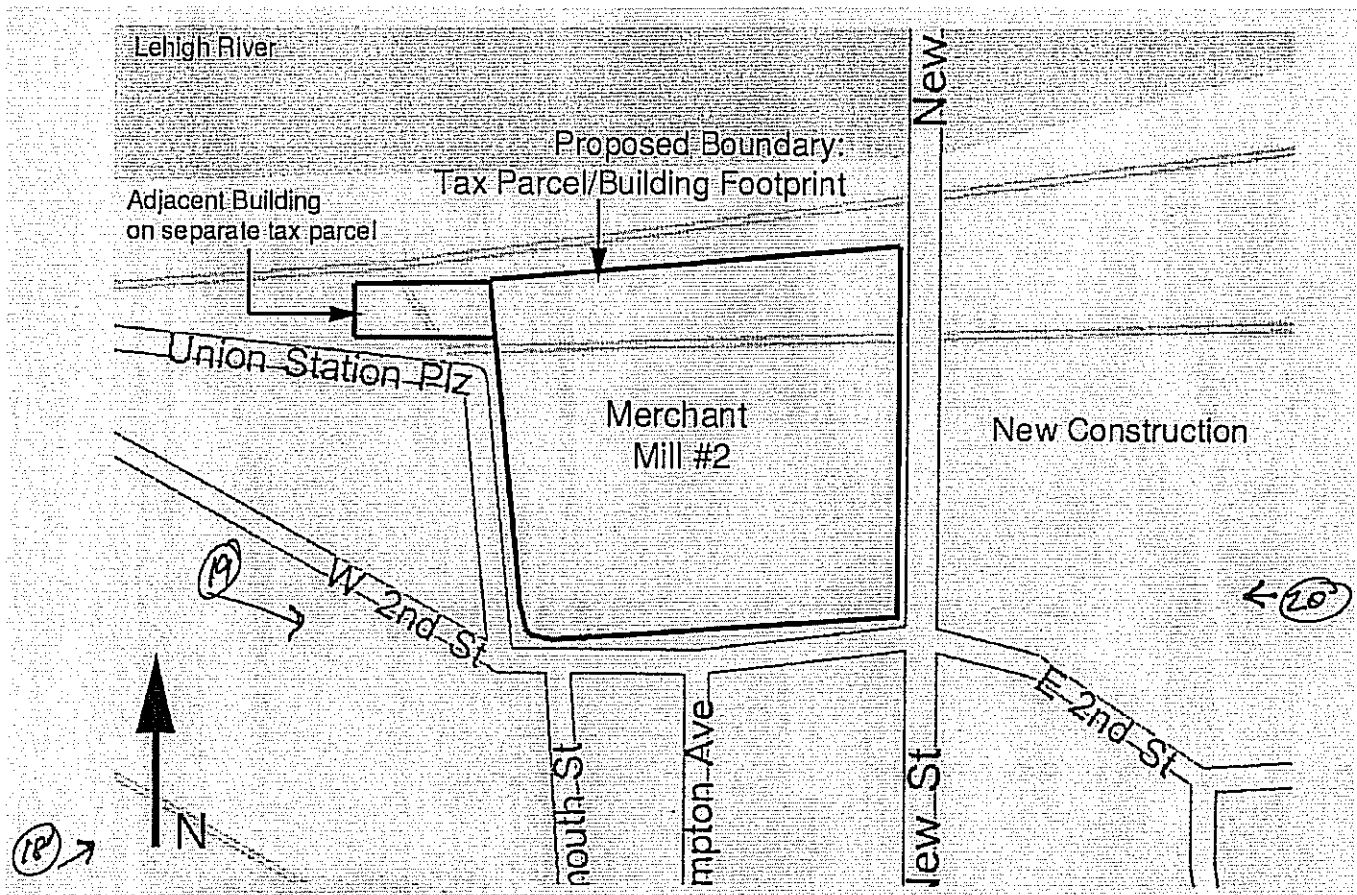
United States Department of the Interior
National Park Service

National Register of Historic Places Continuation Sheet

Bethlehem Steel Lehigh Plant Mill #2 Annex
Name of Property

Northampton County, PA
County and State

Section Photo Key and Site Map Page 1



Sketch Map, Property Site Plan, and partial Photo Key. For locations of photos 1-17, see Floor Plan.

Note: not to scale.

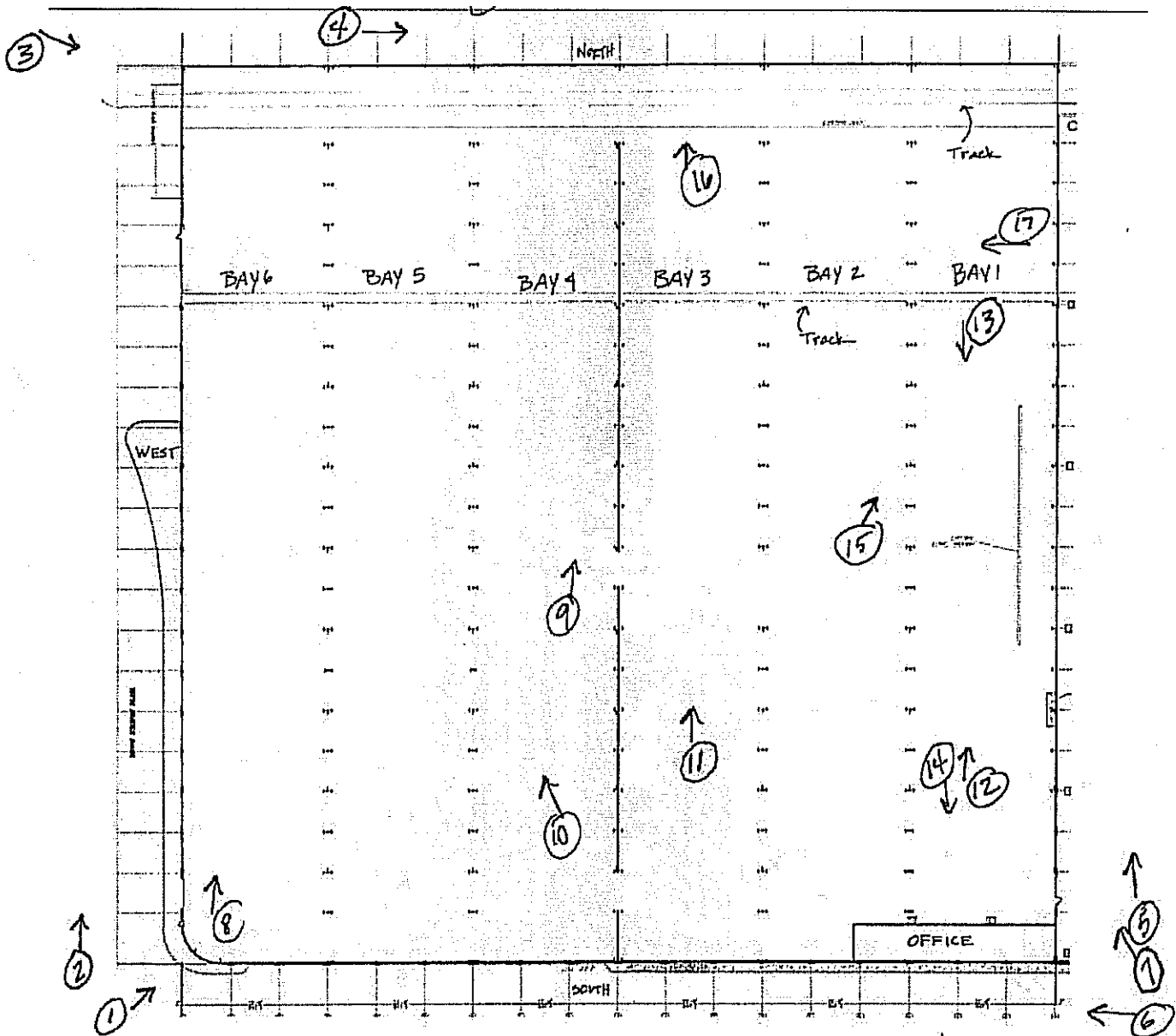
United States Department of the Interior
National Park Service

National Register of Historic Places Continuation Sheet

Bethlehem Steel Lehigh Plant Mill #2 Annex
Name of Property

Northampton County, PA
County and State

Section Photo Key and Floor Plan Page 2



Floor Plan and Photo Key, Bethlehem Steel Lehigh Plant Mill #2 Annex. Not to scale. N ↑

United States Department of the Interior
National Park Service

National Register of Historic Places Continuation Sheet

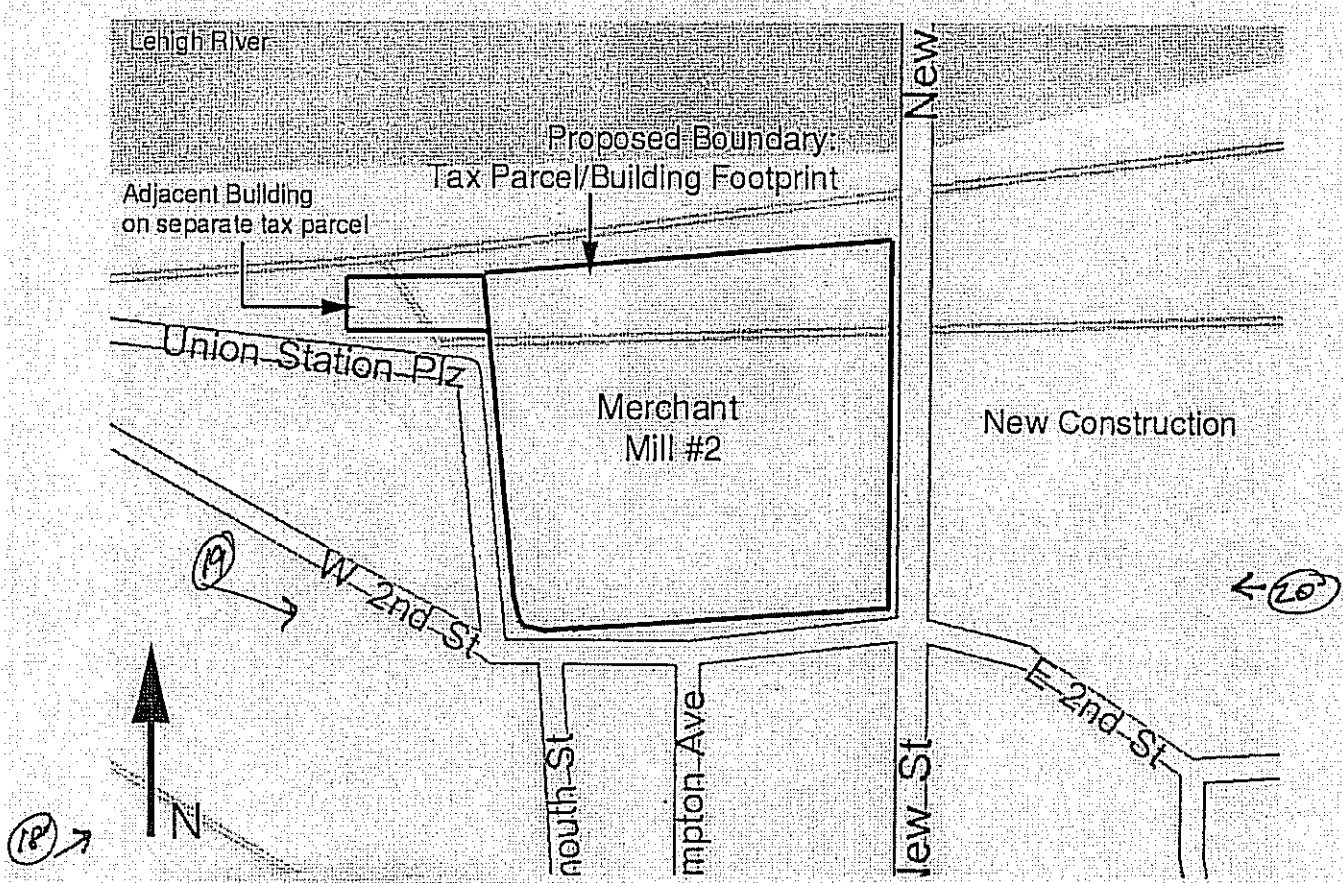
Bethlehem Steel Lehigh Plant Mill #2 Annex

Name of Property

Northampton County, PA

County and State

Section Photo Key and Site Map Page 1



Sketch Map, Property Site Plan, and partial Photo Key. For locations of photos 1-17, see Floor Plan.

Note: not to scale.

United States Department of the Interior
National Park Service

National Register of Historic Places Continuation Sheet

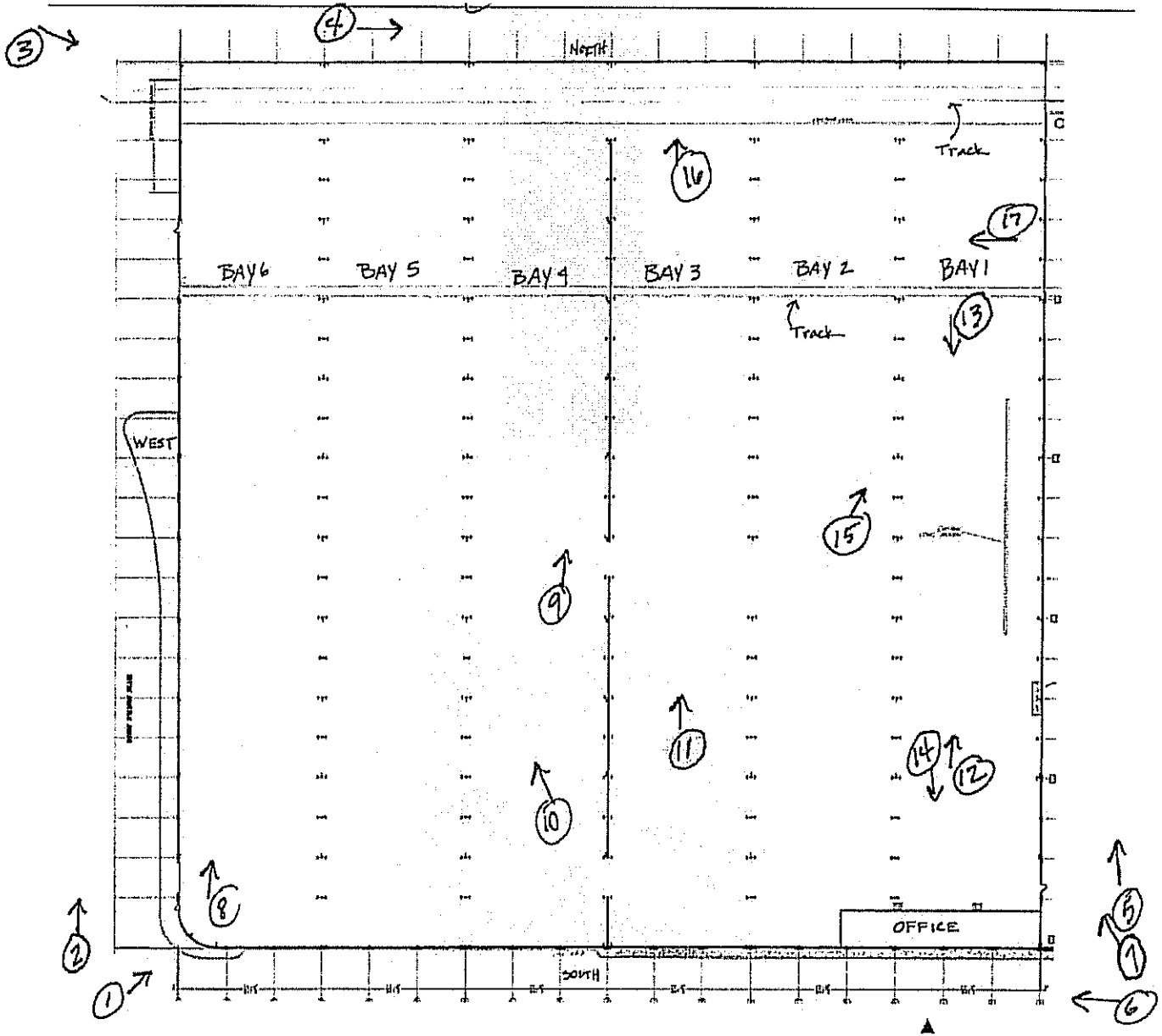
Bethlehem Steel Lehigh Plant Mill #2 Annex

Name of Property

Northampton County, PA

County and State

Section Photo Key and Floor Plan Page 2



Floor Plan and Photo Key, Bethlehem Steel Lehigh Plant Mill #2 Annex. Not to scale. N ↑

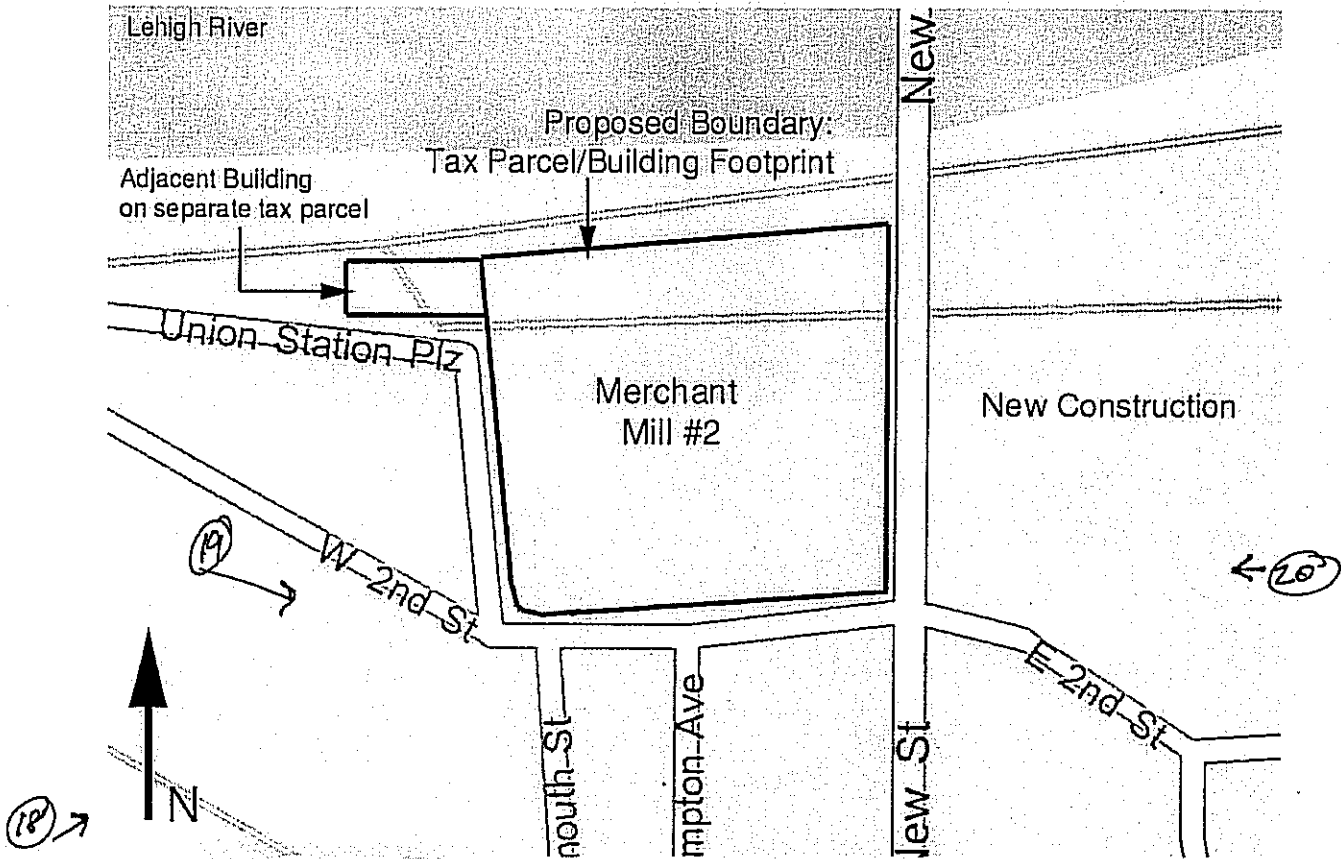
United States Department of the Interior
National Park Service

National Register of Historic Places Continuation Sheet

Bethlehem Steel Lehigh Plant Mill #2 Annex
Name of Property

Northampton County, PA
County and State

Section Photo Key and Site Map Page 1



Sketch Map, Property Site Plan, and partial Photo Key. For locations of photos 1-17, see Floor Plan.

Note: not to scale.

United States Department of the Interior
National Park Service

National Register of Historic Places Continuation Sheet

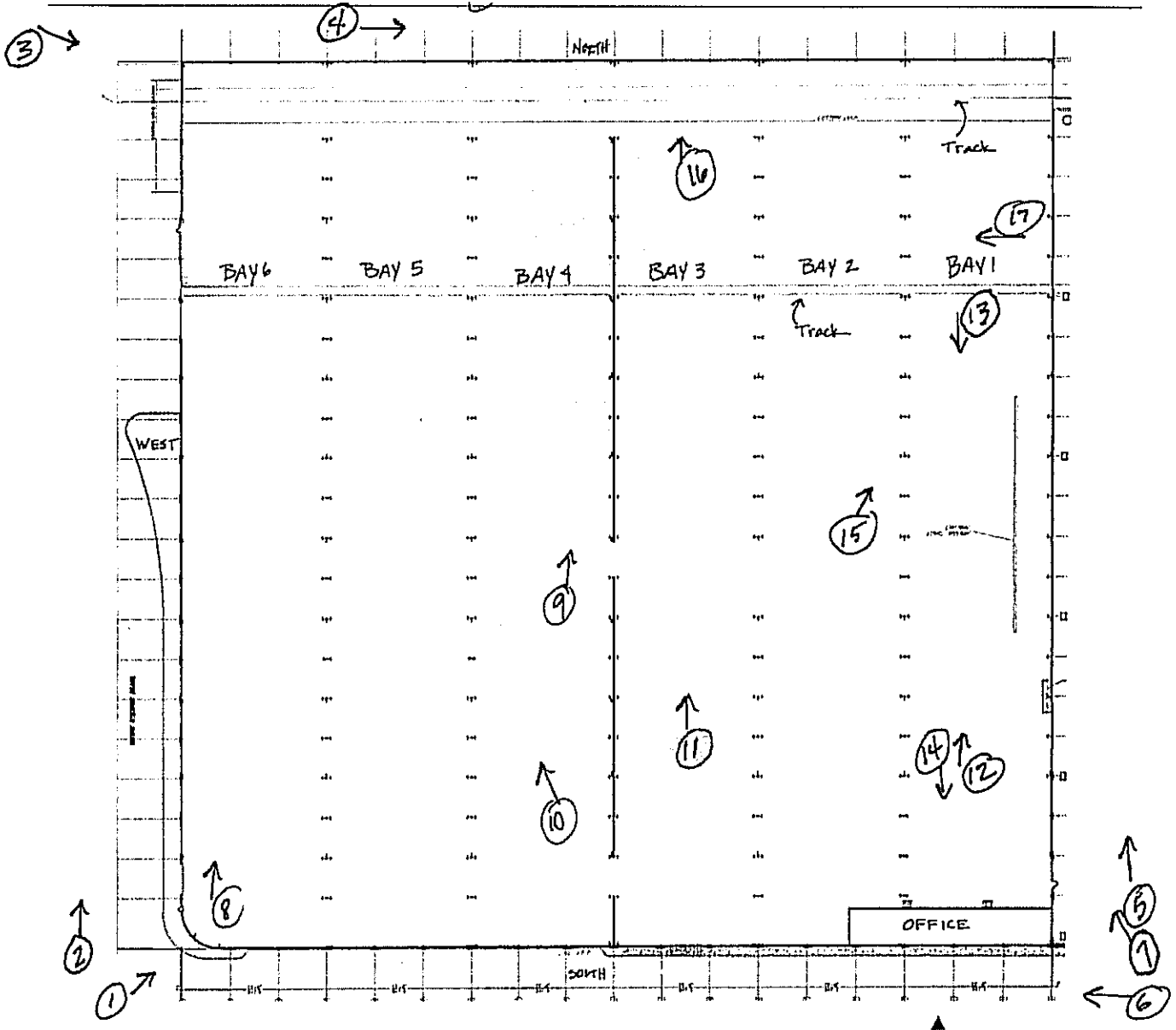
Bethlehem Steel Lehigh Plant Mill #2 Annex

Name of Property

Northampton County, PA

County and State

Section Photo Key and Floor Plan Page 2



Floor Plan and Photo Key, Bethlehem Steel Lehigh Plant Mill #2 Annex. Not to scale. N ↑

Bethlehem Steel Lehigh Plant Mill #2 Annex
Northampton County, PA

Figure 1: Bethlehem Steel Company, Bethlehem Plant, Master Organization Chart

Source: Bethlehem Steel Corporation. "Bethlehem Steel Company, Bethlehem Plan, Organization and Operations The 1962 Loop Course." Employee Orientation Manual. Bethlehem, PA: Bethlehem Steel Corporation, 1962.

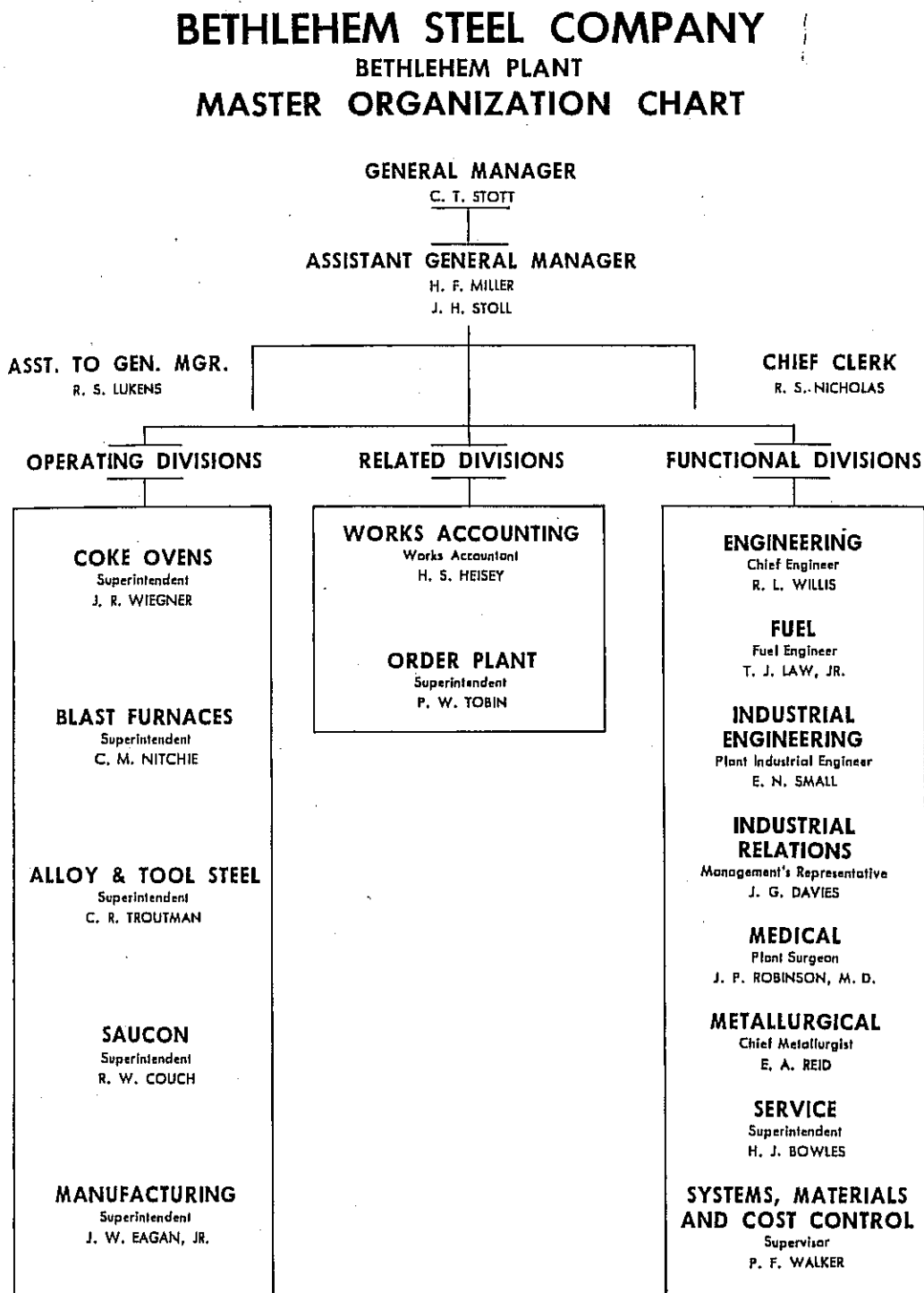


Figure 2: Bethlehem Steel Company, Bethlehem Plant, Alloy and Tool Steel Division Chart

Source: Bethlehem Steel Corporation. "Bethlehem Steel Company, Bethlehem Plan, Organization and Operations The 1962 Loop Course." Employee Orientation Manual. Bethlehem, PA: Bethlehem Steel Corporation, 1962.

ALLOY AND TOOL STEEL DIVISION

The Alloy and Tool Steel Division is set up to handle the melting, rolling, forging, heat-treatment, and finishing of low, medium, and high-alloy steels and tool steel. The addition of alloying elements and the special methods of manufacturing and treatment produce physical properties such as hardness, toughness, heat-resistance, corrosion-resistance, ductility, etc. Products are made to customer's specifications and generally in quantities required.

The organization of the division is as follows:

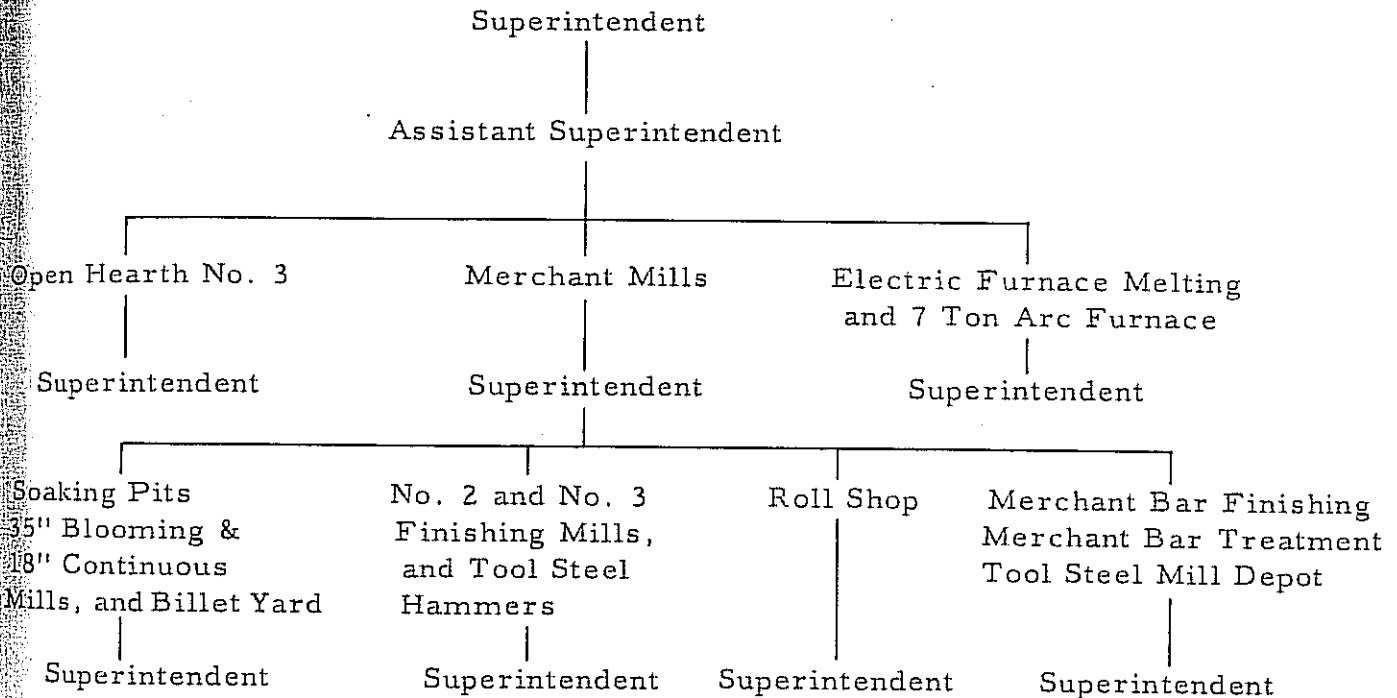
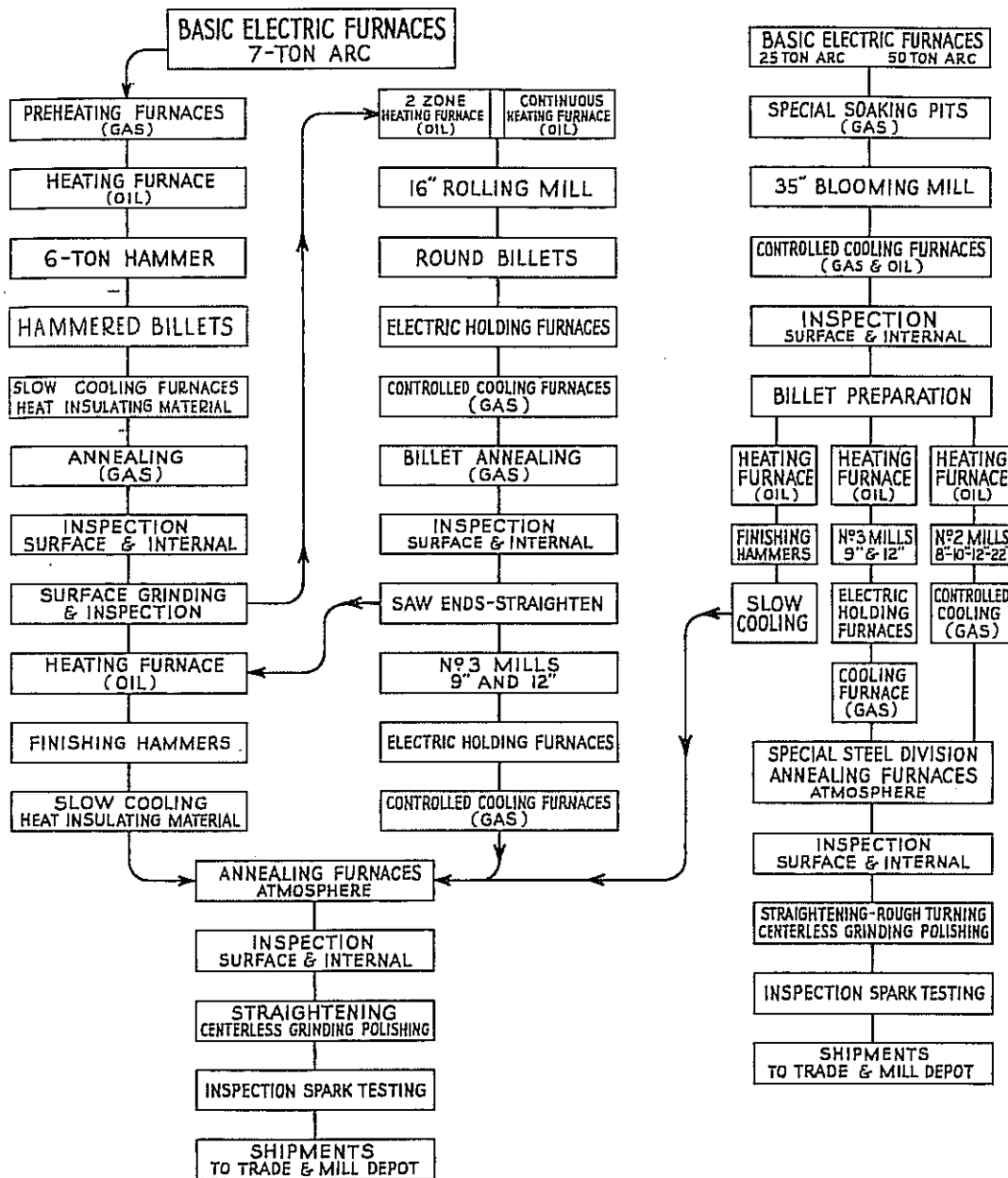
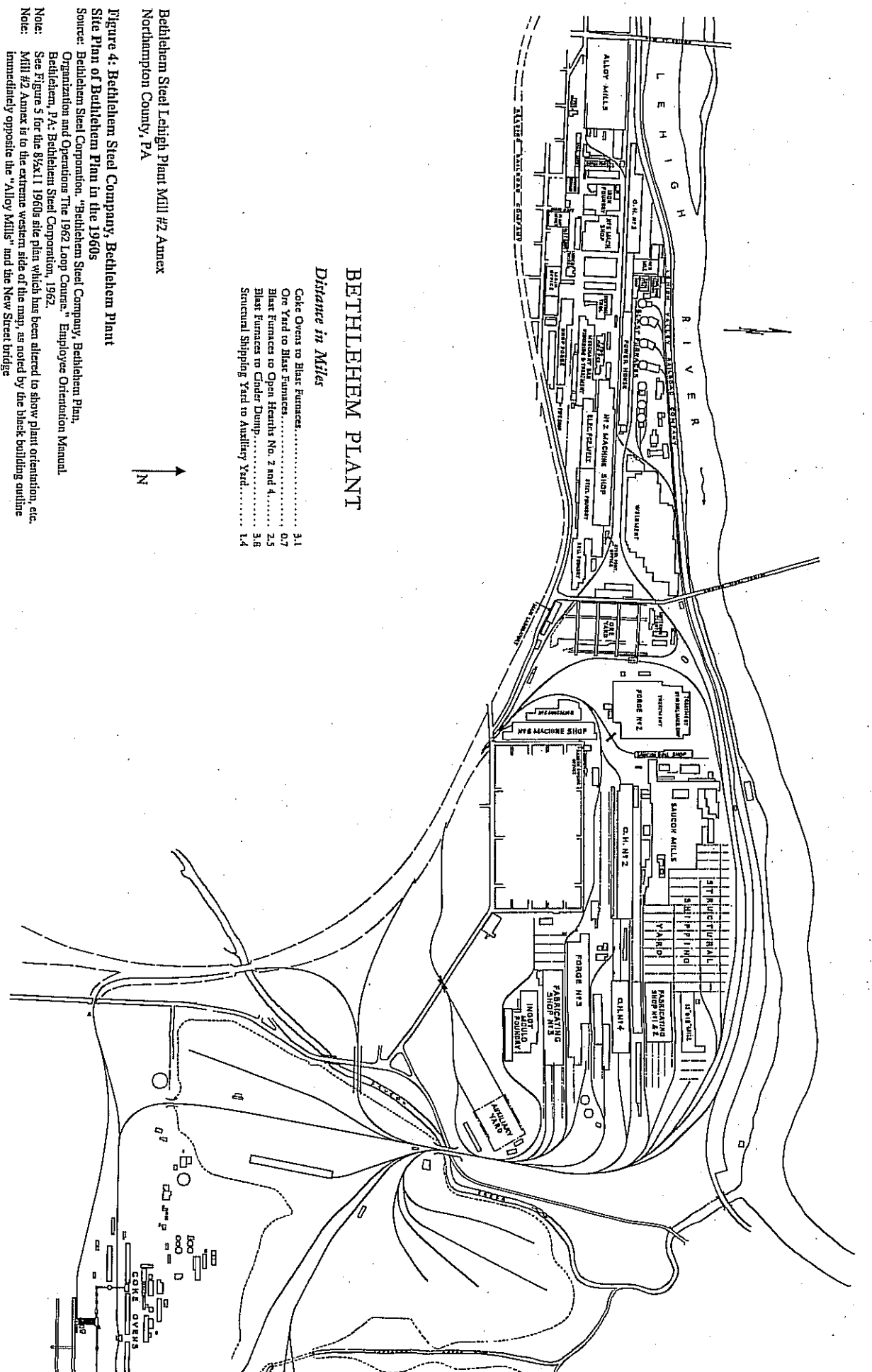


Figure 3: Bethlehem Steel Company, Bethlehem Plant, Tool Steel Department Material Flow Sheet
 Source: Bethlehem Steel Corporation. "Bethlehem Steel Company, Bethlehem Plant, Organization and Operations The 1962 Loop Course." Employee Orientation Manual. Bethlehem, PA: Bethlehem Steel Corporation, 1962.



TOOL STEEL DEPARTMENT
 MATERIAL FLOW SHEET



Bethlehem Steel Lehigh Plant Mill #2 Annex
Northampton County, PA

Figure 4: Bethlehem Steel Company, Bethlehem Plant
Site Plan of Bethlehem Plant in the 1960s

Source: Bethlehem Steel Corporation, "Bethlehem Steel Company, Bethlehem Plant, Organization and Operations The 1962 Loop Course," Employee Orientation Manual, Bethlehem, PA; Bethlehem Steel Corporation, 1962.

Note: See Figure 5 for the 8½x11 1960s site plan which has been altered to show plant orientation, etc.

Note: Mill #2 Annex is to the extreme western side of the map, as noted by the black building outline immediately opposite the "Alloy Mills" and the New Street bridge.