

United States Department of the Interior
National Park Service

National Register of Historic Places
Continuation Sheet

Waverly Historic District
Lackawanna County, PA

Section Number Illustrations Page 12



Figure 12 Shown above are the Madison Academy (1844) with the 1897 Waverly Borough School directly behind it. After the Borough school was erected, the Academy was razed, and after a new school was built in the 1920s, the 1897 school was demolished and replaced by the house and dependencies at 112 Academy Street (Resource No. 84).

United States Department of the Interior
National Park Service

National Register of Historic Places
Continuation Sheet

Waverly Historic District
Lackawanna County, PA

Section Number Photo Log Page 1

PHOTO LOG

All photographs: **Waverly Historic District**
Lackawanna County, Pennsylvania
2002
David L. Taylor
Taylor & Taylor Associates, Inc.
9 Walnut Street
Brookville, PA 15825

1. Waverly Community House, northeast perspective, looking southwest, showing main building and a portion of the northern wing
2. Streetscape, Abington Road at Clinton Street, with 1201 Abington Road in the foreground, looking east along Clinton Street
3. Rock wall in front of 1200 Abington Road, typical of many such structures throughout the district, looking east
4. Streetscape, west side Abington Road, looking north
5. Abington Road, west side, looking north, with Waverly School (the Little Schoolhouse) in the background
6. Eastlake-style porch on the property at 1215 Abington Road, looking north
7. Bungalow at 1212 Abington Road, looking east
8. 1214 Abington Road (right) and First Baptist Church (left), Abington Road, east side, looking north
9. 1219 Abington Road, facade, looking west
10. Streetscape, Abington Road, west side, looking south from the intersection of Cole Street

United States Department of the Interior
National Park Service

National Register of Historic Places
Continuation Sheet

Waverly Historic District
Lackawanna County, PA

Section Number Photo Log Page 2

11. 1112 Abington Road, facade, looking east
12. Streetscape, east side Abington Road, with 1110 Abington Road in foreground, looking east
13. Streetscape, Church Street, south side, 103 Church Street in the foreground and the Methodist Church in the center of the view, looking southwest
14. 101 Beech Street, facade, looking west
15. 107 Beech Street, southeast perspective, looking northwest
16. Streetscape, west side Beech Street, looking north toward Clinton Street
17. Intersection Beech and Clinton Street, looking east toward Clinton Street streetscape
18. 103 Clinton Street, facade and west elevation, looking northeast
19. 105 Carbondale Road, shingle-clad Greek Revival-style upright-and-wing house, facade, looking northwest
20. Bungalow at 208 Beech Street, looking northeast, showing shingle and weatherboard-clad siding, overall character, etc.
21. Streetscape, north side Clinton Street, looking east near the intersection of Lynwood Road
22. Streetscape, north side Clinton Street, looking east from the intersection of Waverly Road
23. Clinton Street (Resource No. 69), facade, looking northeast, showing similarity to Resource No. 11
24. Estate property at 109 Academy Street, looking northwest, showing facade and overall scale of this, the largest single property in the district
25. 112 Academy Street, built on the site of the Madison Academy and the 1890s Waverly School, looking southeast and showing facade of the property

United States Department of the Interior
National Park Service

National Register of Historic Places
Continuation Sheet

Waverly Historic District
Lackawanna County, PA

Section Number Photo Log Page 3

26. A. M. E. Church, (Resource No. 104), southeast perspective looking northwest, show existing character, including the added chimney on the south gable end and various additions which have significantly altered the character of the building and have resulted in its being designated "noncontributing."
27. Streetscape, north side Carbondale Road, looking east toward northeast corner of the district.
28. Blacksmith shop, Abington Road, facade, showing generally unaltered character (compare to Fig. 7), looking west
29. East side Abington Road, looking east and showing facade of 1306 (Abington Road)

**WAVERLY
HISTORIC DISTRICT**
Lackawanna County, Pennsylvania

Prepared by
TAYLOR & TAYLOR ASSOCIATES, INC.
Historic Preservation & Community Development Specialists
8 Walnut Street
Brookville, PA 15825
614-849-4900
2003

DISTRICT MAP

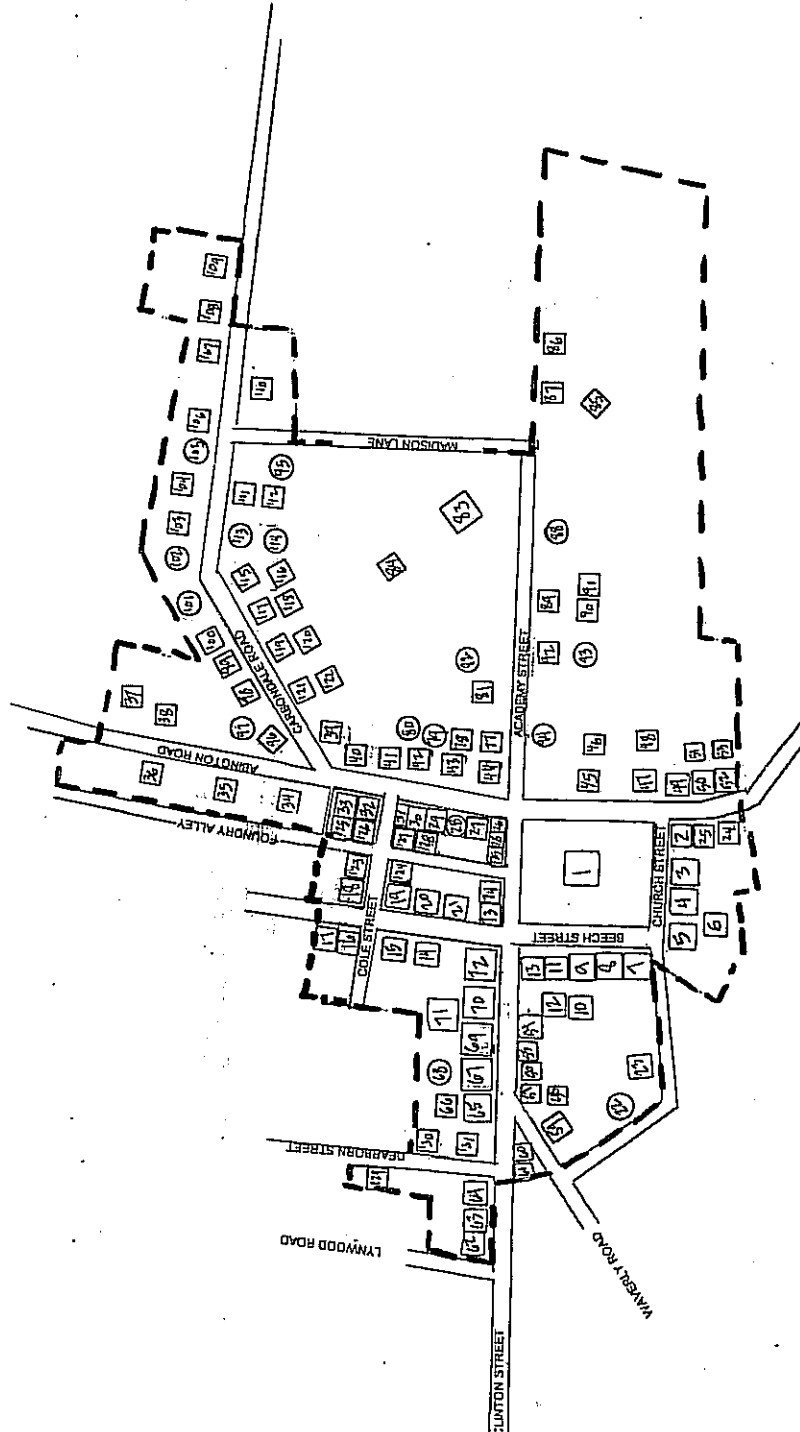


District Boundary: - - - - -

Contributing Resources □

Non-contributing Resources ○

Numbers correspond to the individual properties which are listed in the Resource Inventory prepared in conjunction with the National Register documents.



**WAVERLY
HISTORIC DISTRICT**
Lackawanna County, Pennsylvania

Prepared by
TAYLOR & TAYLOR ASSOCIATES, INC.
Historic Preservation & Community Development Specialists
9 Walnut Street
Brookville, PA 16825
814-848-4800
2003

DISTRICT MAP (PHOTOGRAPHY)



Legend:

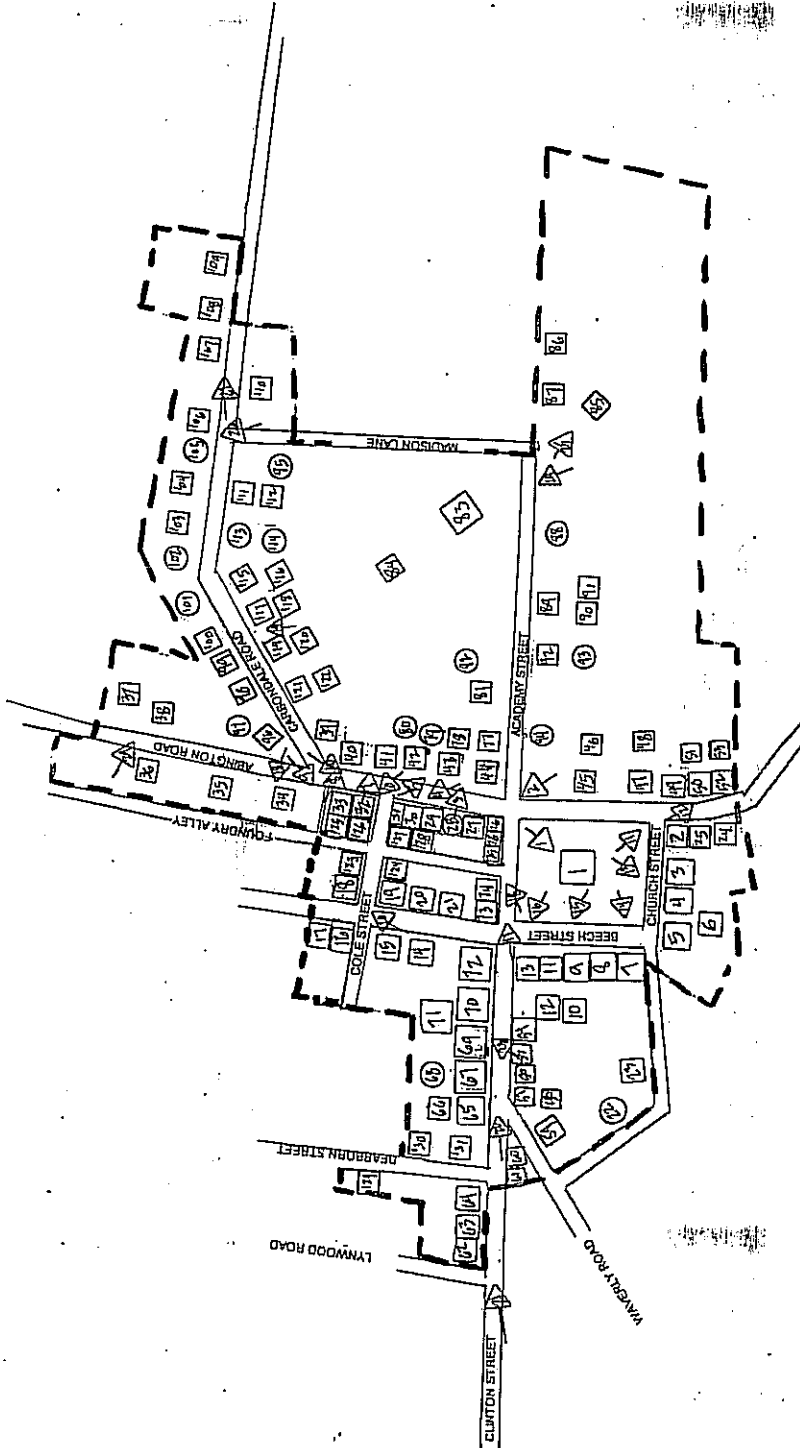
District Boundary: - - - - -

Contributing Resources: □

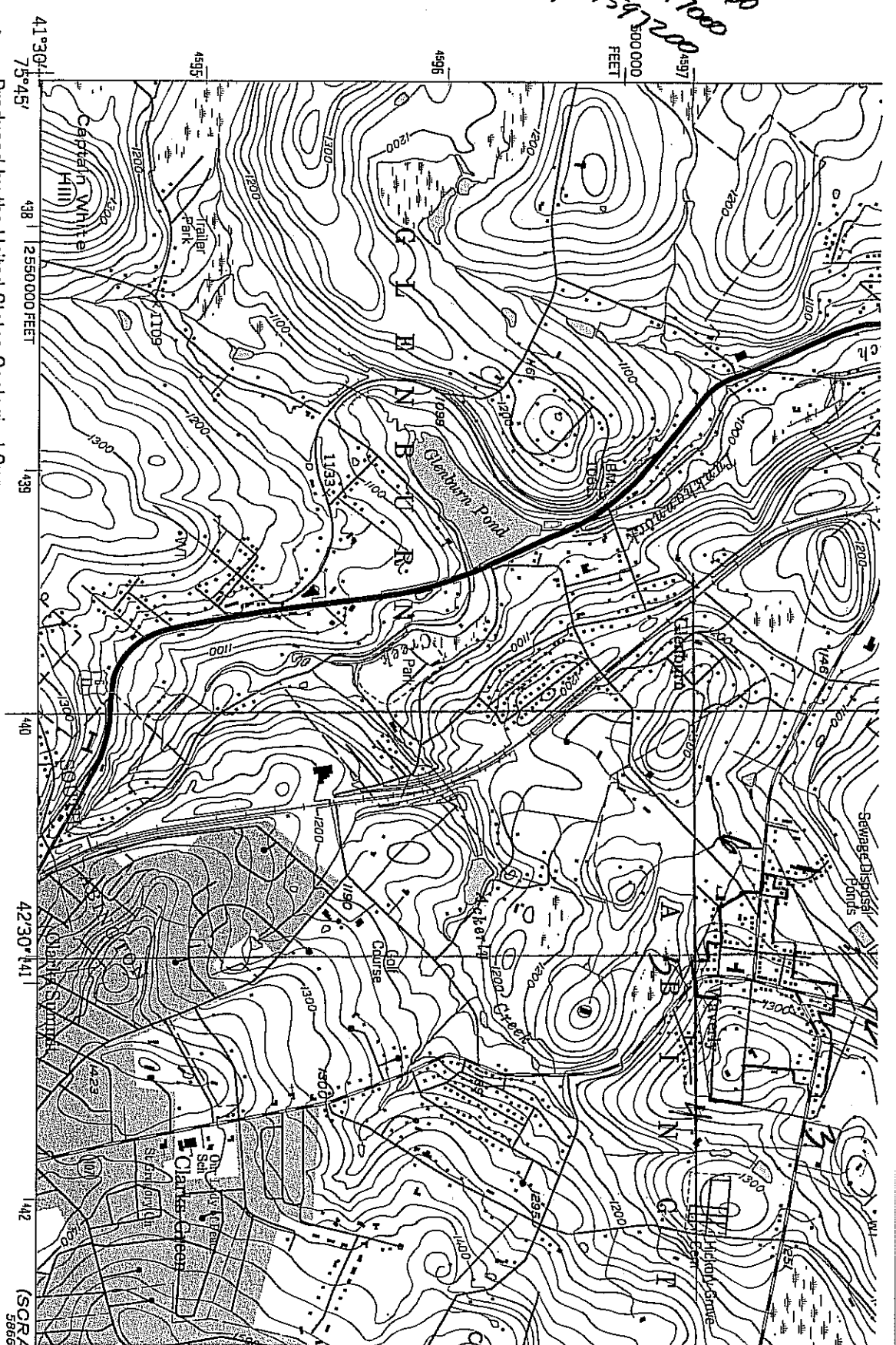
Non-contributing Resources: ○

Photo Number and Camera Orientation: ↗

Numbers correspond to the individual properties which are listed in the Resource Inventory prepared in conjunction with the National Register documents.

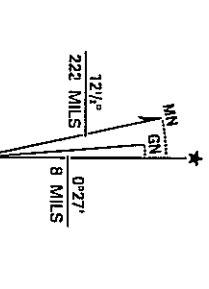


1. 18/441/260/4597160
 2. 18/441/260/4597160
 3. 18/441/260/4597160
 4. 18/441/260/4597160
 5. 18/441/260/4597160
 6. 18/441/260/4597160



RANSOM
 5866

Produced by the United States Geological Survey
 Compiled by photogrammetric methods from imagery dated 1942
 Field checked 1946. Revised from imagery dated 1992
 and other sources. Field checked 1994. Map edited 1995
 North American Datum of 1927 (NAD 27). Projection and
 10 000-foot ticks: Pennsylvania coordinate system, north zone
 (Lambert conformal conic)
 Blue 1000-meter Universal Transverse Mercator ticks, zone 18
 North American Datum of 1983 (NAD 83) is shown by dashed
 corner ticks. The values of the shift between NAD 27 and NAD 83
 for 7.5-minute intersections are obtainable from National Geodetic
 Survey NADCON software
 There may be private inholdings within the boundaries of



UTM GRID AND 1995 MAGNETIC NORTH
 DECLINATION AT CENTER OF SHEET
 SCALE
 1 1/2 1
 1000 0 1000 2000 3000
 1 5
 NATIONAL GEODETIC VI
 CONTOUR INTI
 FOR SALE BY U.S. G
 DENVER, COLORADO 80225,
 A FOLDER DESCRIBING TOPOGRAPHIC MAP

United States Department of the Interior
National Park Service

National Register of Historic Places
Continuation Sheet

Waverly Historic District
Lackawanna County, PA

Section Number Resource Inventory Page 1

RESOURCE INVENTORY

The following properties lie within the Waverly Historic District. The numbering corresponds to the district map which accompanies the nomination documents. All properties are assumed to contribute to the character of the district except those after whose description an "NC" appears; these properties are non-contributing to the character of the district, either because they date from outside the Period of Significance of the district or because their extent of alteration has significantly compromised their individual character with reference to the district.

1. 1115 Abington Road (Waverly Community House): 3-story Dutch Colonial Revival-style institutional building of Flemish bond brick; five-bay facade with a centered entry with pedimented frontispiece above which is a marble stone engraved with: *Waverly Community House Builded [sic] for the people of the community in memory of Henry Belin, Jr. Cornerstone dated 1919*; 2-hipped-roofed wings (1930-1931) on either side accessed by arcaded loggias. George M. D. Lewis, architect of original building and wings.
2. 101 Church Street: 2-story eclectic residence of wood with multiple roof system; flat-topped windows and a rectangular bay window on the facade; compatible addition at rear, erected late in the period of significance of the district (c. 1880)
3. 103 Church Street: 2½-story central-passage double-pile residence of wood, with 5-bay facade and centered entrance with semi-circular transom sash; gable roof, laterally oriented to the street with exterior gable-end chimneys; single-story shed-roofed porch on left side; fenestration flat-topped with simple surrounds (c. 1850)
4. 105 Church Street (Waverly Methodist Episcopal Church): 1-story Gothic Revival-style religious building of wood construction, clad in non-historic siding, with gable roof and gable-end orientation to the street; lancet-arched windows with religious art glass; 3-bay facade with extended center bay terminating in open belfry; date stone bears dates 1842-1921; 1-story addition at rear
5. 107 Church Street: 2-story gabled ell, vernacular in character with intersecting gable roof and 1-story hipped roof extending across the facade; windows flat-topped with replacement sash (1874)

United States Department of the Interior
National Park Service

National Register of Historic Places
Continuation Sheet

Waverly Historic District
Lackawanna County, PA

Section Number Resource Inventory Page 2

6. rear, 107 Church Street: 1-story 2-car garage located at the left rear of the building lot and associated with 107 Church Street (c. 1930)
7. 101 Beech Street: 2½-story Greek Revival upright-and-wing residence of wood construction with gable roof and gable-end orientation to the street and a 2-story wing extending laterally on the left side with paired wall dormers and a glassed-in sun porch; side passage plan with main entrance offset on the facade, articulated by transom sash and sidelights; 1-story veranda with shed roof and Eastlake-style trim. A historic stone hitching post with the initial "M" is in front of the house, matching a similar hitching post on 107 Beech Street (1856)
8. 103 Beech Street: 2½-story Greek Revival-style residence of wood, with L-shaped plan and intersecting gable roof; the main body of the house is arranged in a central-passage plan with a modest frontispiece and recessed entry with sidelights; windows flat-topped with multi-light sash; corner pilasters define the corners of the main body of the house (1848)
9. 105 Beech Street: 2½-story vernacular residence of wood with hipped and gabled roof system and paired pediments on the facade, between which is a semi-octagonal turret penetrating the roof line; windows flat-topped with modest heads; 1-story hipped roof porch extends across the facade and wraps around a portion of the left side (c. 1880)
10. Rear, 105 Beech Street: 1-story garage which sits at the right rear of the property (c. 1920)
11. 107 Beech Street: 2-story Greek Revival-style residence of wood, with gable roof and gable-end orientation to the street, 2-bay facade on the main portion of the house, which is flanked by shed-roofed wings with corner pilasters; windows flat-topped with exterior shutters; historic stone hitching post in front, matching that on 101 Beech Street (1850)
12. side, 107 Beech Street: 1-story garage of wood (c. 1930)
13. 109 Beech Street: 2-story Greek Revival-style residence, with a central-passage plan; of wood construction with a 5-bay facade and centered entry; windows flat-topped with exterior operable shutters; some windows set in pairs; at least three twentieth-century additions on left side, including one addition incorporating a 2-car garage (c. 1850)

United States Department of the Interior
National Park Service

National Register of Historic Places
Continuation Sheet

Waverly Historic District
Lackawanna County, PA

Section Number Resource Inventory Page 3

14. 203 Beech Street: 2-story vernacular residence of wood with laterally-oriented gable roof and three-bay facade, with centered entry and shed-roofed porch extending over the center and left bay; fenestration flat-topped with modest heads; single-story sun-room addition set on concrete block foundation is on left side and a late twentieth-century compatible addition is at the rear (c. 1900)
15. 205 Beech Street: 2-story American Foursquare residence of wood with gable roof and gable-end orientation to the street; partial return on the cornice; original porch replaced by gabled addition; windows flat-topped; early 1-story addition with exterior stone chimney is at left side; original first story is weatherboard, second story is shingle-clad; on rock-faced concrete block foundation (c. 1920)
16. 207 Beech Street: 2½-story American Foursquare of wood with hipped roof and large hipped dormer on facade; 2-bay facade with flat-topped windows set in pairs; hipped-roof porch extends across facade and has been glassed-in (c. 1920)
17. 209 Beech Street: 2-story Greek Revival-style vernacular residence of wood, with gable roof and gable-end orientation to the street; small flat-topped windows with multi-light sash; main entrance offset on right side of the facade, suggesting a side -passage interior plan (c. 1850)
18. 208 Beech Street: 1½-story Craftsman Bungalow of wood, set on a foundation of rock-faced concrete block; laterally-oriented gable roof and large gable dormer with a balcony and recessed front porch supported by Arts-and-Crafts-style paired posts; first story is finished in weatherboard, the second in shingles; some art glass transom sash (c. 1920)
19. 206 Beech Street: 2½-story Dutch Colonial Revival-style residence finished in stucco, with gambrel roof and large 2-bay shed dormers on facade and rear elevations; three-bay facade with centered entry, suggesting a central-passage interior plan; 1-story sun porch on right side (c. 1920)
20. 204 Beech Street: 1-story brick building of indeterminate use with flat-topped windows (c. 1900)
21. 202 Beech Street: 1½-story Bungalow of wood, with foundation of concrete block and stone and a hipped roof penetrated by a large hipped dormer which is centered on the

United States Department of the Interior
National Park Service

National Register of Historic Places
Continuation Sheet

Waverly Historic District
Lackawanna County, PA

Section Number Resource Inventory Page 4

facade over the front porch which in turn is recessed beneath the sweep of the roof and is supported by paired posts; 3-bay facade with centered entry (c. 1920)

22. 111 School Street: 2-story residence of wood with 3-bay facade and laterally-oriented gable roof and rounded portico has been erected with resultant loss of integrity (NC)
23. 113 School Street: 2-story vernacular cottage of wood with laterally-oriented gable roof and centered gable on the facade; 3-bay facade with centered entry; concrete block foundation; (c. 1940)
24. 1109 Abington Road: 1½-story Arts-and-Crafts-style Bungalow of wood construction with laterally-oriented gable roof and a large dormer recessed into the slope of the roof on the facade; exterior clad in asbestos shingles; foundation of coursed rubble stone (c. 1920)
25. 1111 Abington Road: 2-story Greek Revival-style residence with gable roof and gable-end orientation to the street and three-bay facade with main entrance offset on the right, suggesting a side-passage interior plan; main entrance defined by modest frontispiece; fenestration is flat-topped without notable ornament except on facade where there are French windows with molded trim on main floor; laterally-oriented addition with bay window is on rear, likely dating from the 1880s; modern addition of two stories with 2-car garage is on right side. (1852)
26. 1201 Abington Road: 2-story Greek Revival commercial building of brick with flat roof and original storefront; three-bay upper facade with flat-topped windows (c. 1830)
27. 1203 Abington Road: 2-story upright-and-wing Greek Revival-style residence of wood with 3-bay facade with main entrance offset on left; multi-light windows and corner pilasters; full return on cornice (1845)
28. 1207 Abington Road: 2-story originally Greek Revival residence with brick cladding on facade and modern addition and other alterations, with resultant loss of integrity (1845; NC)
29. 1211 Abington Road: 2-story Greek Revival residence of wood construction with gable roof and gable-end orientation to the street; 3-bay facade with six-over-six-light