

United States Department of the Interior
National Park Service

National Register of Historic Places
Registration Form

This form is for use in nominating or requesting determinations for individual properties and districts. See instructions in *How to Complete the National Register of Historic Places Registration Form* (National Register Bulletin 16A). Complete each item by marking "x" in the appropriate box or by entering the information requested. If an item does not apply to the property being documented, enter "N/A" for "not applicable." For functions, architectural classification, materials, and areas of significance, enter only categories and subcategories from the instructions. Place additional entries and narrative items on continuation sheets (NPS Form 10-900a). Use a typewriter, word processor, or computer, to complete all items.

1. Name of Property

historic name The Protection of the Flag Monument

other names/site number Defense of the Flag Monument

2. Location

street & number 715 South Main Street N/A not for publication

city or town Athens N/A vicinity

state Pennsylvania code PA county Bradford code 015 zip code 18810

3. State/Federal Agency Certification

As the designated authority under the National Historic Preservation Act, as amended, I hereby certify that this nomination request for determination of eligibility meets the documentation standards for registering properties in the National Register of Historic Places and meets the procedural and professional requirements set forth in 36 CFR Part 60. In my opinion, the property meets does not meet the National Register criteria. I recommend that this property be considered significant nationally statewide locally. (See continuation sheet for additional comments.)

Signature of certifying official/Title _____ Date _____

State of Federal agency and bureau _____

In my opinion, the property meets does not meet the National Register criteria. (See continuation sheet for additional comments.)

Signature of certifying official/Title _____ Date _____

State or Federal agency and bureau _____

4. National Park Service Certification

I hereby certify that the property is:

entered in the National Register.
 See continuation sheet.

determined eligible for the National Register
 See continuation sheet.

determined not eligible for the National Register.

removed from the National Register.

other, (explain:)

Signature of the Keeper

Date of Action

5. Classification

Ownership of Property
(Check as many boxes as apply)

- private
- public-local
- public-State
- public-Federal

Category of Property
(Check only one box)

- building(s)
- district
- site
- structure
- object

Number of Resources within Property
(Do not include previously listed resources in the count.)

Contributing	Noncontributing	
		buildings
		sites
		structures
1	6	objects
1	6	Total

Name of related multiple property listing
(Enter "N/A" if property is not part of a multiple property listing.)

N/A

Number of contributing resources previously listed in the National Register

0

6. Function or Use

Historic Functions
(Enter categories from instructions)

Recreation and Culture/monument
Recreation and Culture/work of art

Current Functions
(Enter categories from instructions)

Recreation and Culture/monument
Recreation and Culture/work of art

7. Description

Architectural Classification
(Enter categories from instructions)

Classical Revival

Materials
(Enter categories from instructions)

foundation Granite
walls n/a
roof n/a
other Bronze

Narrative Description

(Describe the historic and current condition of the property on one or more continuation sheets.)

8. Statement of Significance

Applicable National Register Criteria

(Mark "x" in one or more boxes for the criteria qualifying the property for National Register listing.)

- A** Property is associated with events that have made a significant contribution to the broad patterns of our history.
- B** Property is associated with the lives of persons significant in our past.
- C** Property embodies the distinctive characteristics of a type, period, or method of construction or represents the work of a master, or possesses high artistic values, or represents a significant and distinguishable entity whose components lack individual distinction.
- D** Property has yielded, or is likely to yield, information important in prehistory or history.

Criteria Considerations

(Mark "x" in all the boxes that apply.)

Property is:

- A** owned by a religious institution or used for religious purposes.
- B** removed from its original location.
- C** a birthplace or grave.
- D** a cemetery.
- E** a reconstructed building, object, or structure.
- F** a commemorative property.
- G** less than 50 years of age or achieved significance within the past 50 years.

Areas of Significance

(Enter categories from instructions)

Art

Period of Significance

1900-02

Significant Dates

1900, 1901, 1902

Significant Person

(Complete if Criterion B is marked above)

N/A

Cultural Affiliation

N/A

Architect/Builder

McKim, Mead & White

Albro, Lewis Colt

Brewster, George Thomas (sculptor)

Narrative Statement of Significance

(Explain the significance of the property on one or more continuation sheets.)

9. Major Bibliographical References

Bibliography

(Cite the books, articles, and other sources used in preparing this form on one or more continuation sheets.)

Previous documentation on file (NPS):

- preliminary determination of individual listing (36 CFR 67) has been requested
- previously listed in the National Register
- previously determined eligible by the National Register
- designated a National Historic Landmark
- recorded by Historic American Buildings Survey # _____
- recorded by Historic American Engineering Record # _____

Primary location of additional data:

- State Historic Preservation Office
- Other State agency
- Federal agency
- Local government
- University
- Other

Name of repository:

Tioga Point Museum

10. Geographical Data

Acreage of Property approx. 1 acre

UTM References

(Place additional UTM references on a continuation sheet.)

1	18	37	4	32	0	4	64	5	22	0
Zone	Easting			Northing						
2										

3										
Zone	Easting			Northing						
4										

See continuation sheet

Verbal Boundary Description

(Describe the boundaries of the property on a continuation sheet.)

Boundary Justification

(Explain why the boundaries were selected on a continuation sheet.)

11. Form Prepared By

name/title Barbara E. Ebert

organization Cayuga Preservation Consultants date August 31, 2000

street & number 206 Lake Avenue No. 1 telephone (607) 273-1149

city or town Ithaca state NY zip code 14850

Additional Documentation

Submit the following items with the completed form:

Continuation Sheets

Maps

A USGS map (7.5 or 15 minute series) indicating the property's location.

A Sketch map for historic districts and properties having large acreage or numerous resources.

Photographs

Representative black and white photographs of the property.

Additional items

(Check with the SHPO or FPO for any additional items)

Property Owner

(Complete this item at the request of SHPO or FPO.)

name Borough of Athens

street & number 2 South River Street telephone _____

city or town Athens state PA zip code 18810

Paperwork Reduction Act Statement: This information is being collected for applications to the National Register of Historic Places to nominate properties for listing or determine eligibility for listing, to list properties, and to amend existing listings. Response to this request is required to obtain a benefit in accordance with the National Historic Preservation Act, as amended (16 U.S.C. 470 et seq.).

Estimated Burden Statement: Public reporting burden for this form is estimated to average 18.1 hours per response including time for reviewing instructions, gathering and maintaining data, and completing and reviewing the form. Direct comments regarding this burden estimate or any aspect of this form to the Chief, Administrative Services Division, National Park Service, P.O. Box 37127, Washington, DC 20013-7127; and the Office of Management and Budget, Paperwork Reductions Projects (1024-0018), Washington, DC 20503.

United States Department of the Interior
National Park Service
NATIONAL REGISTER OF HISTORIC PLACES
CONTINUATION SHEET

PROTECTION OF THE FLAG MONUMENT
BRADFORD COUNTY, PA

Section number 7, Page 1

Narrative Description

The *Protection of the Flag Monument* is located at 715 South Main Street (Pennsylvania Route 199) in the southern section of the City of Athens, Bradford County, Pennsylvania. The monument is situated in a public park--known as the "Academy Lot"--which was transferred to the ownership of the Borough of Athens before 1972. In 1902, at the time of the completion of the monument, this was the site of the Athens Academy; the lot had been home to the local public school since 1814. The Academy building was removed in 1925 and six smaller commemorative features, including a flag pole and a state historical marker, are now found on this property. These other objects do not reflect the same level of artistic achievement seen in the Monument and none were erected within the period of significance. [See List of Features, attached.] Also on the site are two picnic tables, a grill and a bench which are recent additions and are not related to the property's significance. These minor elements are not included in the resource count. The *Protection of the Flag Monument* retains integrity although its setting has been modified.

The *Protection of the Flag Monument* is set forward on its lot, occupying the center of the western half of the site, closest to South Main Street. The Academy once stood in the eastern section, behind the monument, in what is now a level grassed lawn. The lot stretches from South Main Street east to the banks of the Susquehanna River. A few blocks to the south is the historic site of short-lived Fort Sullivan, close to the confluence of the Chemung and Susquehanna rivers.

The "Academy Lot" is nearly level, with numerous mature trees. A concrete sidewalk follows the line of South Main Street in front of the monument and the other commemorative objects, and a brick walk extends east to the monument. Two commemorative stones with bronze plaques are found to each side of the brick walk, set back approximately 11 feet from the sidewalk. Also to the north is a state historical marker, positioned between the commemorative stones, and a flag pole, set back 45 feet from the sidewalk. The *Protection of the Flag Monument* is located over 50 feet east of the sidewalk and is surrounded by raised granite coping forming a 26-foot wide square with corner ornaments. A four-foot wide brick path follows along

United States Department of the Interior
National Park Service
NATIONAL REGISTER OF HISTORIC PLACES
CONTINUATION SHEET

PROTECTION OF THE FLAG MONUMENT
BRADFORD COUNTY, PA

Section number 7, Page 2

the edge of the coping. At the center of the coping square is a granite pedestal topped by a sculpture group of bronze. Across South Main Street to the west is the Spalding Memorial Library/Tioga Point Museum. Residences border the park to the north and south, while the Chemung River lies further to the west. The nominated parcel contains approximately one acre of land historically known as the "Academy Lot" and currently associated with the *Protection of the Flag Monument*.

The *Protection of the Flag Monument* is a classically inspired commemorative war memorial, illustrating the mature work of the architectural firm of McKim, Mead & White and their agent, Lewis C. Albro, and the artistry of the sculptor, George Thomas Brewster. The polished Stony Creek granite pedestal, base, and block, and the cast bronze sculpture of an adult soldier and a young drummer boy remain unchanged since their installation in 1902. The pedestal rests at the center of a slightly tapered unpolished granite block that rises just over one foot from the ground level and forms a 9'6" square. The pedestal is composed of four elements--a plinth, a molded base, a die and a cap--and is approximately nine feet in height. The unornamented plinth is 1'5" in height and 4'3" on each elevation. A nine-inch section of two torus moldings surrounding a scotia, reminiscent of the detailing seen on classical columns, rests atop the plinth. The moldings taper to 3'8" as they approach the die, which is the pedestal's largest section. Approximately six feet in height, the die tapers from 3'8" to approximately 3' square at its cap. At its widest point the die is chamfered; as it reaches the cap it is ornamented with a sunk fillet. On the west (front) face of the die is a bronze bas relief of entwined laurel wreaths below which is the dedication, also of bronze, in capital letters and centered on the face, reading "PRO PATRIA ET GLORIA/ERECTED TO THE MEMORY OF/OUR SOLDIERS/WHO FOUGHT IN DEFENSE OF/THE FLAG." The east (rear) face also has bronze bas relief lettering in the upper half of the die describing the benefactors: "PRESENTED TO THE TOWNSHIP/OF ATHENS, BRADFORD COUNTY/BY JOSEPH WHIPPLE/AND/CHARLOTTE SNELL/STICKLER/OF ORANGE, NEW JERSEY/MDCCCC." The cap is approximately six inches in height and is etched with a Greek fret pattern made by incorporating unpolished granite between the polished ornament. George T. Brewster, the sculptor, is quoted in the Athens Gazette on June 12, 1902, as saying: "The pedestal is simple, grandly simple, keeps its place as secondary to the group, but carries with it admirably the

United States Department of the Interior
National Park Service
NATIONAL REGISTER OF HISTORIC PLACES
CONTINUATION SHEET

PROTECTION OF THE FLAG MONUMENT
BRADFORD COUNTY, PA

Section number 7, Page 3

perfection of what the sculptor and designer have worked out together to produce."

The sculpture stands atop the pedestal and is approximately eight feet tall. It features two male figures: an adult soldier and a young drummer boy. The adult figure is outfitted in a uniform with a caped, double-breasted overcoat. He holds a rifle in his right hand with the barrel pointed downward; the butt of the rifle is partially concealed by the cape of his overcoat. The soldier's shirt sleeves are rolled at the cuff and his leggings are tucked into boots which are protected by spats. On his back he carries a satchel or pack. Around his head is a bandage or soft wrap; the soldier's hair curls over this bandage in several places. The drummer boy is clad in short leggings and a shirt with sleeves rolled past the elbow. He has no hat or coat and is barefoot. A loosely rolled flag with a broken wooden shaft rests on the boy's left shoulder, and is held by the boy's left hand, aided by the left hand of the soldier. A drum rests behind boy's left side, supported by a wide waist belt and a buckled strap which crosses the boy's chest from upper right to lower left. The boy's right arm is outstretched and he is pointing straight ahead. An article in the Providence Journal on May 25, 1902, written while the sculpture was undergoing final preparations at the Gorham Manufacturing Co. facility in that city, aptly described the interrelationship of the two figures:

"The boy rests against the soldier, the youthful head close up to the broad chest, held there by a powerful arm about the childish neck, and points earnestly ahead. The strong warrior, his feet encased in deeply wrinkled up leggins, suggestive of rugged power, and placed a little distance apart, his determined jaw tightly set, and the muscles of his barred neck standing out terse and bold, is coolly and thoughtfully following the direction in which his little comrade is pointing."

Surrounding the monument on all four sides, set 6'11" from the edge of the granite block beneath the pedestal, is granite coping with polished granite globes at the four corners forming a 26' square. The coping is 1'2" in width and three sections of 7'7" are used on each side, along with mortar-free joints, to stretch 23 feet. The upper face of all the coping undulates slightly for decorative and practical reasons. The

United States Department of the Interior
National Park Service
NATIONAL REGISTER OF HISTORIC PLACES
CONTINUATION SHEET

PROTECTION OF THE FLAG MONUMENT
BRADFORD COUNTY, PA

Section number 7, Page 4

corner globes are set on 1'6"-square unpolished granite plinths and have a diameter of approximately 1'4". At the "equator" of each polished granite globe is a three-inch raised decorative band. Under the pedestal base and each of the four corner globes is a subterranean foundation of 6'4" and 4'6" respectively.

The original monument design called for gravel paths on the outer edges of all sides of the coping and a path back to the front sidewalk; an additional section extended east to the Academy building. In the twentieth century, these gravel paths were replaced by macadam walks and the path to the east was removed after the Academy was demolished. The plinths under the globes and the coping were originally set up approximately eight inches from ground level, but over time this distance has diminished and, during the repaving done in 1999 by the National Guard Reserve, a four-foot-wide brick walk was laid up nearly to the top of the coping and plinth. The ground level around the walk was recontoured, and a new brick walk, 5'6" wide, was added on the west (front) from the coping edge to the base under the pedestal. With these exceptions, the walks maintain their originally designated courses.

To the north of the brick walk leading to the monument are (a) the commemorative boulder for Stephen Foster and the Athens Academy and (b) the Teauga/Sullivan Expedition monument. A park bench and the state historical marker for Stephen Foster are positioned between these two memorials. To the east of these, but still north of the *Protection of Flag Monument*, the Police Benevolent Society flag pole. To the south of the brick walk are (a) the Vietnam memorial and (b) the Roll of Honor for those killed in the World Wars and the Korean Conflict. A row of four mature dogwood trees are placed behind the stone memorials, two to each side of the brick walk. A line of old maple trees are found at the southern edge of the lot, and several other maple trees, as well as two linden trees and a clump of locusts, dot the eastern half of the site. Two large evergreen trees are found in this section as well. A cement block outdoor barbecue grill and two large fixed picnic tables are positioned near the easternmost edge of the property.

United States Department of the Interior
National Park Service
NATIONAL REGISTER OF HISTORIC PLACES
CONTINUATION SHEET

PROTECTION OF THE FLAG MONUMENT
BRADFORD COUNTY, PA

Section number 7, Page 5

The *Protection of the Flag Monument* retains integrity of location, design, workmanship, materials, feeling and association. Although the Academy building has been lost and additional features have been added to the site, the monument is still the focal point of a commemorative setting, serving as a symbol of the patriotic contributions of successive generations of Bradford County residents.

United States Department of the Interior
National Park Service
NATIONAL REGISTER OF HISTORIC PLACES
CONTINUATION SHEET

PROTECTION OF THE FLAG MONUMENT
BRADFORD COUNTY, PA

Section number 7, Page 6

LIST OF OTHER COMMEMORATIVE FEATURES ON THIS SITE:

<u>NAME OF FEATURE</u>	<u>DESCRIPTION</u>	<u>DATE OF INSTALLATION</u>
Flag Pole	Metal set in concrete base; approximately 32' in height; inscription in concrete	May 1955, by the Athens Police Benevolent Society
"TEAOGA"/Sullivan Expedition Marker	Rough granite stele: 3'8"x8'6"x1'2" Hipped concrete base: 7' x 3' Bronze plaque: 2'6"W x 4'H with map and inscription	Moved to this site in 1999; originally erected in 1929 by Pennsylvania Historical Commission and Tioga Point Chapter of the DAR; location was further south on Main St.
Stephen Foster/ Old Athens Academy	Irregular stone boulder: approx. 4'x4' Bronze plaque: 2'6"W x 1'6"H	1941; by the Tioga Point Museum
Stephen Foster Historical Marker	Cast iron and other metals; post: 4'2"H sign: 3'9"W x 3'H	Ca. 1935; erected by Pennsylvania Historical and Museum Commission

United States Department of the Interior
National Park Service
NATIONAL REGISTER OF HISTORIC PLACES
CONTINUATION SHEET

PROTECTION OF THE FLAG MONUMENT
BRADFORD COUNTY, PA

Section number 7, Page 7

LIST OF OTHER COMMEMORATIVE FEATURES ON THIS SITE: (continued)

<u>NAME OF FEATURE</u>	<u>DESCRIPTION</u>	<u>DATE OF INSTALLATION</u>
Vietnam Memorial	Gray granite; polished face, all other rough faced; set in flat concrete stele: 5'H x 3'W x 11"D modern plaque: 2'W x 1'8-1/4"H concrete base: 2'8"D x 4'W	Ca. 1980; erected by Sons of American Legion Fort Sullivan Sqd. 246
Roll of Honor/ World War I and II and Korean Conflict Memorial	Gray granite; polished face; others rough-faced; set in flat concrete stele: 5'H x 3'W x 11"D modern plaque: 2'W x 1'8-1/4"H concrete base: 2'8"D x 4'7"W	Ca. 1960; erected by the Veterans of Foreign Wars Post

United States Department of the Interior
National Park Service
NATIONAL REGISTER OF HISTORIC PLACES
CONTINUATION SHEET

PROTECTION OF THE FLAG MONUMENT
BRADFORD COUNTY, PA

Section number 8, Page 1

Narrative Statement of Significance

The *Protection of the Flag Monument* is a classically inspired commemorative war memorial illustrating the mature work of the architectural firm of McKim, Mead & White and their agent, Lewis C. Albro, and the artistry of the sculptor, George Thomas Brewster. The monument is significant under National Register Criterion C for Art as a strong and singular local example of work of these nationally prominent architects and artists. Although the monument is commemorative in nature, it meets Criteria Consideration F in that it has attained its own historic significance as it is the only monument designed by McKim, Mead & White and sculpted by George Brewster in northern Pennsylvania. Furthermore, while originally dedicated to commemorate the service of Civil War veterans, the *Protection of the Flag Monument* has come to represent the patriotism and dedication of all soldiers. The period of significance, 1900-1902, is defined by the design and installation dates of the monument.

McKim, Mead & White began their joint practice in 1879, and by 1900, the year in which this monument was commissioned, the office was said to have had the largest number of employees in the world. Because of the volume of work, trusted members of the firm were assigned to handle specific projects; Lewis Colt Albro (1876-1924) was the project designer and administrator for the Athens monument. Albro would leave the firm around 1904 and gain his own notable reputation as a "specialist in the field of domestic architecture." (Withey, p. 12) The sculptor, George Thomas Brewster (1862-1943), also had a noteworthy career as an educator, at Rhode Island School of Design (1892-93) and at Cooper Union (1900-1933), and as an artist. Brewster's commissions include the crowning statue, *Independent Man*, on the Rhode Island State House in Providence, and a bust of Robert E. Lee (1923) in the colonnade at the Hall of Fame, designed by Stanford White in 1900, at New York University. The *Protection of the Flag Monument* was commissioned in 1900 by Joseph Whipple Stickler and his wife, Charlotte Snell Stickler, of Orange, New Jersey, and unveiled in June 1902. The monument serves as a visual and historical landmark for the community.

United States Department of the Interior
National Park Service
NATIONAL REGISTER OF HISTORIC PLACES
CONTINUATION SHEET

PROTECTION OF THE FLAG MONUMENT
BRADFORD COUNTY, PA

Section number 8, Page 2

Athens is a small borough set within the confines of the Chemung and Susquehanna rivers. Athens was first known as Tioga Point because of its prime location on a narrow stretch of land between the rivers. Tioga Point became a regional trading post after Mathias Hollenback established his business there in 1784. The village was incorporated as the Borough of Athens in 1831. The community grew when the North Branch Canal constructed a port and boat yard in Athens in 1854. In the nineteenth century the lumber industry, carriage manufacturing and a bridge company were among Athens' major enterprises. Athens and the nearby villages of Sayre and Waverly (New York) would be linked by an electric trolley system in 1894; eventually the three communities would spread out towards each other, confusing the political and historic boundaries of each entity.

The *Protection of the Flag Monument* is located on the east side of South Main Street in Athens, Pennsylvania. The lot on which the monument stands was part of the "Academy Lot," also known as the "public grounds." Historically the "Academy Lot" included parcels on both sides of South Main Street, but the land on the west side of the street was deeded to the Trustees of Athens Township in 1897 and is occupied by the Spalding Memorial Library/Tioga Point Museum (National Register listed). The Academy building, no longer extant, was positioned on the eastern half of the remaining lot.

The monument was a gift of Joseph Whipple Stickler and his wife, Charlotte Snell Stickler. While Mr. Stickler was said to be a merchant engaged in business in Orange, most of his wealth came from his father who had owned property in New York City near the Stock Exchange. Mrs. Stickler had grown up in the Athens area and attended the Academy; as the daughter of Capt. John Snell, she was a direct descendant of Major Jacob Snell, an early settler of the area. The Sticklers were known as philanthropists and prominent citizens in the Orange, New Jersey area. The Sticklers moved to Orange in the late 1850s, taking up residence on Centre (or Center) Street and developing several nearby properties on Central Avenue. Mrs. Stickler was involved in the Orange Orphan Society and the Women's Christian Temperance Union, while Mr. Stickler served as treasurer of the Orange Aid Association, working with the poor. During the Civil War, Mrs. Stickler donated "all of the material that the women in the various churches in Orange

United States Department of the Interior
National Park Service
NATIONAL REGISTER OF HISTORIC PLACES
CONTINUATION SHEET

PROTECTION OF THE FLAG MONUMENT
BRADFORD COUNTY, PA

Section number 8, Page 3

needed for the making of garments for the Union soldiers."
(*New York Times*, February 9, 1901.)

The death of the Sticklers' only son, Dr. Joseph William Stickler, in May of 1899, provided further impetus for the family's generosity. Dr. Stickler was a noted physician and surgeon and had worked on bovine tuberculosis and on developing a vaccine for consumption. Dr. Stickler had served on the boards of the Orange Public Library and the Young Men's Christian Association. His unexpected death led the Sticklers to make a gift in June 1899 of over \$100,000 to build a new Orange Public Library in their son's honor. McKim, Mead & White served as architects on this commission, in association with Lewis C. Albro. In February of 1900 the Sticklers donated \$40,000 toward the construction of a new YMCA building in Orange; McKim, Mead & White also received that commission.

The Sticklers' association with McKim, Mead & White on these projects probably led them to contract with the firm for the placement of the monument in Athens. On October 23, 1900, Mr. Stickler wrote authorizing their work on the monument project. By November drawings were prepared by Lewis C. Albro as an associate of the firm. Mrs. Stickler passed away in February 1901, but in October of 1901, her daughter, Mrs. Frank Vanderpoel of Orange, wrote to request that McKim, Mead & White proceed on the Athens monument. Norcross Bros. of New York City cut the Stony Creek granite and erected the monument on its site in June of 1902, under the supervision of Lewis C. Albro. Major W. H. H. Gore, a prominent local man and Civil War veteran from Towanda, Pennsylvania, is said to have selected the location for the monument. The sculpture group, designed by George Thomas Brewster and cast by the Gorham Manufacturing Company in Providence, Rhode Island, was completed in May 1902 and set on its pedestal in June. Mrs. Vanderpoel attended the unveiling ceremonies on behalf of the Stickler family. Joseph Whipple Stickler, the benefactor, was ill and would pass away in January 1903.

McKim, Mead & White had numerous ties to Orange, New Jersey; the family of Charles Follen McKim (1847-1909) had moved to Llewellyn Park, Orange, in the 1860s. Some of McKim's first commissions in the 1870s were small "country homes"--residences in the Eastlake Style--in the Orange communities of Montclair and Montrose. In the 1890s, the firm of McKim, Mead

United States Department of the Interior
National Park Service
NATIONAL REGISTER OF HISTORIC PLACES
CONTINUATION SHEET

PROTECTION OF THE FLAG MONUMENT
BRADFORD COUNTY, PA

Section number 8, Page 4

& White was invited by local citizens to provide ideas for a new library; this would lead to their eventual employment in 1899 as architects for the Orange Public Library and, in 1900 for the Orange Young Men's Christian Association building.

McKim and his partner, Stanford White (1853-1906), worked with many sculptors, including Augustus Saint-Gaudens, Frederick MacMonnies, and Daniel Chester French, designing pedestals for at least fifty pieces of art. In the 1890s the firm was commissioned to provide "pylon bases" for MacMonnies' *The Horse Tamers*, at one of the entrances to Prospect Park in Brooklyn. Later that decade McKim designed a memorial setting in the Boston Common to enshrine the bas relief bronze prepared by Saint-Gaudens in honor of Robert Gould Shaw.

It was also during the 1890s that William Rutherford Mead (1846-1928), the third partner in the firm, was engaged in the design and construction of the Rhode Island State House. Coming on the heels of their most significant commission, the Boston Public Library (1887-95), work on the Rhode Island State House represented the continuing growth and influence of the firm. By the time that project concluded in 1904, McKim would be involved in the preparations for Pennsylvania Station in New York City. Although these large commissions are seen as the hallmarks of McKim, Mead & White, the firm was engaged in projects of all sizes, including mausolea, residences for people of all income levels, office buildings, stables, cottages, and hotels.

Mead's work on the Rhode Island State House certainly brought him in contact with George Thomas Brewster, the sculptor who designed the *Independent Man* which stands atop the State House dome. This sculpture was cast in 1899 and set in place in 1900, marking the first collaboration between McKim, Mead & White and Brewster. Trained at the Ecole des Beaux Arts in France, Brewster taught at the Rhode Island School of Design from 1892-93. Interestingly, Mead and his colleagues began their Rhode Island project in 1891, although construction was not underway until 1894. Brewster's work on the *Protection of the Flag Monument* appears to have occurred at a turning point in his career. In 1900 he began a thirty-year teaching career at Cooper Union in New York City, and in 1904 produced a relief sculpture of Augustus Saint-Gaudens now held by the Smithsonian Institution. Brewster sculpted colossal statues

United States Department of the Interior
National Park Service
NATIONAL REGISTER OF HISTORIC PLACES
CONTINUATION SHEET

PROTECTION OF THE FLAG MONUMENT
BRADFORD COUNTY, PA

Section number 8, Page 5

of Greek Drama and Greek Statesman for the cornice of the Brooklyn Institute Museum in 1907-09, and during the 1910s he was involved in several substantial commissions each year. From 1915-21 Brewster worked for the Vicksburg National Military Park in Mississippi creating bas relief bust-length portraits of distinguished soldiers of that battle. All of these commissions were cast by the Gorham Manufacturing Company, as were many of Brewster's early works, including the *Protection of the Flag Monument*.

Lewis Colt Albro, an architect on the staff of McKim, Mead & White, signed the drawings for the monument and supervised the final details of its erection in Athens. Albro had joined the firm ca. 1895 as a draftsman, but was rapidly promoted in recognition of his design skill. He worked closely with McKim during his nine years in that office, assisting on the Columbia University's Low Library (1895-98). Albro also handled numerous projects on his own, including the Orange Public Library and the townhouse for artist Charles Dana Gibson in Manhattan. After leaving McKim, Mead & White, Albro was in a partnership with residential designer Harrie T. Lindeberg from 1906 to 1914. This firm specialized in palatial homes for the wealthy, particularly on Long Island. Albro continued this line of work when he began his solo practice, designing homes for prominent people including George Arentz, Jr., (Rye, New York) and Ernest Fahnestock (Cold Springs, New York).

The dedication and unveiling of the *Protection of the Flag Monument* occurred on June 14, 1902. Civil War veterans from all across Bradford County and neighboring counties were invited to attend the ceremony, and were served lunch by the Athens community. A parade of local firemen began at 2:00 PM, incorporating the dignitaries and veterans as they approached the monument site. An "immense crowd," which packed the Academy Lot "from river to river," met the parade and watched the ceremony. [Athens Gazette, June 19, 1902] Presenting the monument to the community was Rev. Charles Townsend of Orange, New Jersey, the pastor of the Stickler family church, First Presbyterian. The Rev. Dr. Simpson of Athens M. E. Church provided an acceptance on behalf of the Borough, and Mr. Stickler's daughter, Mrs. Frank [Nannie] Vanderpoel, unveiled the monument for the crowds. Speeches and music filled out the rest of the program, with a presentation address by

United States Department of the Interior
National Park Service
NATIONAL REGISTER OF HISTORIC PLACES
CONTINUATION SHEET

PROTECTION OF THE FLAG MONUMENT
BRADFORD COUNTY, PA

Section number 8, Page 6

General J. P. S. Gobin, Lieutenant Governor of Pennsylvania. An evening Camp Fire served as the occasion for additional music, speeches and patriotic fervor.

The *Protection of the Flag Monument* stands as a memorial to the heroism and dedication of all soldiers and as a record of the generous spirit of the Stickler family. The monument fully demonstrates the high artistic achievement of its architects and sculptor, whose responsibility it was to give patriotism a visible representation.

United States Department of the Interior
National Park Service
NATIONAL REGISTER OF HISTORIC PLACES
CONTINUATION SHEET

PROTECTION OF THE FLAG MONUMENT
BRADFORD COUNTY, PA

Section number 9, Page 1

Major Bibliographical References

Reference Books and Articles

- Adams, Herbert. "[Tribute to Charles McKim on behalf of] *The National Sculpture Society.*" Program for the Charles Follen McKim Memorial Meeting, American Institute of Architects. Washington, D.C.: The Corcoran Gallery of Art, December 15, 1909.
- Albro, Lewis Colt and Harrie T. Lindeberg. *Domestic Architecture.* New York: Privately published, 1912.
- Clark, Eleanor Sterling. *Orange, New Jersey: 1806-1956.* Orange, NJ: Orange Publishing Company, Inc., 1956.
- Clark, Eleanor Sterling. *The Orange Public Library: 1883-1958.* Orange, NJ: Orange Free Library, 1958.
- Falk, Peter Hastings, ed. *Who was Who in American Art.* Madison, CT: Sound View Press, 1985.
- Heverly, C. F. *Our Boys in Blue, Vol. I.* Towanda, PA: Bradford County Historical Society.
- "Highlights." *National Sculpture Review* 28, No. 1 (Spring 1979): 7.
- Meredith, Roy. *The Face of Robert E. Lee in Life and Legend.* New York: Charles Scribner's Sons, 1947.
- Moore, Charles. *The Life and Times of Charles Follen McKim.* Boston and New York: Houghton Mifflin Company, 1929.
- Murray, Louise Welles. *A History of Old Tioga Point and Early Athens, Pennsylvania.* Wilkes-Barre, PA: The Raeder Press, 1908.
- National Cyclopaedia of American Biography, Vol. VII.* New York: James T. White & Co., 1897.
- Reed, Henry Hope and H. Stafford Bryant, Jr., eds. *Monograph of the Work of McKim, Mead & White, 1879-1915: Student's Edition.* New York: Architectural Book Pub. Co., 1981.

United States Department of the Interior
National Park Service
NATIONAL REGISTER OF HISTORIC PLACES
CONTINUATION SHEET

PROTECTION OF THE FLAG MONUMENT
BRADFORD COUNTY, PA

Section number 9, Page 2

Reference Books and Articles (continued)

- Roth, Leland M. *The Architecture of McKim, Mead & White: 1870-1920, A Building List*. New York: Garland Publishing, Inc., 1978.
- Roth, Leland M. *McKim, Mead & White, Architects*. New York: Harper & Row, 1983.
- Sturgis, Russell. "The Works of McKim, Mead & White." *The Architectural Record*, May 1895.
- Who's Who in American Art, Volume III, 1940-41*. Washington, D.C.: The American Federation of Arts, 1940.
- Wilson, Richard Guy. *McKim, Mead & White, Architects*. New York: Rizzoli International Publications, Inc., 1983.
- Wilson, Richard Guy. "McKim's Country House Commissions." *Winterthur Portfolio* 14, No. 3 (Autumn 1979): 235-268.
- Withey, Henry F. *Biographical Dictionary of American Architects, Deceased*. Los Angeles: New Age Publishing Co., 1956.

Newspaper Articles

- New York Times*, August 8, 1896, page 4. Marriage of Dr. Joseph W. Stickler.
- New York Daily Tribune*, May 19, 1899, Part II, page 4. Obituary of Dr. Joseph W. Stickler.
- New York Daily Tribune*, June 16, 1899, page 11. Announcement of gift to Orange Library in honor of Dr. Joseph W. Stickler.
- New York Times*, February 13, 1900, page 1. Announcement of Stickler Memorial Gifts.
- New York Times*, February 9, 1901, page 9. Obituary of Mrs. Joseph W. (Charlotte Snell) Stickler.

United States Department of the Interior
National Park Service
NATIONAL REGISTER OF HISTORIC PLACES
CONTINUATION SHEET

PROTECTION OF THE FLAG MONUMENT
BRADFORD COUNTY, PA

Section number 9, Page 3

Newspaper Articles (continued)

Providence Journal, May 25, 1902. Article on the final preparations of the sculpture at the Gorham Manufacturing Co. facility.

Athens Gazette, June 19, 1902. Report on the dedication of the Monument.

New York Daily Tribune, January 20, 1903, page 9. Obituary of Joseph W. Stickler.

New York Times, January 20, 1903, page 20. Obituary of Joseph W. Stickler.

New York Times, March 3, 1924, page 17. Obituary of Lewis Colt Albro.

On-Line Resources

<http://www.rlin.state.ri.us/studteaguide/studhand.html>
Information on the Rhode Island State House

<http://www.bcc.cuny.edu/halloffame/halloffamegala.html>
Information on the Bronx Community College Hall of Fame for Great Americans

<http://www.tiac.net/users/tangaroa/tc5.html>
Information on the Gorham Manufacturing Company

<http://www.cyber-quest.com/Athens/History.html>
Information on the Borough of Athens, PA, History

<http://www.siris.si.edu/webpac-bin/wgbroker>
Smithsonian American Art Museum Inventories of American Painting and Sculpture database

partme

United States Department of the Interior
National Park Service
NATIONAL REGISTER OF HISTORIC PLACES
CONTINUATION SHEET

PROTECTION OF THE FLAG MONUMENT
BRADFORD COUNTY, PA

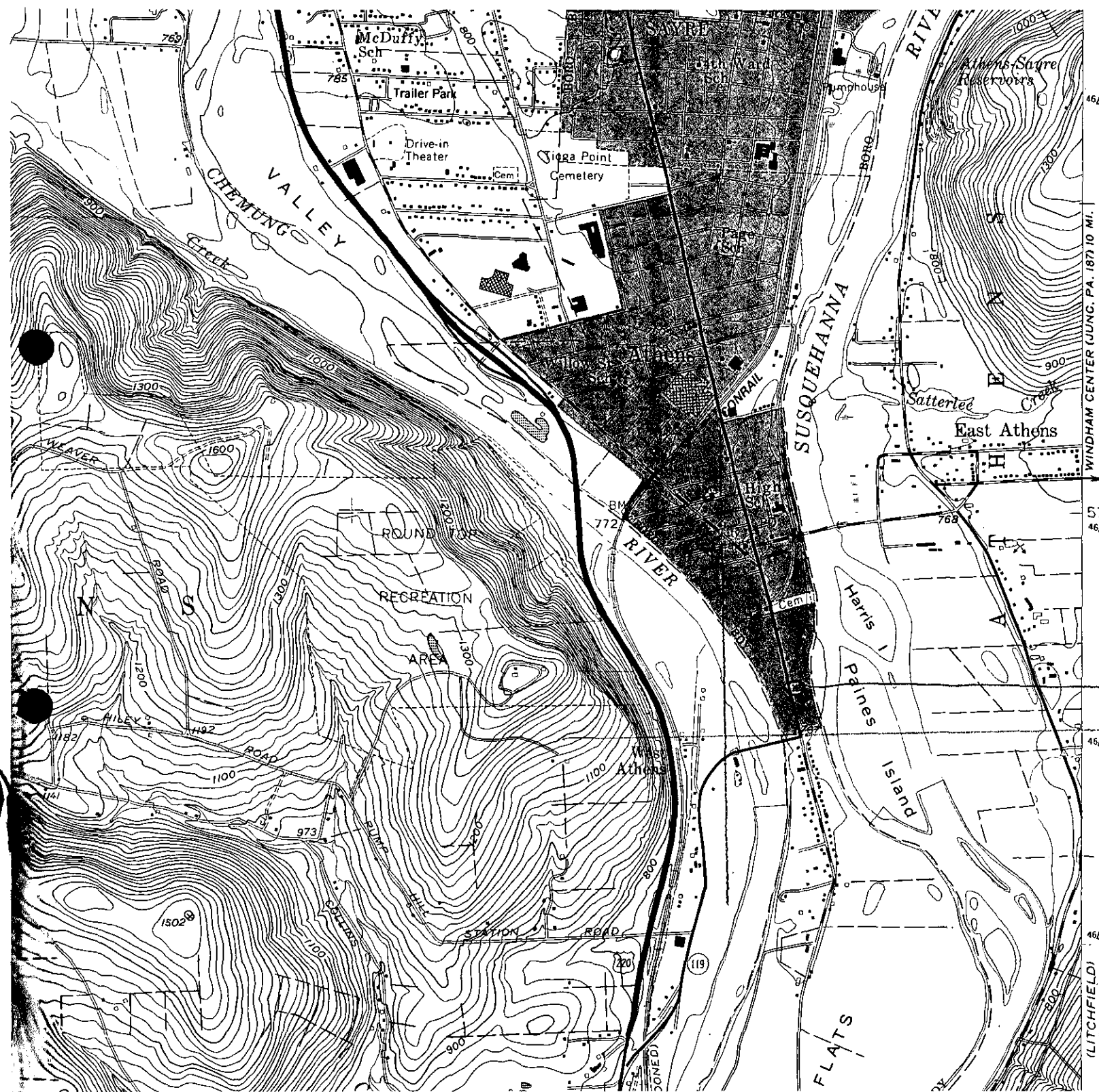
Section number 10, Page 1

Verbal Boundary Description

The boundary includes the approximately one acre rectangular parcel of land on which the *Protection of the Flag Monument* is located.

Boundary Justification

The boundary of the nominated property is drawn to encompass the full extent of its city lot, both historically and as currently associated with the *Protection of the Flag Monument*. The lot, now used as a park, is the original setting for the monument and is historically associated with it. Lands not historically associated with the monument are excluded.



WINDHAM CENTER (UNCL. PA. 187.10 MI.)
 4648
 4646
 4645
 4644
 (LITCHFIELD) 5767 IV NW

Protection of the Flag
 Monument
 Bradford Co, PA

UTMs
 Zone: 18
 E 374320
 N 4645220
 Sayre Quad