

**United States Department of the Interior
National Park Service**

**National Register of Historic Places
Continuation Sheet**

Nesquehoning High School
Carbon County, PA

Section number 10 Page 1

Verbal Boundary Description

The boundaries of the nominated property, Nesquehoning High School, are defined as follows. Beginning at a point, said point being the intersection of the north line of Catawissa Street and the west line of Almond Street; thence north along west line of Almond Street 200'-0" to a point; thence west along south line of Mill Street 120'-0" to a point; thence south 200'-0" along a line parallel to the defined Almond street boundary to a point; thence east 120'-0" along the north line of Catawissa Street to the point of beginning. The site, Carbon County, PA, Permanent Parcel Number 105B-41-G16 consists of .55 acres.

Boundary Justification

The nominated property has remained unchanged in terms of size and building coverage since construction of Nesquehoning High School concluded in 1919.

**United States Department of the Interior
National Park Service**

**National Register of Historic Places
Continuation Sheet**

Nesquehoning High School
Carbon County, PA

Section number Photographs Page 1

The information for items three (3) through five (5) is the same for all photographs

Photo 1

3. Christine Ussler
4. Winter 2000
5. Artefact, Inc.
26-28 East Third Street
Bethlehem, PA 18015
6. View of south (main) façade of Nesquehoning High School looking north

Photo 2

6. View from circular entryway showing stair, grade change and former theatre to the west, looking west.

Photo 3

6. View of east façade, looking northwest.

Photo 4

6. View of east and north facades, looking southwest.

Photo 5

6. View of west façade, looking south.

Photo 6

6. View of west façade, looking north from sidewalk of Catawissa Street.

Photo 7

6. Typical secondary exterior / exit door ensemble, looking west.

Photo 8

6. View of entry foyer, looking north.

Photo 9

6. View of entry foyer / interior of main entrance, looking south.

Photo 10

6. View of former auditorium space and proscenium arch, looking east.

**United States Department of the Interior
National Park Service**

**National Register of Historic Places
Continuation Sheet**

Nesquehoning High School
Carbon County, PA

Section number Photographs Page 2

Photo 11

6. View of former auditorium space with retained second level balcony railing, looking southwest.

Photo 12

6. View of typical hallway doorway ensemble and paneled fire door set back, looking southeast.

Photo 13

6. View of restored stairway and railing, looking west.

Photo 14

6. View of typical hallway looking south.

Photo 15

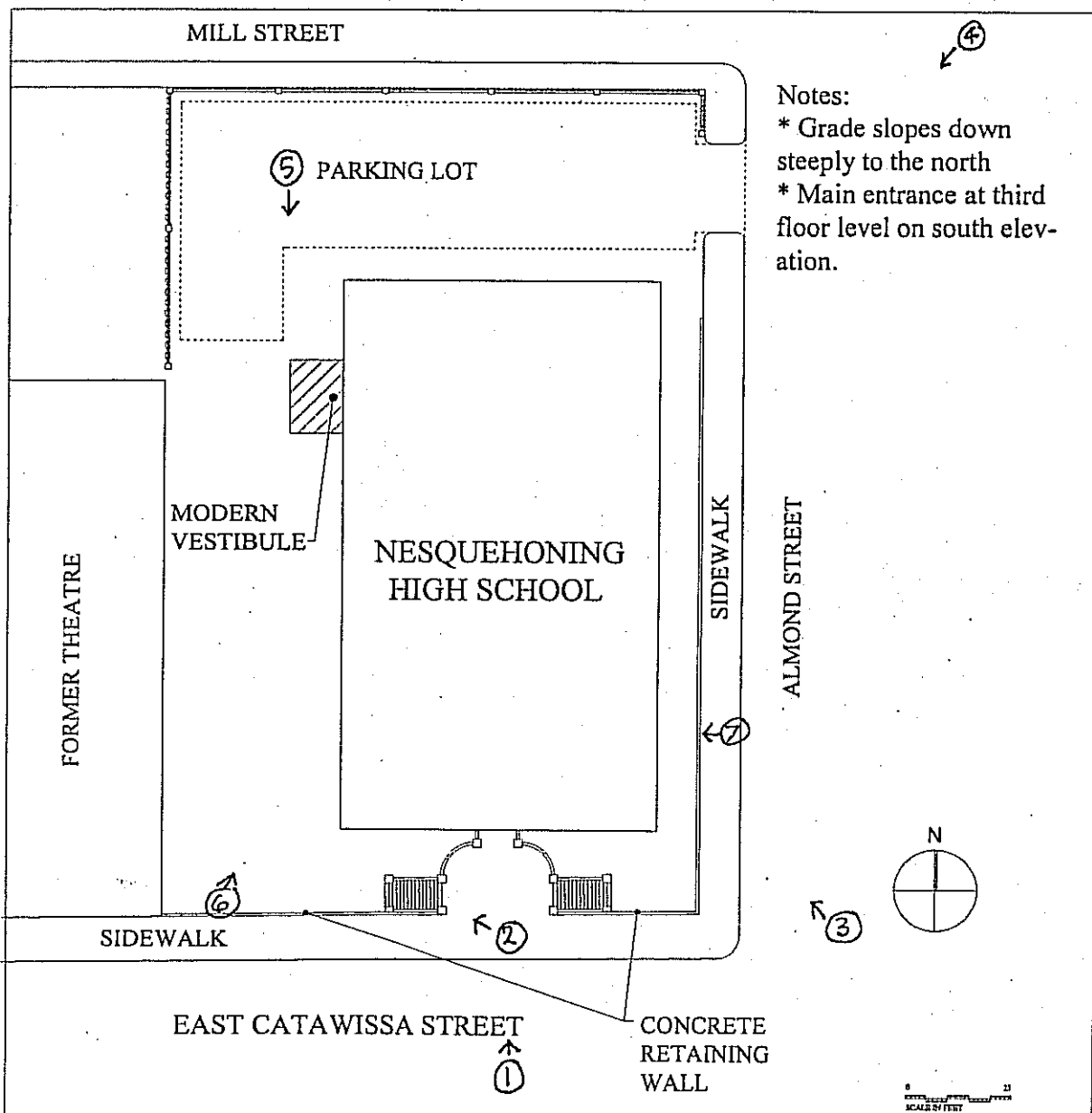
6. View of typical replacement window from the interior, looking southeast.

United States Department of the Interior
National Park Service

National Register of Historic Places Continuation Sheet

Section number Sketch Map Page 1

Nesquehoning High School
Carbon County, PA



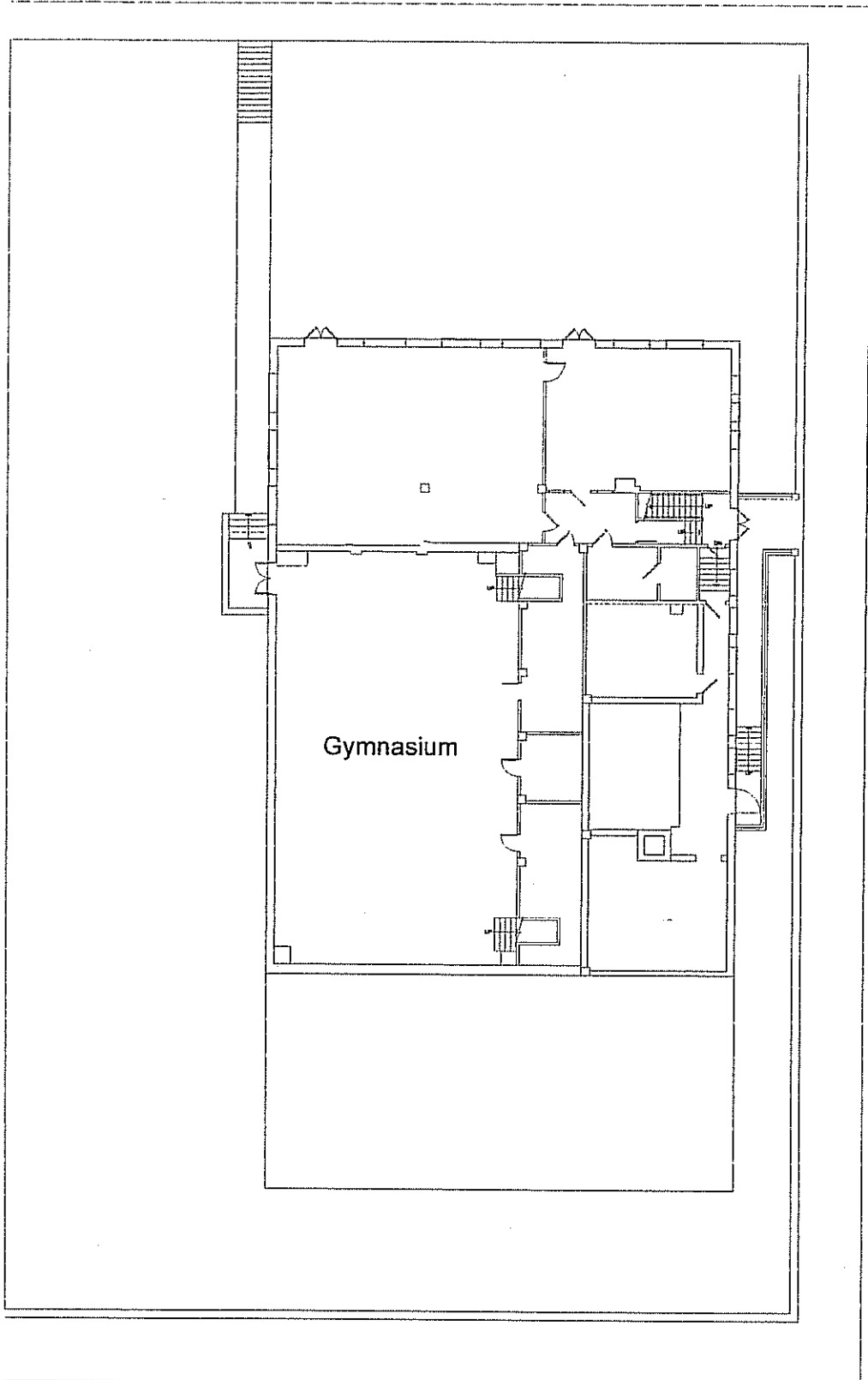
Notes:
 * Grade slopes down steeply to the north
 * Main entrance at third floor level on south elevation.

SITE PLAN: NESQUEHONING HIGH SCHOOL
 NESQUEHONING CARBON COUNTY, PA

MILL STREET

ALMOND STREET

FORMER THEATER



CATAWISSA STREET

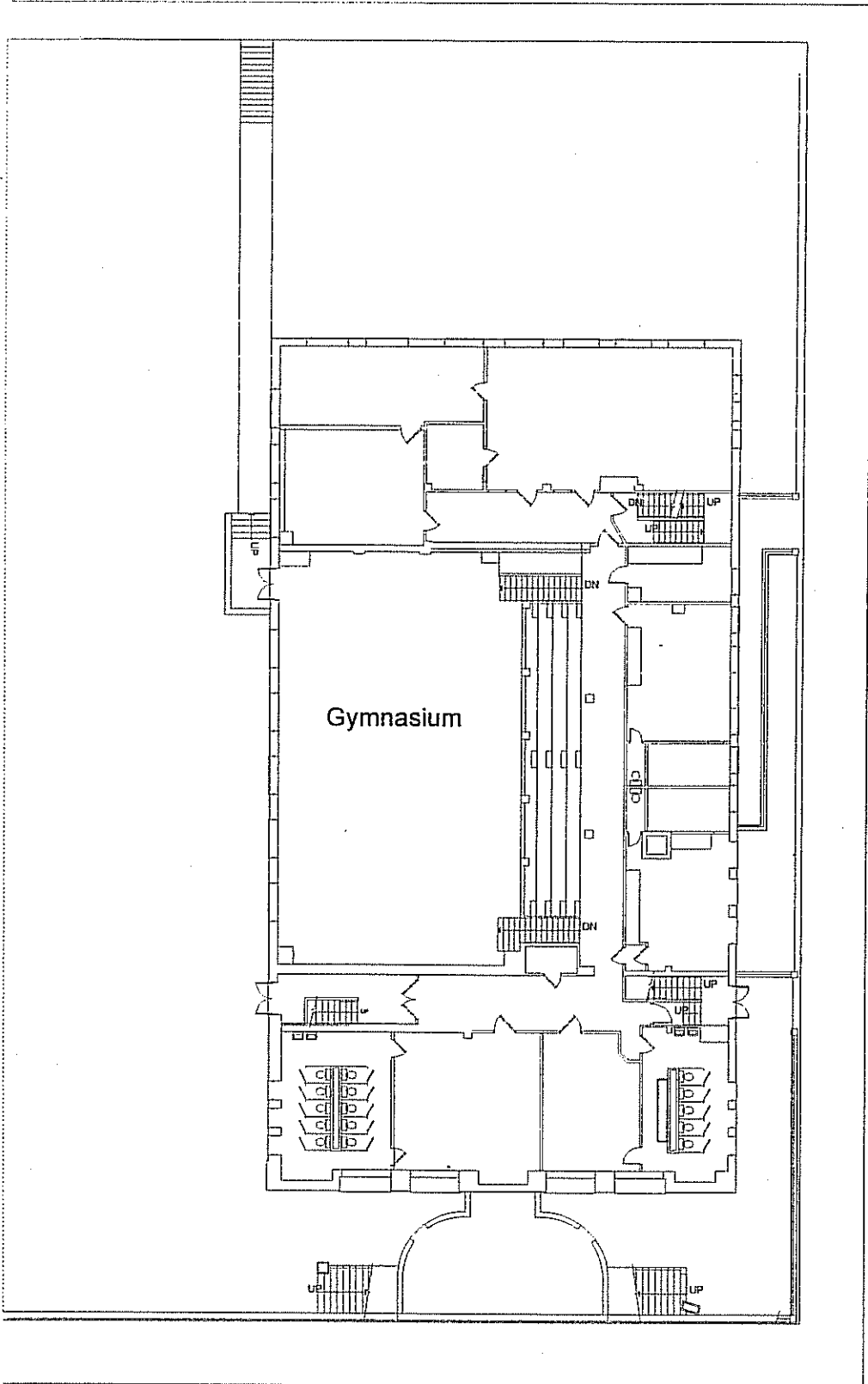
① NESQUEHINING HIGH SCHOOL
ORIGINAL BASEMENT PLAN

CARLSON COUNTY, PA



MILL STREET

MILL STREET



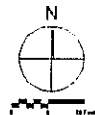
FORMER THEATER

ALMOND STREET

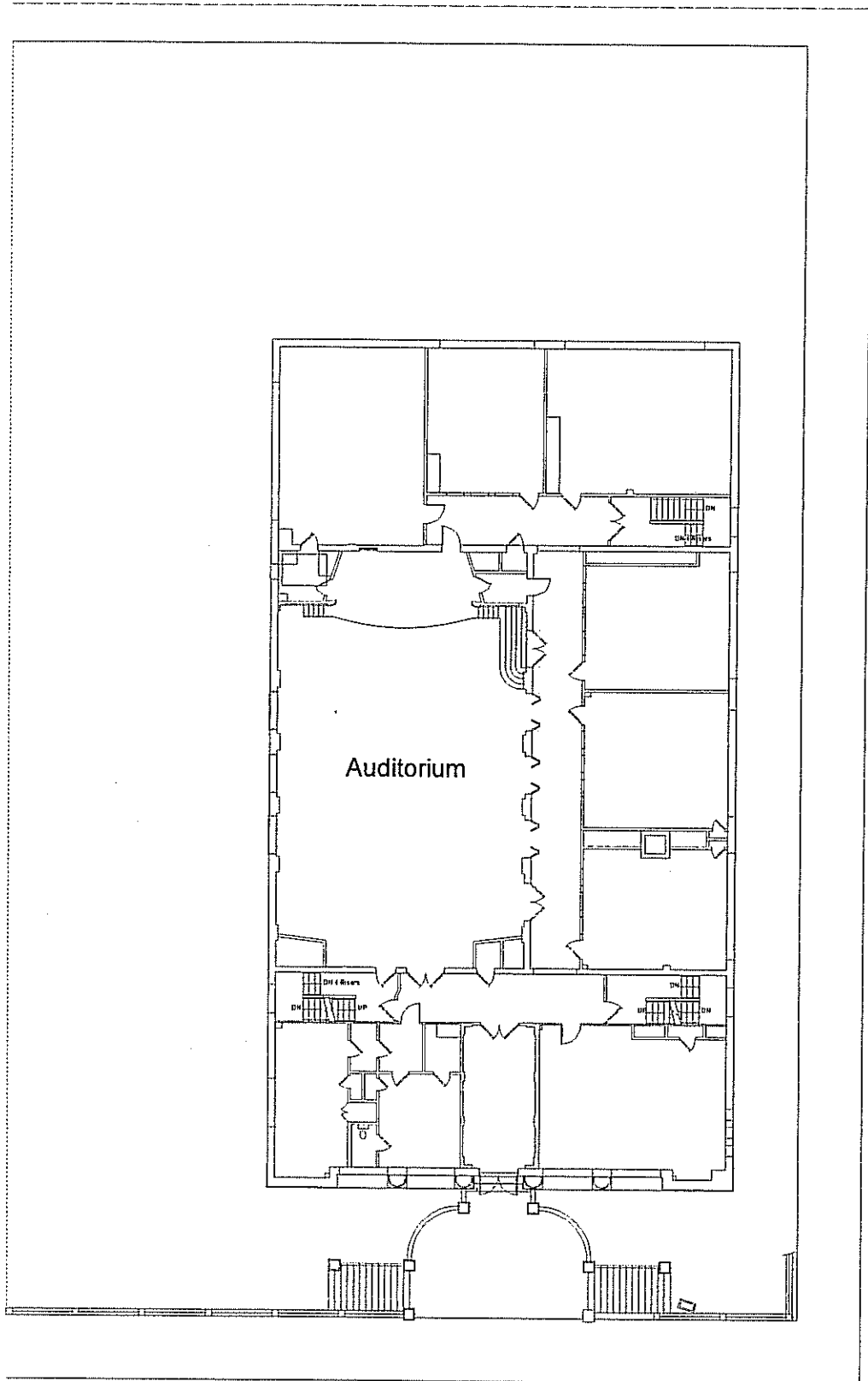
CATAWISSA STREET

① NESQUEHINING HIGH SCHOOL
ORIGINAL FIRST FLOOR PLAN

CARLISLE COUNTY, PA



MILL STREET



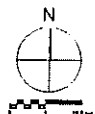
ALMOND STREET

FORMER THEATER

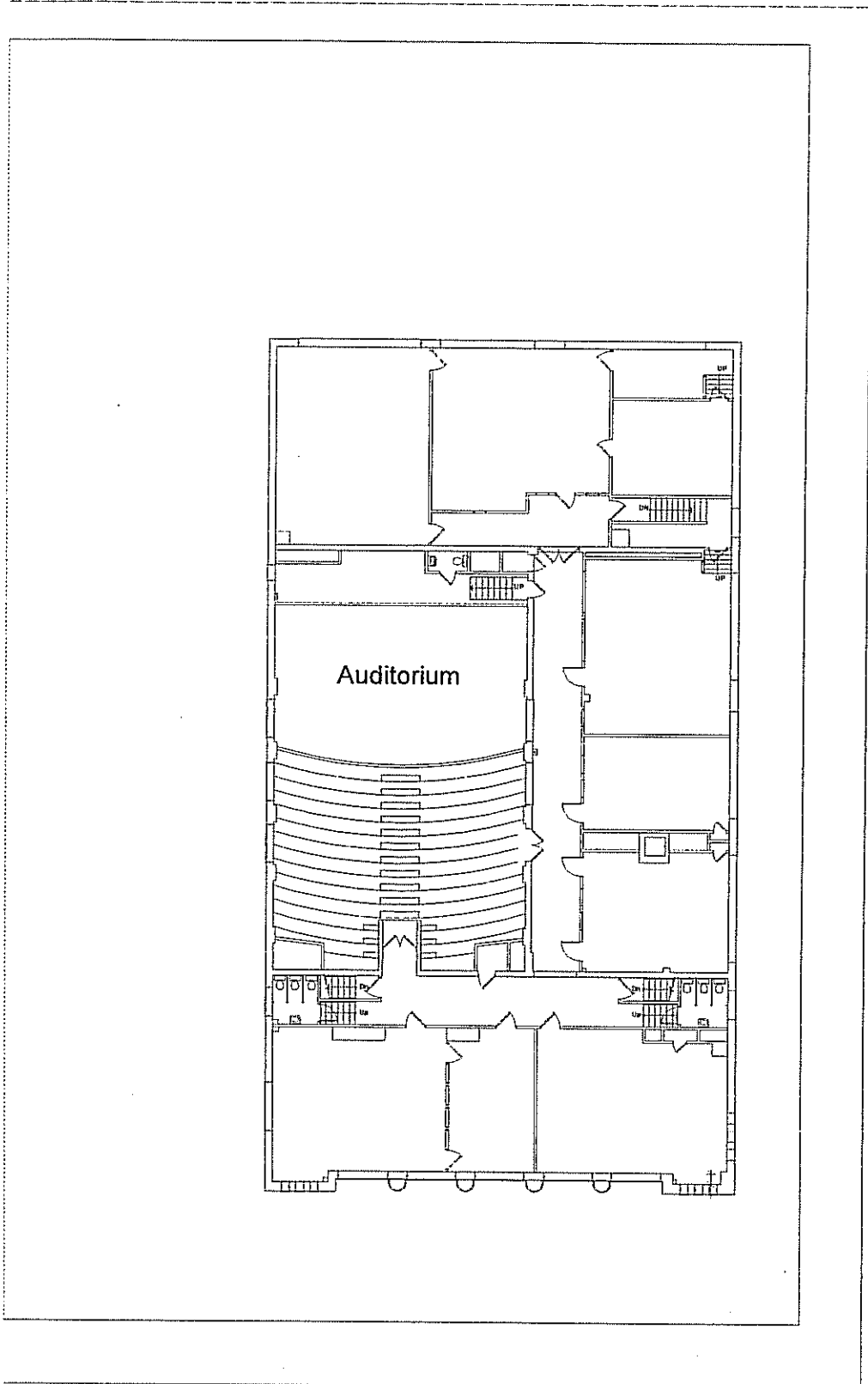
CATAWISSA STREET

② NESQUEHINING HIGH SCHOOL
ORIGINAL SECOND FLOOR PLAN

CARBON COUNTY, PA



MILL STREET



FORMER THEATER

ALMOND STREET

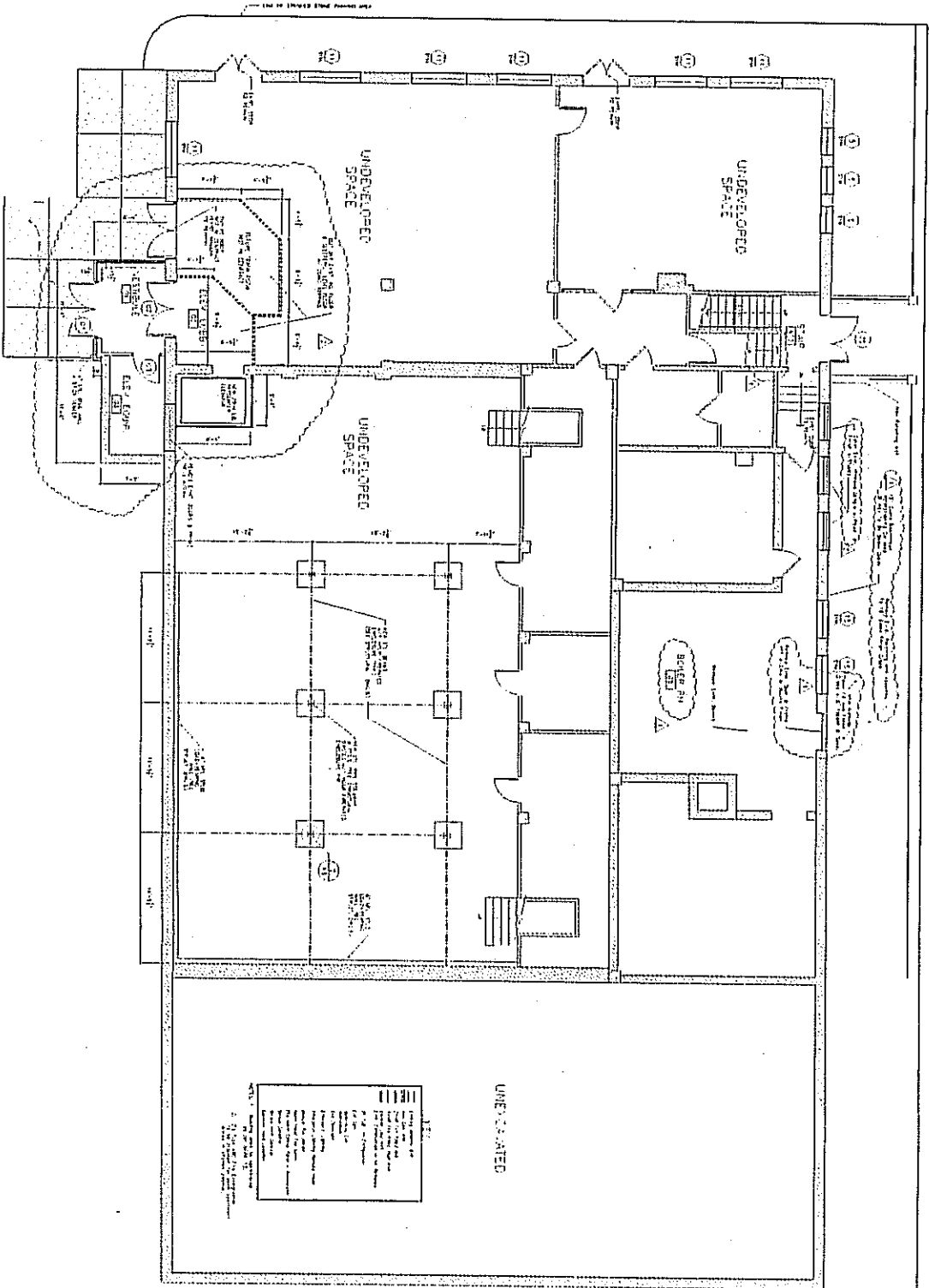
CATAWISSA STREET

③ NESQUEHINING HIGH SCHOOL
ORIGINAL THIRD FLOOR PLAN

CARBON COUNTY, PA



BASEMENT PLAN



NESQUEHONING HIGH SCHOOL
 NESQUEHONING
 CARBON COUNTY, PA

ALPOND STREET

4

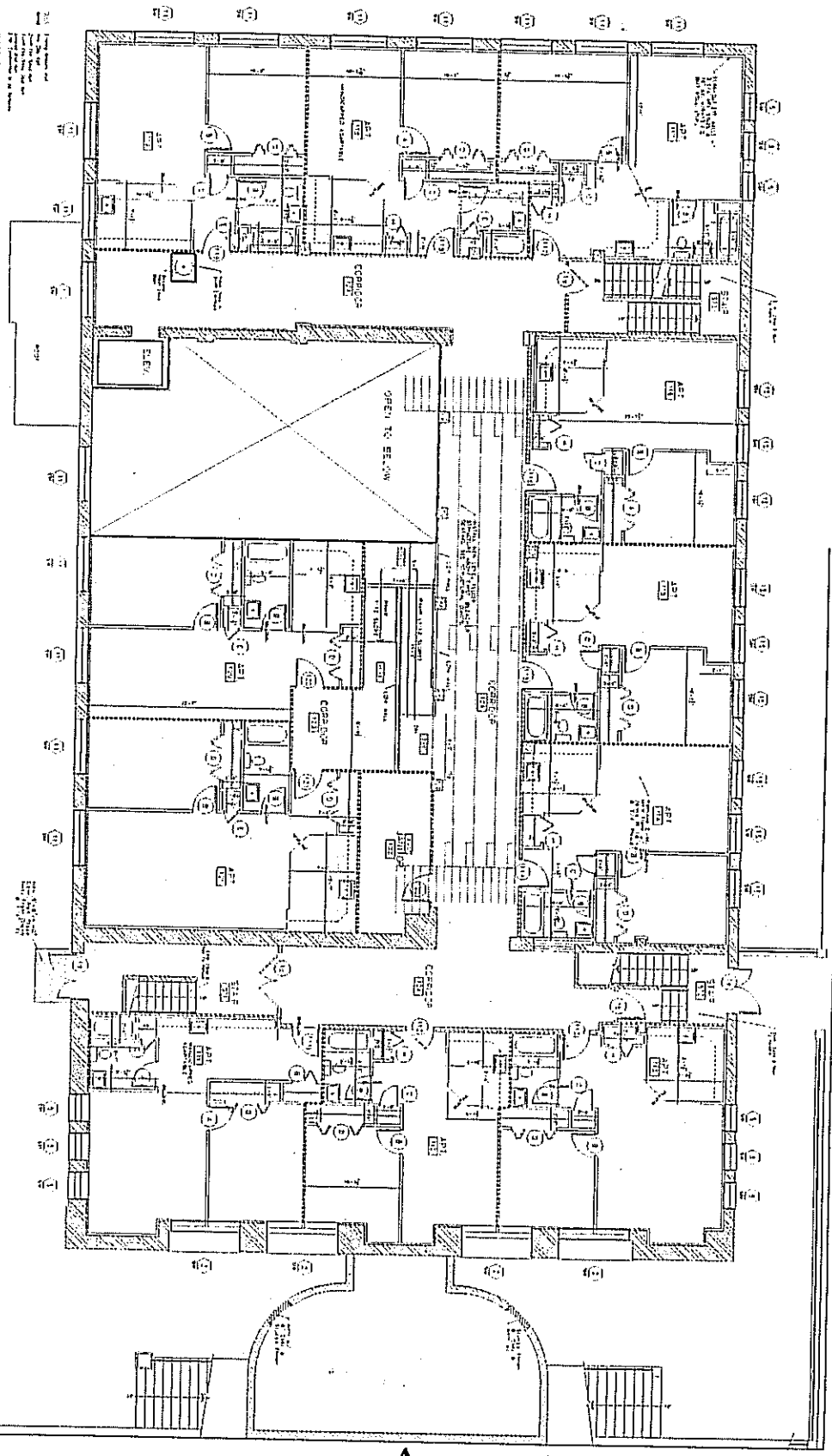
7

3

5

6

1



1. All work to be done in accordance with the specifications and conditions of contract.

2. The contractor shall be responsible for obtaining all necessary permits and licenses.

3. The contractor shall maintain access to all existing utilities and structures.

4. The contractor shall protect all existing work and materials.

5. The contractor shall maintain safety at all times.

6. The contractor shall clean up after each day's work.

7. The contractor shall provide a copy of the as-built drawings to the owner.

8. The contractor shall be responsible for the removal and disposal of all waste materials.

9. The contractor shall be responsible for the repair of any damage to existing work.

10. The contractor shall be responsible for the payment of all taxes and fees.

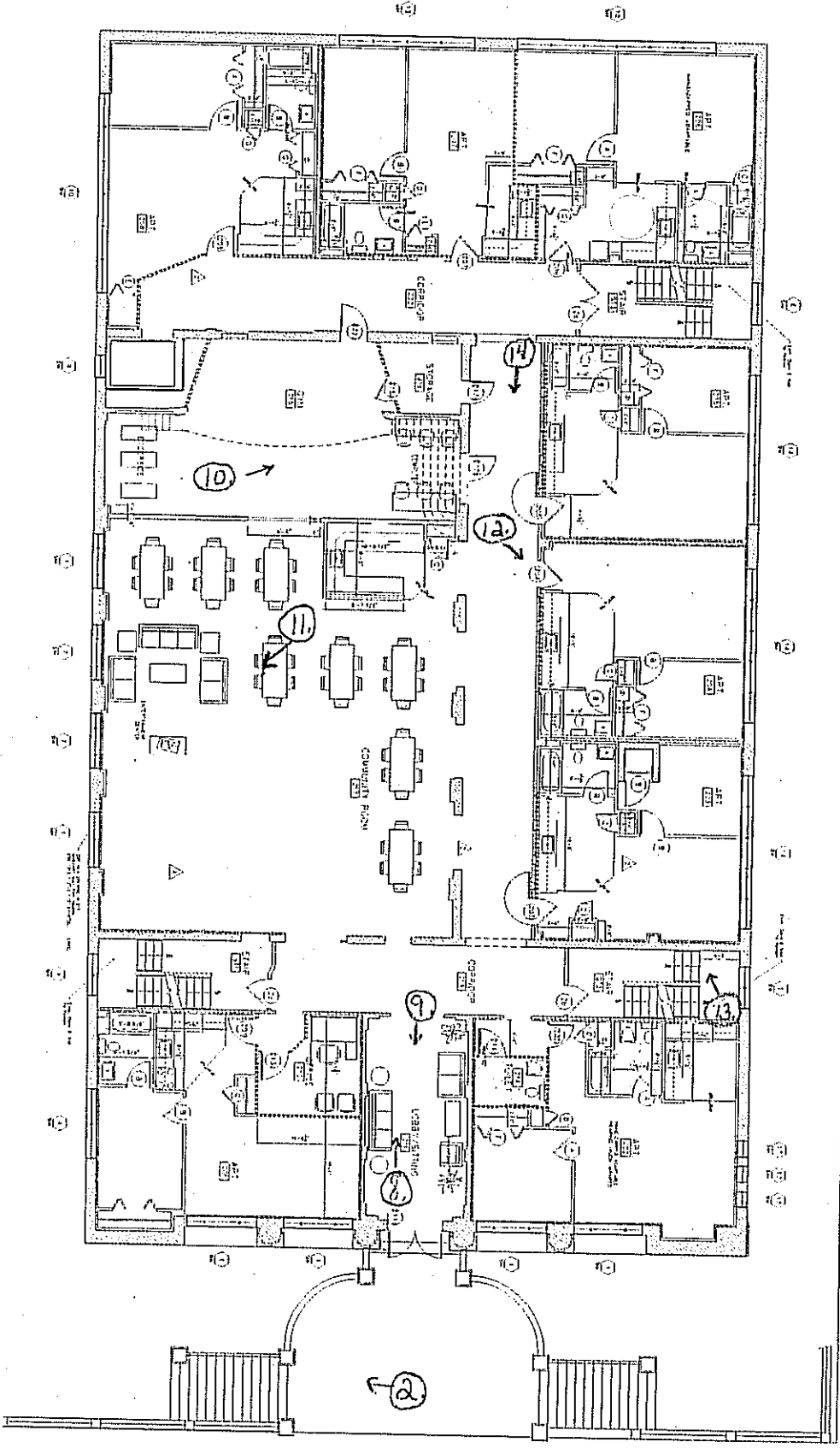
11. The contractor shall be responsible for the insurance of all workmen and materials.

12. The contractor shall be responsible for the completion of the work within the specified time frame.

FIRST FLOOR PLAN

NESQUEHONING HIGH SCHOOL
 NESQUEHONING
 CARBON COUNTY, PA

ALPINE STREET



WEST CATAWISSA STREET

SECOND FLOOR PLAN

NESSQUEHONING HIGH SCHOOL
NESSQUEHONING
CARBON COUNTY, PA

THIRD FLOOR PLAN

