

(8-86)

United States Department of the Interior  
National Park Service

**NATIONAL REGISTER OF HISTORIC PLACES  
CONTINUATION SHEET**

Section 11 Page 1

Williams, Ellis House  
name of property  
Delaware County, PA  
county and State

---

**Photographs**

All photographs enclosed with this nomination were taken in 2002 by Robert J. Wise, Jr.  
Original negatives are located at Wise Preservation Planning, Paoli, Pa.

- 1 Overview of farmstead, facing NE
- 2 House – main façade, facing NW
- 3 House – west end, facing E
- 4 House – rear elevation, facing SE
- 5 House – rear elevation, showing powder room addition, facing SW
- 6 Parlor in c. 1750 section, facing NE
- 7 Parlor in c. 1750 section, showing the partition wall, facing NW
- 8 Former kitchen / dining room, facing NW
- 9 Living Room in c. 1790 addition, facing NW
- 10 Second floor bedroom (NE room), facing NW
- 11 Second floor hallway, facing E
- 12 Attic in c. 1750 section, facing E (not shown on site plan)
- 13 Hearth supports in basement, c. 1790 addition, facing NW (not shown on site plan)
- 14 Workshop – main façade, facing N
- 15 Workshop – rear façade, facing SW
- 16 Workshop – rear façade, facing SE
- 17 Workshop – finished room, facing NW (not shown on site plan)

United States Department of the Interior  
National Park Service

National Register of Historic Places  
Continuation Sheet

Williams, Ellis House  
name of property  
Chester County, PA  
county and state

Additional Documentation, page 1

---

---

**Maps**

- 1 USGS Quad Map
- 2 Tax Map (2003)
- 3 Witmer Atlas (1873)
- 4 Breous Atlas (1883)
- 5 Mueller Atlas (1912)
- 6 Sketch Map

**Floorplans**

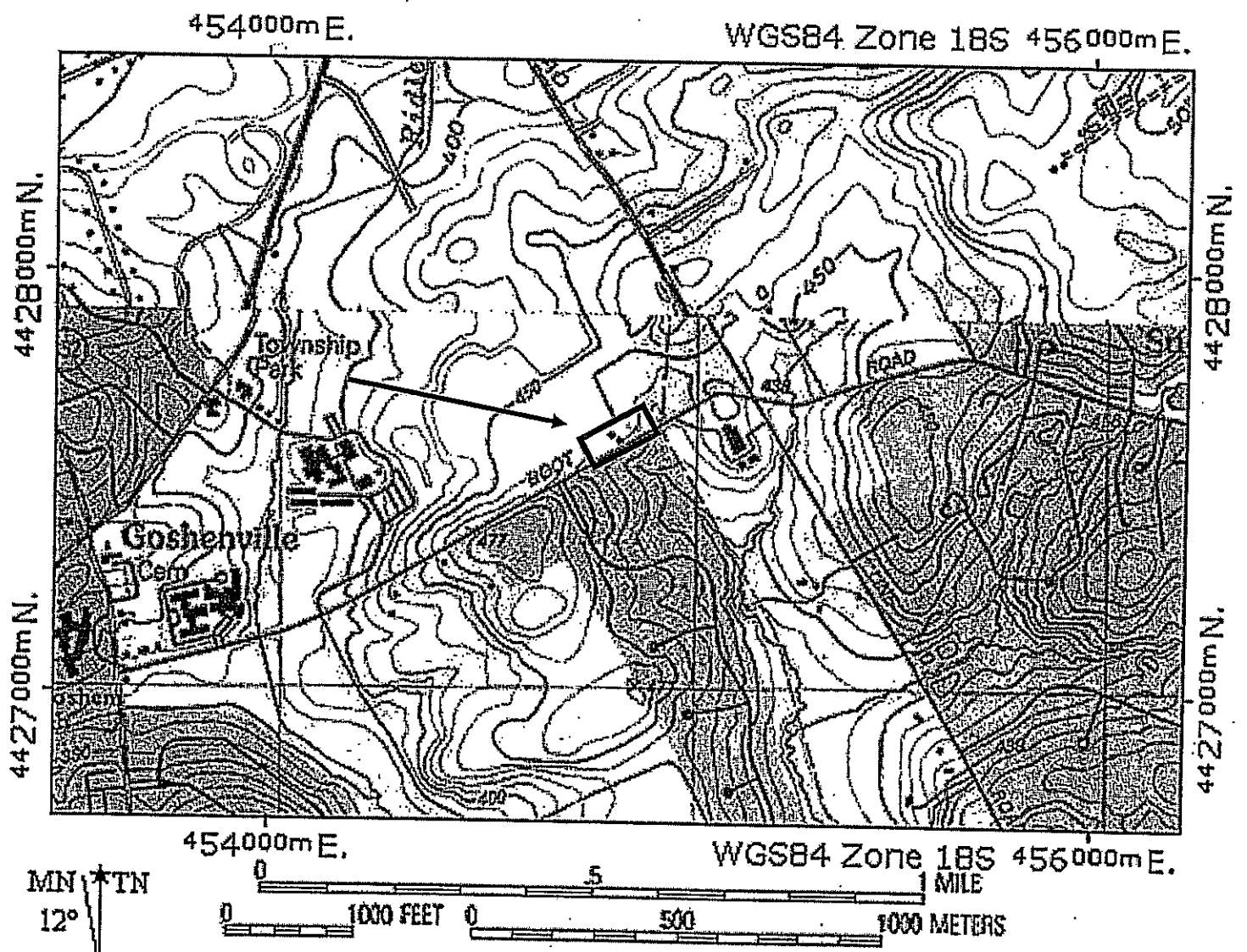
- 1 First Floor
- 2 Second Floor

United States Department of the Interior  
National Park Service

National Register of Historic Places  
Continuation Sheet

Williams, Ellis House  
name of property  
Chester County, PA  
county and state

Additional Documentation, page 2



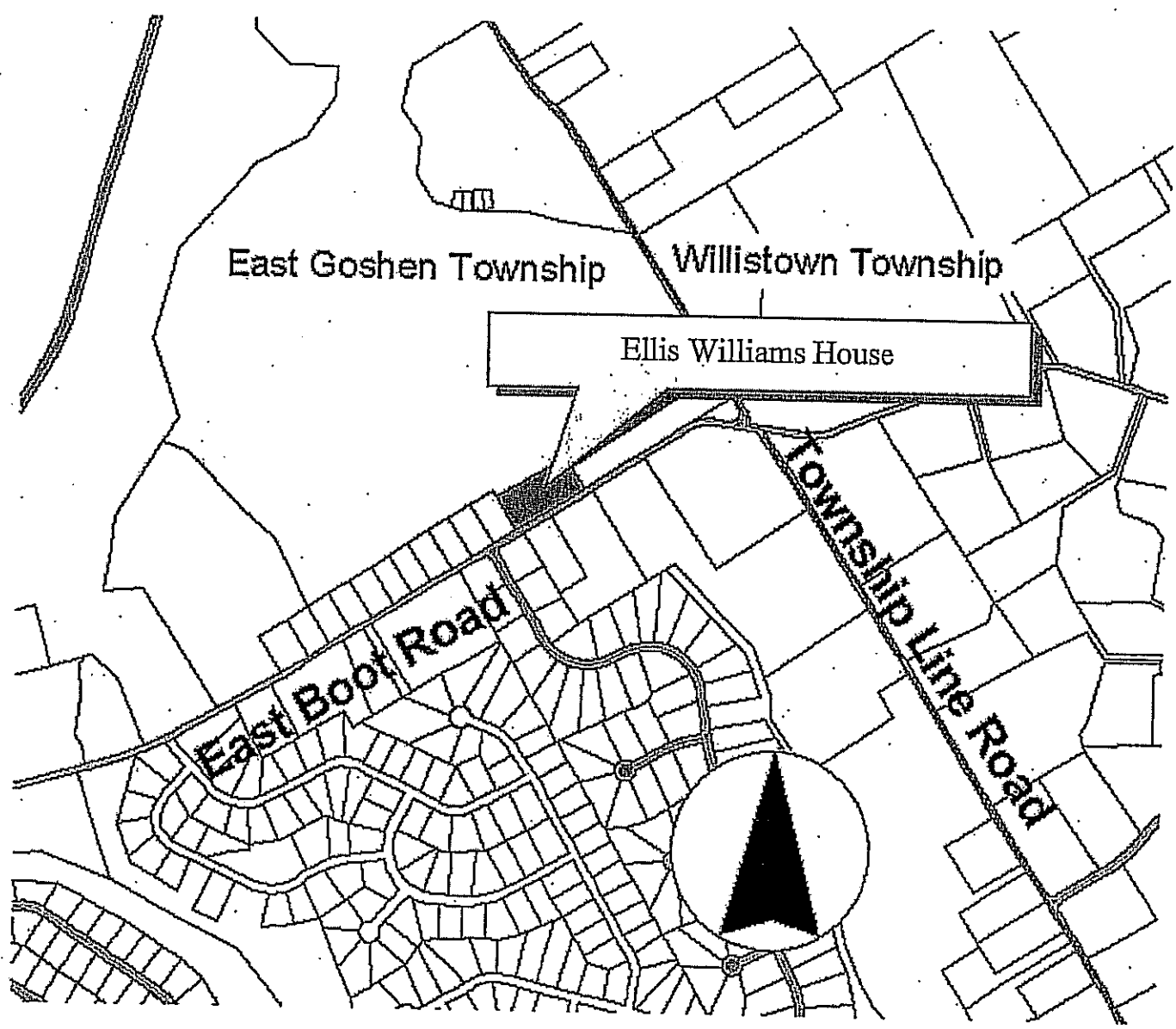
Map 1. USGS Quad Map (Wet Chester Quad).

United States Department of the Interior  
National Park Service

National Register of Historic Places  
Continuation Sheet

Williams, Ellis House  
name of property  
Chester County, PA  
county and state

Additional Documentation, page 3



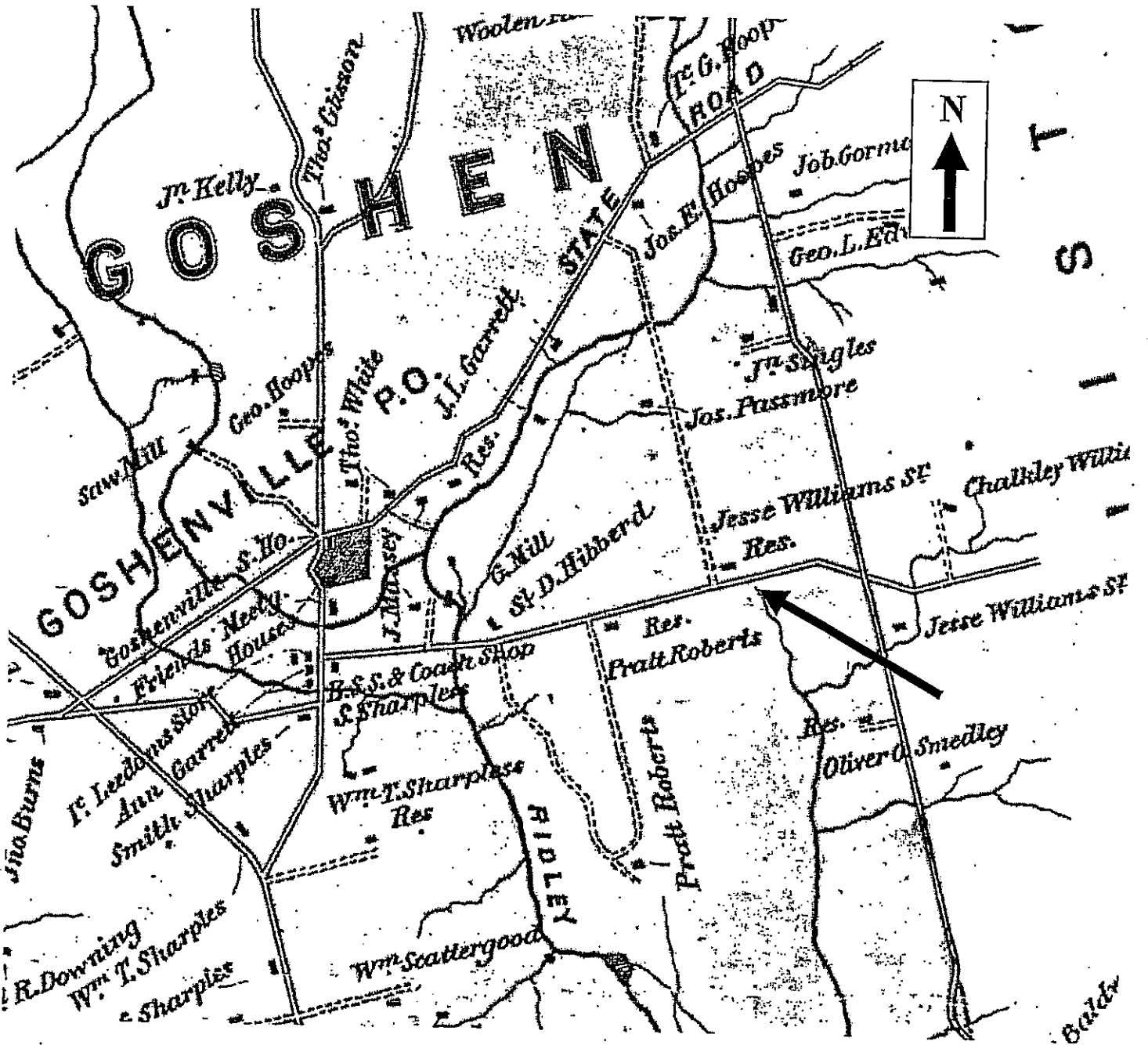
Map 2. Tax Map (2002).

United States Department of the Interior  
National Park Service

National Register of Historic Places  
Continuation Sheet

Williams, Ellis House  
name of property  
Chester County, PA  
county and state

Additional Documentation, page 4



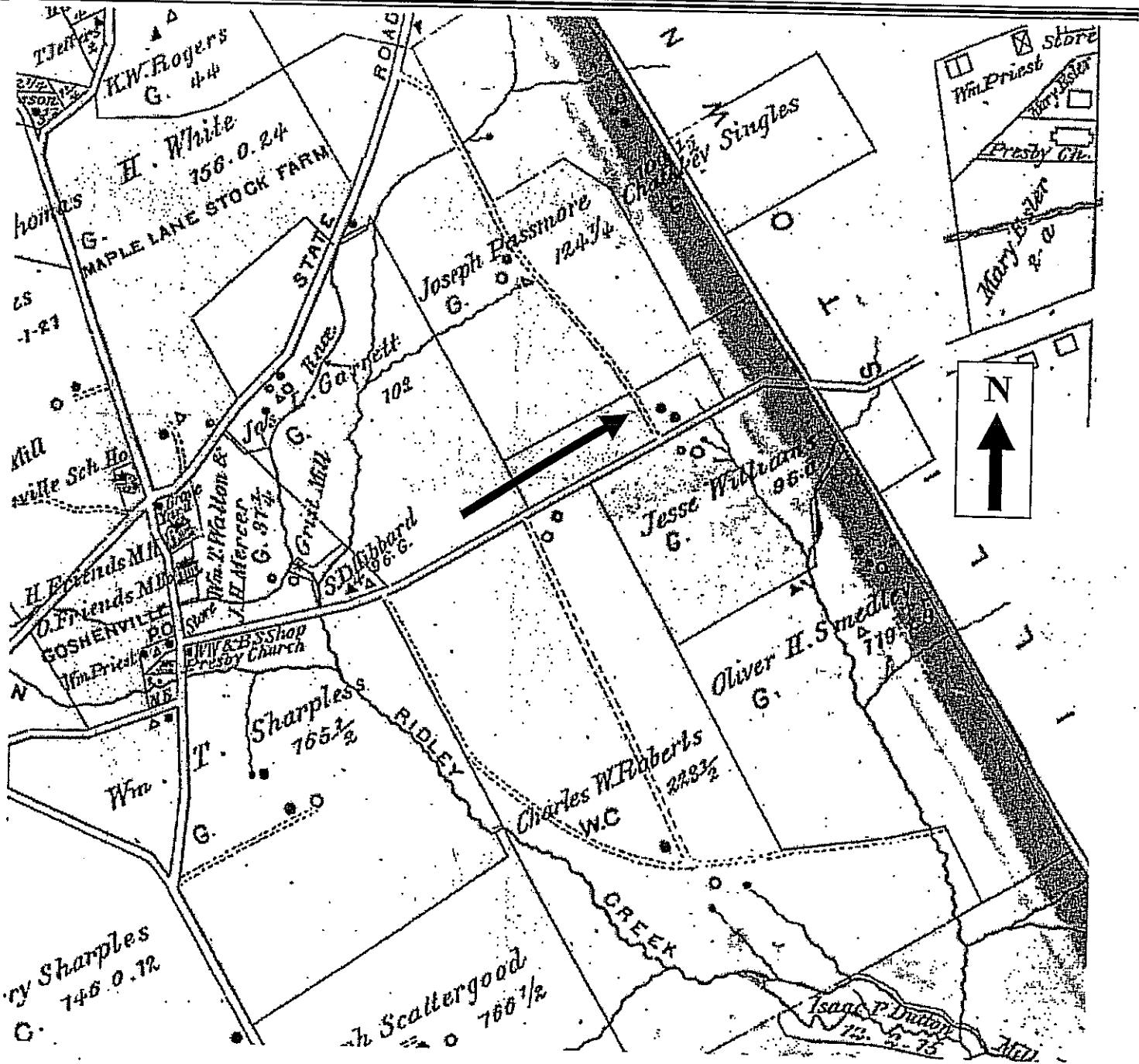
Map 3. Detail of Witmer Atlas (1873).

United States Department of the Interior  
National Park Service

National Register of Historic Places  
Continuation Sheet

Williams, Ellis House  
name of property  
Chester County, PA  
county and state

Additional Documentation, page 5



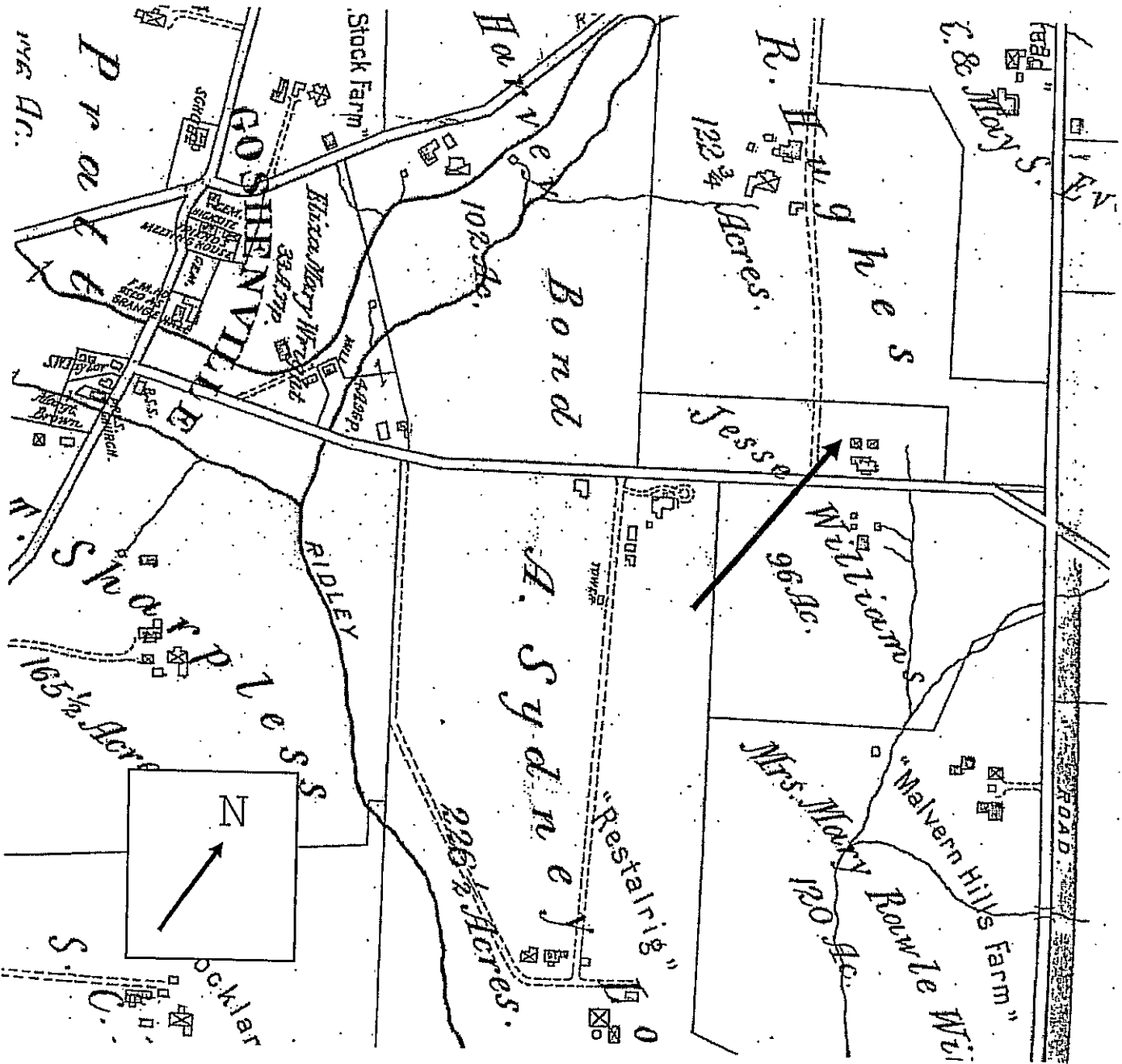
Map 4. Detail of Breous Atlas (1883). Note that the house and current barn are indicated on the north side of East Boot Road, while the former barn and springhouse are indicated on the south side.

United States Department of the Interior  
National Park Service

National Register of Historic Places  
Continuation Sheet

Williams, Ellis House  
name of property  
Chester County, PA  
county and state

Additional Documentation, page 6



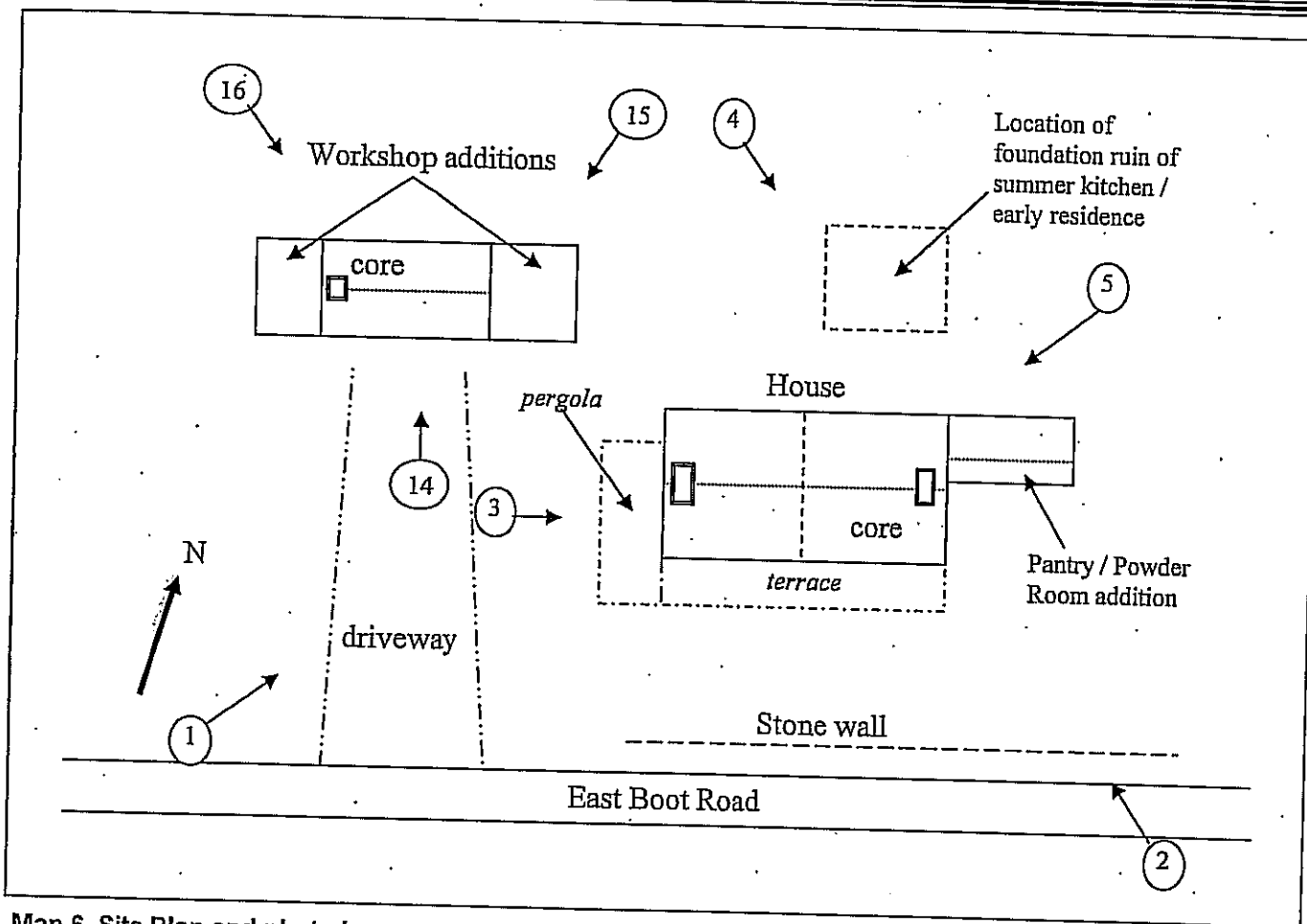
Map 5. Mueller Map of 1912.

United States Department of the Interior  
National Park Service

National Register of Historic Places  
Continuation Sheet

Williams, Ellis House  
name of property  
Chester County, PA  
county and state

Additional Documentation, page 7



Map 6. Site Plan and photo key.

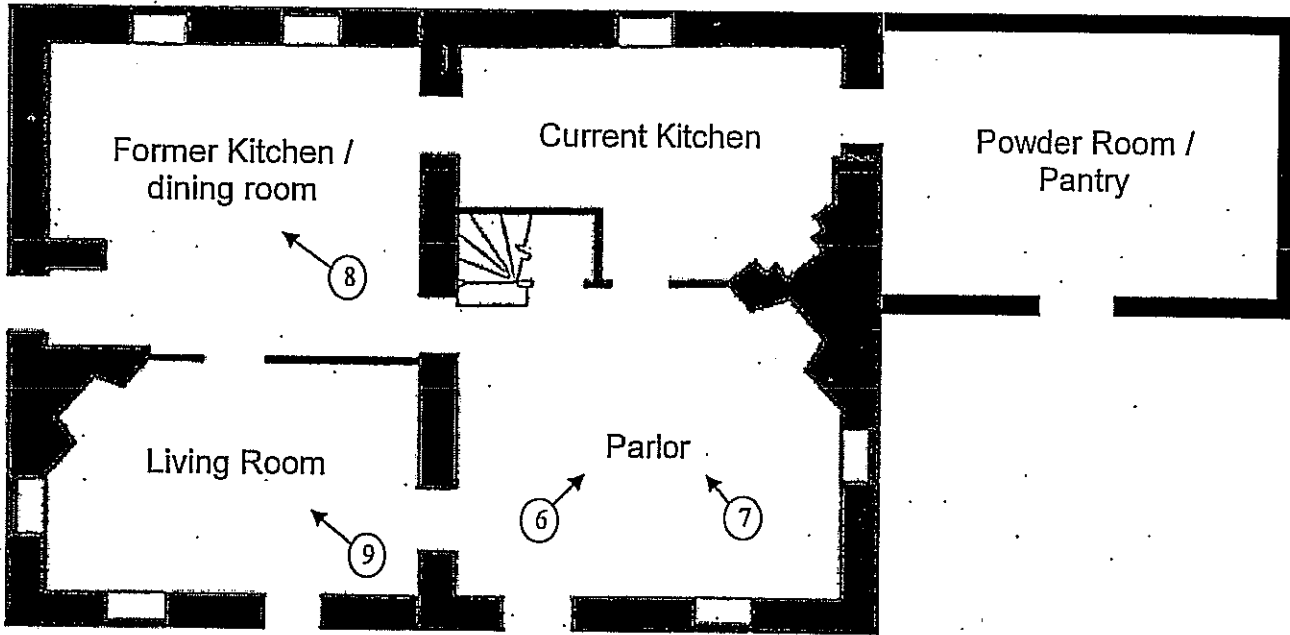


United States Department of the Interior  
National Park Service

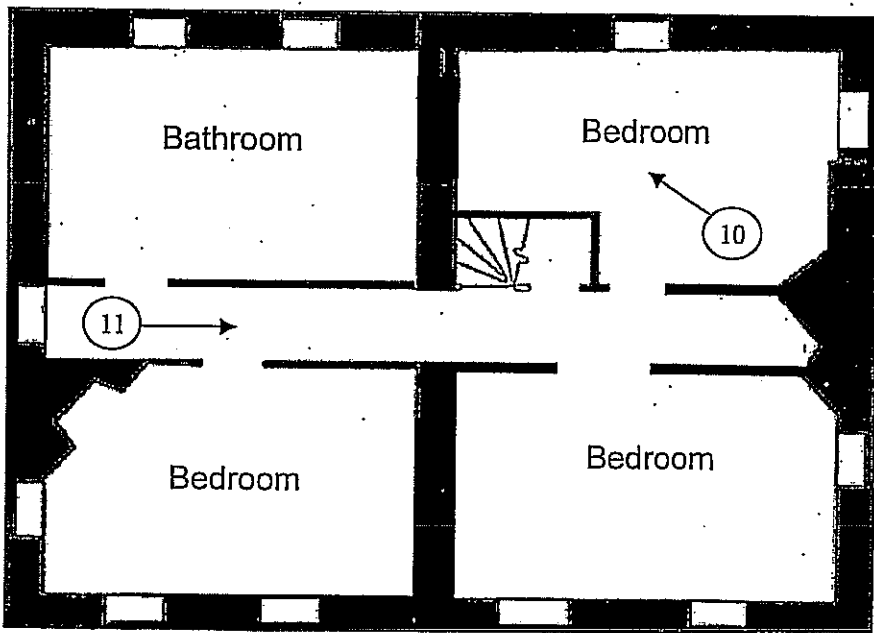
National Register of Historic Places  
Continuation Sheet

Williams, Ellis House  
name of property  
Chester County, PA  
county and state

Additional Documentation, page 8



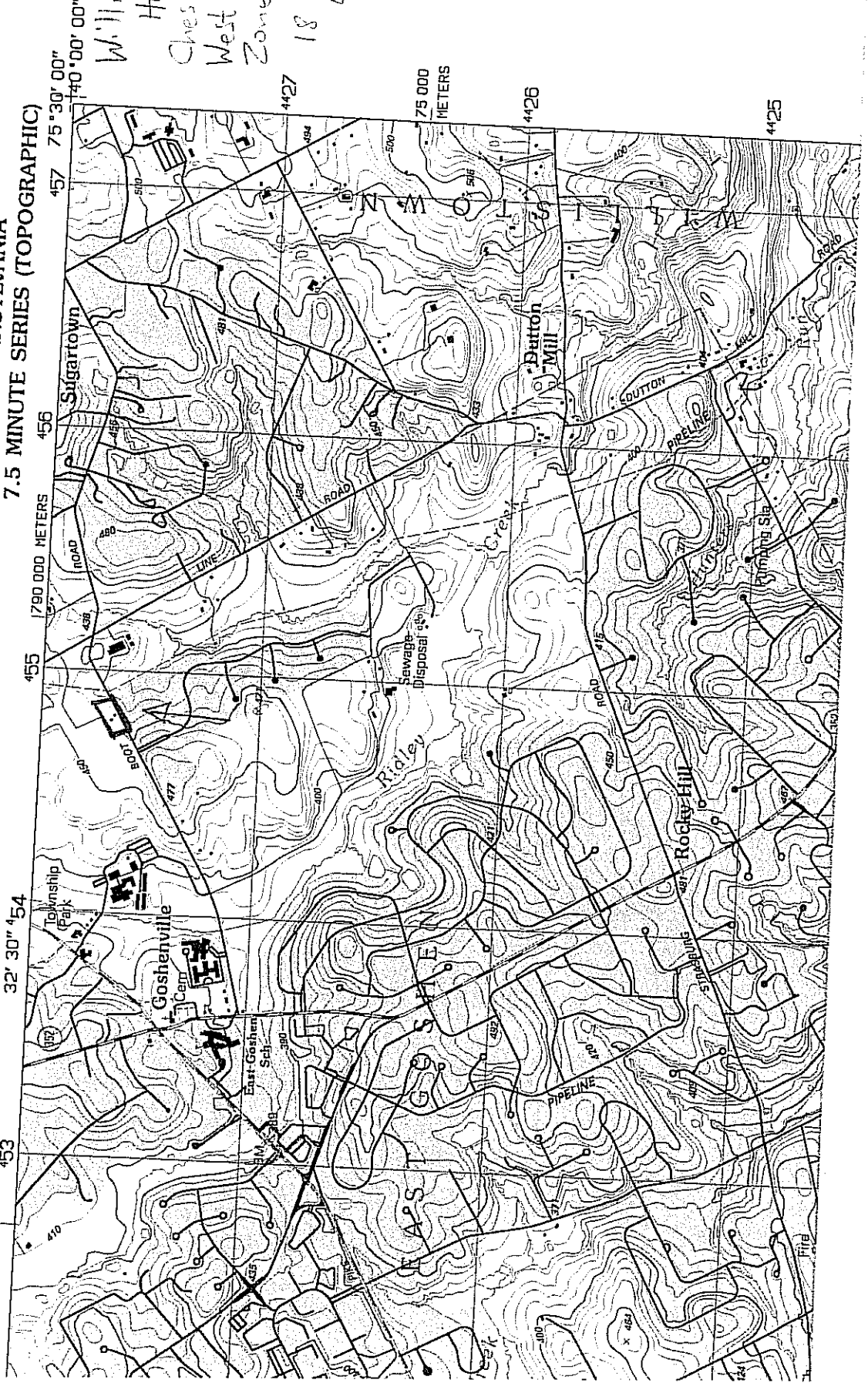
Floorplan 1: First Floor. North at top.



Floorplan 2: Second Floor. North at top.

COMMONWEALTH OF PENNSYLVANIA  
DEPARTMENT OF CONSERVATION AND NATURAL RESOURCES  
BUREAU OF TOPOGRAPHIC AND GEOLOGIC SURVEY

WEST CHESTER QUADRANGLE  
PENNSYLVANIA  
7.5 MINUTE SERIES (TOPOGRAPHIC)



*Williams, Ernest  
House  
Chester County  
West Chester Road  
Zone 18  
18 454837  
4427608*