

United States Department of the Interior
National Park Service

NATIONAL REGISTER OF HISTORIC PLACES
REGISTRATION FORM

=====

1. Name of Property

historic name: Lewisburg Armory

other name/site number: N/A

=====

2. Location

street & number: U.S. Route 15

city/town: East Buffalo Township not for publication: N/A
vicinity: N/A

state: PA county: Union code: 119 zip code: 17837

=====

3. Classification

Ownership of Property: public-state

Category of Property: building(s)

Number of Resources within Property:

Contributing	Noncontributing	
<u>1</u>	<u>0</u>	buildings
<u> </u>	<u> </u>	sites
<u> </u>	<u> </u>	structures
<u> </u>	<u> </u>	objects
<u>1</u>	<u>0</u>	Total

Number of contributing resources previously listed in the National Register: 0

Name of related multiple property listing: Pennsylvania

National Guard Armories

4. State/Federal Agency Certification

As the designated authority under the National Historic Preservation Act of 1966, as amended, I hereby certify that this nomination request for determination of eligibility meets the documentation standards for registering properties in the National Register of Historic Places and meets the procedural and professional requirements set forth in 36 CFR Part 60. In my opinion, the property meets does not meet the National Register criteria. See continuation sheet.

Signature of certifying official Date

State or Federal agency and bureau

In my opinion, the property meets does not meet the National Register criteria. See continuation sheet.

Signature of commenting or other official Date

State or Federal agency and bureau

5. National Park Service Certification

I, hereby, certify that this property is:

- entered in the National Register. See continuation sheet.
determined eligible for the National Register. See continuation sheet.
determined not eligible for the National Register.
removed from the National Register.
other (explain):

Signature of Keeper Date of Action

6. Function or Use

Historic: Defense Sub: Arms Storage
Current: Defense Sub: Arms Storage

=====
7. Description
=====

Architectural Classification:

Moderne

Materials:

foundation concrete block
walls brick/concrete block
roof unknown
other _____

Describe present and historic physical appearance.

X See continuation sheet.

=====
8. Statement of Significance
=====

Certifying official has considered the significance of this property in relation to other properties: statewide

Applicable National Register Criteria: A, C

Criteria Considerations (Exceptions): _____

Areas of Significance: Military
Architecture

Period of Significance: 1938-1939

Significant Dates: 1938

Cultural Affiliation: N/A

Significant Person: N/A

Architect/Builder: unknown

State significance of property, and justify criteria, criteria considerations, and areas and periods of significance noted above.

X See continuation sheet.

9. Major Bibliographical References

X See continuation sheet.

Previous documentation on file (NPS):

- preliminary determination of individual listing (36 CFR 67) has been requested.
- previously listed in the National Register.
- previously determined eligible by the National Register.
- designated a National Historic Landmark.
- recorded by Historic American Buildings Survey # _____.
- recorded by Historic American Engineering Record # _____.

Primary Location of Additional Data:

- X State historic preservation office.
- Other state agency.
- Federal agency.
- Local government.
- University.
- Other -- Specify Repository: _____.

10. Geographical Data

Acreage of Property: 13

UTM References:

A	<u>18</u>	<u>341900</u>	<u>4534290</u>	B	<u>18</u>	<u>341620</u>	<u>4534110</u>
	Zone	Easting	Northing		Zone	Easting	Northing
C	<u>18</u>	<u>341540</u>	<u>4534230</u>	D	<u>18</u>	<u>341780</u>	<u>4534520</u>
	Zone	Easting	Northing		Zone	Easting	Northing

Verbal Boundary Description: X See continuation sheet.

Boundary Justification:

The legal boundaries which are historically associated with the property. See continuation sheet.

11. Form Prepared By

Name/Title: Kristine Wilson/Joseph Burke, III -- Interns
 Organization: PHMC -- BHP Date: 7/23/90
 Street & Number: Box 1026 Telephone: (717) 783-8946
 City or Town: Harrisburg State: PA Zip Code: 171018-1026

United States Department of the Interior
National Park Service

NATIONAL REGISTER OF HISTORIC PLACES
CONTINUATION SHEET

Section number: 7 Lewisburg Armory Page 2

=====

7. Description.

The Lewisburg Armory is located on a spacious lot along U.S. Route 15 in East Buffalo Township, just South of Lewisburg. Fronted by shrubs, and surrounded by driveways and a lawn, the armory is designed in the Moderne style. Covering an estimated area of 15,000 square feet, the armory is laid out on an I plan, with the one-and-one-half-story, concrete block, drill hall sandwiched on transverse axis between the two-story, mostly brick, front, administrative section and the two-story, brick, rear, former stable. Both the administrative section and the former stable have one-story, brick, wings. Constructed in 1938, the armory retains good integrity.

The armory has a concrete block foundation. A hip roof covers the administrative section, while an arched roof covers the drill hall. Each of the one-story wings and the former stable are covered by flat roofs. Exterior features of the armory include multi-light casement windows with brick sills, and a brick chimney.

The front (west) facade of the administration section has a projecting, two-story, three-bay portion fronted with stone, suggesting a smooth entablature supported by four wide pilasters. Three brick panels recessed behind the stone are pierced by a casement window on each floor. Divided in half by a horizontal stone course, the center panel contains a recessed, double door entrance and transom sash on the first story. Concrete steps with iron pipe railing lead from the entrance down to the paved drive. The one-story wings to either side of the two-story portion are pierced by four casement windows.

The north and south side elevations of the administrative section have windows piercing the basement and first story of the wings, with two windows appearing on the exposed, second story of the center portion. Double doors and a transom pierce the side elevation of the south wing, with concrete stairs leading to the ground.

The north and south ends of the drill hall project from between the administrative section and former stable section. These elevations feature an arched roof line above three narrow windows flanking each side of door openings. On the south elevation the door opening is a garage door; on the north, there are two doors

United States Department of the Interior
National Park Service

NATIONAL REGISTER OF HISTORIC PLACES
CONTINUATION SHEET

Section number: 7 Lewisburg Armory Page 3

=====

set in recessed brick. The door openings on both elevations are framed by brick, with a stylized Moderne brick pattern in a brick panel above the openings. Piers with stone caps punctuate the ends of the drill hall elevations. Doors pierce the south elevation between the piers and the narrow windows.

The former stable section is more plain in appearance than the administrative section. The rear (east) elevation of the two-story portion is pierced by a second-story door with descending metal stairway centered above first-story double doors. Two windows flank the first-story doors. The rear elevations of the flanking wings are opened by small casement windows. The north and south elevations of the wings are opened by small windows, and a garage door on the south wing and a door on the north wing. The exposed north and south elevations of the two-story portion are pierced by windows.

On the interior, much of the basement remains unexcavated, except for the area under the administrative section, containing a shooting range, pump room, boiler room, and storage space. On the first floor, the administrative section contains mainly offices along a single loaded corridor. An entrance hall leads from the front entrance back to the corridor. Measuring 128 x 70 feet, the drill hall has a drop ceiling that conceals the roof supports. Doors lead from the drill hall into the former stable kitchen, locker room, and motor maintenance room. A narrow hall also leads from the drill hall to a tool room, command room, custodial room, lavatory, and showers in the former stable section. The second floor of the administrative section contains a class room, storage room, and old kitchen. The second floor of the former stable was a hayloft that has been converted into a class room.

Major changes to the armory include renovation of the stable, with walls added in order to create new rooms, and replacement of a number of exterior doors, including a drill hall garage door. A drop ceiling was also installed in the drill hall. However, the armory still retains good integrity.

United States Department of the Interior
National Park Service

NATIONAL REGISTER OF HISTORIC PLACES
CONTINUATION SHEET

Section number: 8, 9, 10

Lewisburg Armory

Page 2

8. Significance.

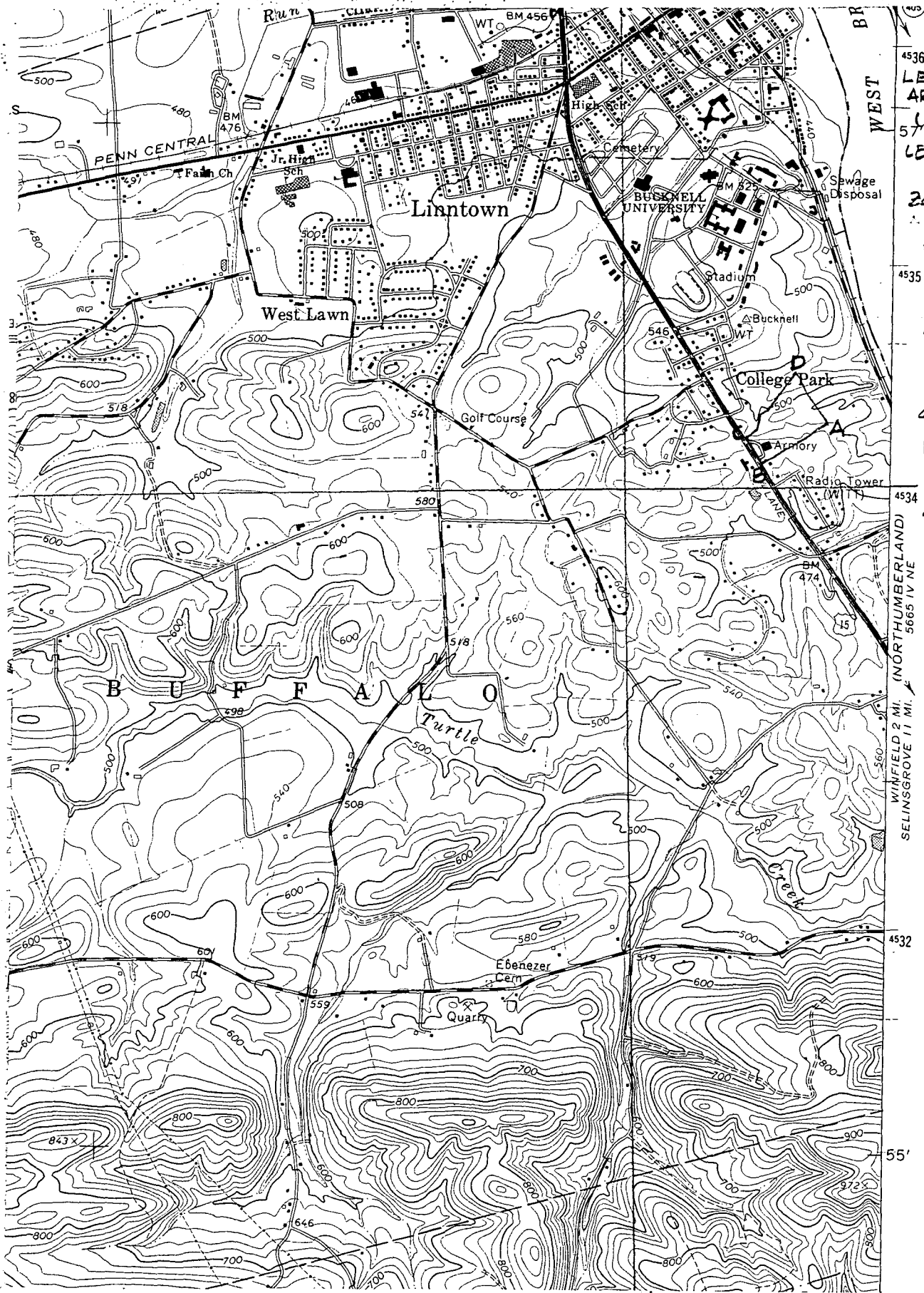
The Lewisburg Armory is significant under criteria A and C. It is a member of the State Armory Building Property type under the multiple property nomination: Pennsylvania National Guard Armories. It was built in 1938 for Company M, 1st (Cavalry) Regiment of the Pennsylvania National Guard. The Lewisburg Armory is one of nine armories built in Pennsylvania, between 1912 and 1938, consisting of an I plan. I plan-type armories were typically constructed for cavalry units, with the stable being located in the rear wing. Consequently, due to the odors associated with stables and the need for grazing areas, most of these armories were constructed on the outskirts of towns. The Lewisburg Armory represents the common function of armories to serve the Pennsylvania National Guard for storage, meeting, and training. As such it is significant in the context of Pennsylvania's military history as well as representing a distinctive building type.

Bibliography.

See section H in Multiple Resource Nomination: Pennsylvania National Guard Armories.

10. Verbal Boundary Description.

See Union County Deed Book, Volume 64, page 488.



4536
LEWISBURG
ARMORY
Monroe County
 5730
LEWISBURG
QUAD
ZONE 18
A
 341900 E
 4534290 N
 4535
B
 341620 E
 4534110 N
C
 341540 E
 4534230 N
D
 341780 E
 4534520 N

4534
 WINFIELD 2 MI. (NORTHUMBERLAND)
 SELINGSGROVE 11 MI.

55'