

United States Department of the Interior
National Park Service

NATIONAL REGISTER OF HISTORIC PLACES
REGISTRATION FORM

=====

1. Name of Property

=====

historic name: Pennsylvania Railroad - Bridge over Shavers Creek

other name/site number: Conrail - Bridge over Shavers Creek

=====

2. Location

=====

street & number: south end of Petersburg, near junction of Shavers
Creek and Juniata River

not for publication: N/A

city/town: Petersburg (Logan Township)

vicinity: N/A

state: PA county: Huntingdon code: 061

zip code: 16669

=====

3. Classification

=====

Ownership of Property: Private

Category of Property: Structure (Bridge)

Number of Resources within Property:

Contributing	Noncontributing	
_____	_____	buildings
_____	_____	sites
_____1	_____	structures
_____	_____	objects
_____1	_____0	Total

Number of contributing resources previously listed in the National Register: 0

Name of related multiple property listing: Industrial Resources of
Huntingdon County

4. State/Federal Agency Certification

As the designated authority under the National Historic Preservation Act of 1986, as amended, I hereby certify that this X nomination request for determination of eligibility meets the documentation standards for registering properties in the National Register of Historic Places and meets the procedural and professional requirements set forth in 36 CFR Part 60. In my opinion, the property X meets does not meet the National Register Criteria. See continuation sheet.

Dr. Brent D. Glass

Brent D. Glass

1/30/90

Signature of certifying official

Date

Pennsylvania Historical and Museum Commission

State or Federal agency and bureau

In my opinion, the property meets does not meet the National Register criteria. See continuation sheet.

Signature of commenting or other official

Date

State or Federal agency and bureau

5. National Park Service Certification

I, hereby certify that this property is:

 entered in the National Register
 See continuation sheet.

 determined eligible for the National Register
 See continuation sheet.

 determined not eligible for the National Register

 removed from the National Register

 other (explain):

Signature of Keeper

Date of Action

6. Function or Use

Historic: Transportation

Sub: Rail-Related

Current : Transportation

Sub: Rail-Related

7. Description

Architectural Classification:

Other

Other Description: stone arch bridge

Materials: foundation stone roof N/A
walls N/A other stone

Describe present and historic physical appearance. X See continuation sheet.

8. Statement of Significance

Certifying official has considered the significance of this property in relation to other properties: locally.

Applicable National Register Criteria: A C

Criteria Considerations (Exceptions) :

Areas of Significance: 290 Transportation
110 Engineering

Period(s) of Significance: 1889-1939

Significant Dates : 1889

Years of Alterations:

Significant Person(s): N/A

Cultural Affiliation: N/A

Architect/Builder: Pennsylvania Railroad

State significance of property, and justify criteria, criteria considerations, and areas and periods of significance noted above. X See continuation sheet.

United States Department of the Interior
National Park Service

NATIONAL REGISTER OF HISTORIC PLACES
CONTINUATION SHEET

Section number 7

PRR Bridge over Shavers Creek Page #2

DESCRIPTION OF APPEARANCE:

The Pennsylvania Railroad Bridge over Shavers Creek outside Petersburg is located in a rural part of northern Huntingdon County. This 134-foot cut stone three-arch railroad bridge is reinforced on its south face with a series of triangular metal brackets supporting curbing at the edge of the right-of-way. These were added at an unknown time. A recent addition are the metal safety railings on either side of the bridge surface. The intrados or underside of the arches were constructed with step-like ribbing for support. The faces of the bridge are cut coursed unfinished stone with semi-circular arches. The bridge carries the two-track railroad over Shavers Creek in Petersburg. The material and setting of this bridge retain sufficient integrity.

United States Department of the Interior
National Park Service

NATIONAL REGISTER OF HISTORIC PLACES
CONTINUATION SHEET

Section number 8

PRR Bridge over Shavers Creek Page #2

SIGNIFICANCE:

This bridge is being nominated under Criteria A for its association with local transportation in Huntingdon County and C as an fine example of a stone-arch bridge. It was evaluated on a local level.

According to Conrail records, this stone-arch bridge across Shaver's Creek, near its junction with the Juniata River at Petersburg, was constructed in 1889. That construction date for bridges often suggests the rebuilding of a bridge lost or damaged in the 1889 Flood, although no evidence has been found to confirm that such was the case with this particular bridge. Rather, available records show six stone-arch railroad bridges constructed in the county between 1886 and 1889, suggesting that the PRR was engaged in a program of replacing its first-generation iron bridges with heavier masonry structures.

Conrail records indicate the most recent major repairs to the structure occurred in 1967, which may be the date when the metal brackets already described were added. This is the only stone-arch railroad bridge still in use in the county which has not had concrete supports applied to its face.

The Pennsylvania Railroad Bridge over Shavers Creek is a good example of a nineteenth century multiple span stone arch bridge built by the Pennsylvania Railroad for their right-of-way. With its good integrity it is a fine example of the second phase of bridge construction used by the Pennsylvania Railroad in their right-of-way. It contributed to the important transportation network of the Pennsylvania Railroad in Huntingdon County.

9. Major Bibliographical References

See continuation sheet.

Previous documentation on file (NPS):

- preliminary determination of individual listing (36 CFR 67) has been requested.
- previously listed in the National Register
- previously determined eligible by the National Register
- designated a National Historic Landmark
- recorded by Historic American Buildings Survey # _____
- recorded by Historic American Engineering Record # PA 061.076

Primary Location of Additional Data:

- State historic preservation office
- Other state agency
- Federal agency
- Local government
- University
- Other -- Specify Repository: Conrail, Corporate Circle Harrisburg offices

10. Geographical Data

Acreage of Property: less than 1 acre

UTM References: Zone Easting Northing Zone Easting Northing

A	17	749880	4494665	B	_____	_____
C	_____	_____	_____	D	_____	_____

_____ See continuation sheet.

Verbal Boundary Description: _____ See continuation sheet.

The nominated property consists of a 134 feet by about 60 feet wide rectangle whose vertices coincide with the outside corners of the bridge's wing walls, and includes only bridge superstructure and substructure.

Boundary Justification: _____ See continuation sheet.

The boundaries include the entire nominated structure.

11. Form Prepared By

Name/Title: Deborah L. Suciu - Historic Preservation Specialist

Organization: PHMC - BHP

Date: September 1989

Street & Number: Box 1026 State Museum

Telephone: (717) 783-5796

City or Town: Harrisburg

State: PA ZIP: 17108-1026

United States Department of the Interior
National Park Service

NATIONAL REGISTER OF HISTORIC PLACES
CONTINUATION SHEET

Section number 9

PRR Bridge over Shavers Creek Page #2

SOURCES:

Conrail. List of Undergrade and Overhead Structures. (Office of the Chief Engineer. - Maintenance of Way, 1 January 1988), pp. 20-21.

Huntingdon County Historical Society. John Nelson Thompson Photographs, Photograph Collection. [Construction of bridge]

Huntingdon County, Pennsylvania: An Inventory of Historic Engineering and Industrial Sites, Historic American Building Survey/Historic American Engineering Record, National Park Service(unpublished, 1988).

Petersburg and Shavers Creek Valley (Huntingdon: Petersburg Bicentennial Committee, 1976), p. 30. [Early photograph of bridge]

Shedd, Nancy S. HAER consultant 1988, President Huntingdon County Historical Society, interviews 1988-1989.

**United States Department of the Interior
National Park Service**

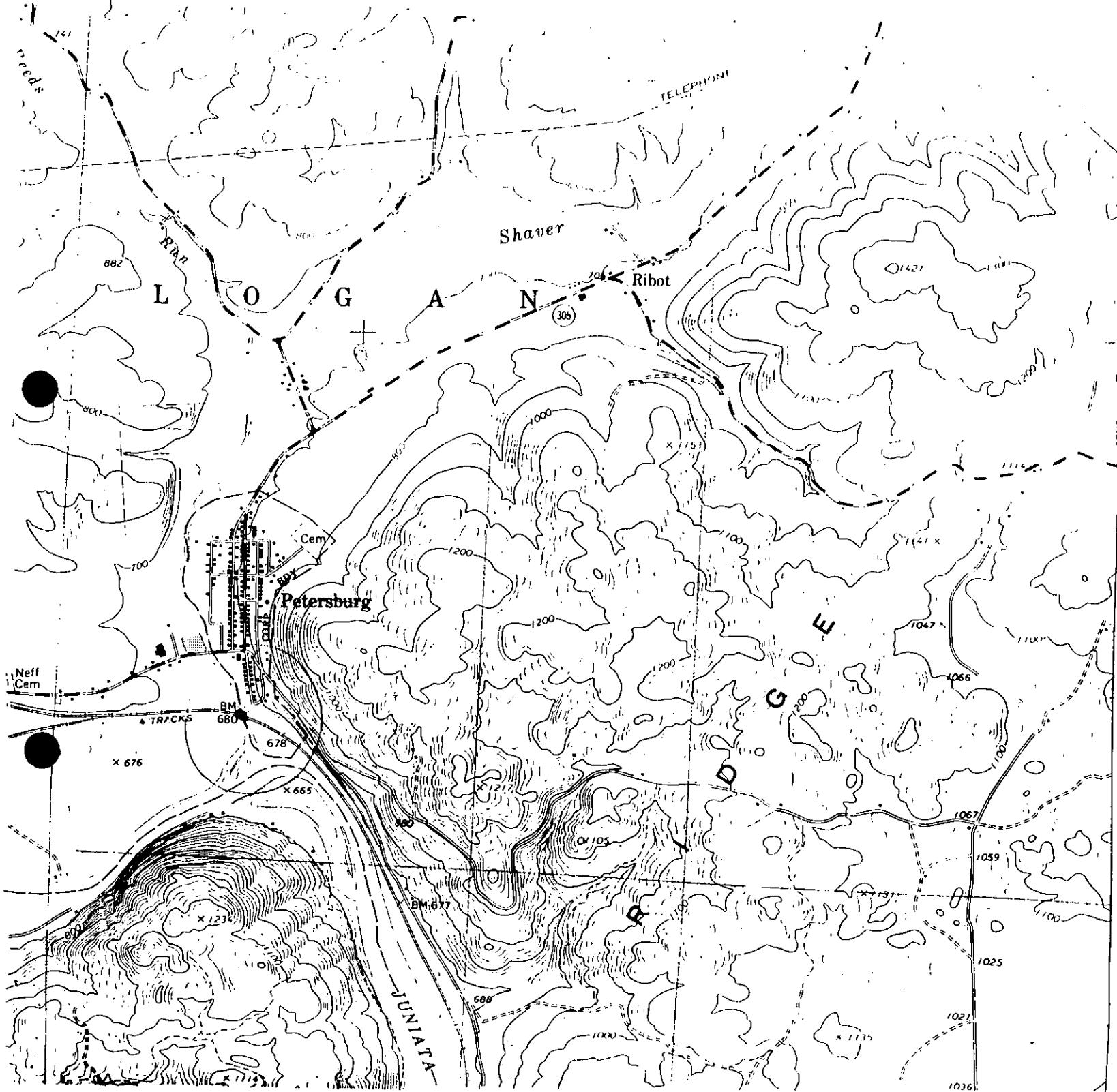
**National Register of Historic Places
Continuation Sheet**

PRR Bridge over Shavers Creek

Section number 11 Page 1

This nomination contains material taken directly from the unpublished report prepared in 1988 for the Historic American Engineering Record (see Bibliographical References).

The author of that report, Nancy Shedd, is a major contributor to the text of this nomination although not the preparer.



YKK PRIDE SUPER SHAVES CREEM
 KENNEDY CO
 ZONE 17 - ALEXANDRIA QUAD
 749520 4494605

(DONATION)
 5465 III SW