

United States Department of the Interior  
National Park Service

NATIONAL REGISTER OF HISTORIC PLACES  
REGISTRATION FORM

1. Name of Property

historic name: Frehn Bridge

other name/site number: .Huntingdon County Bridge #1

2. Location

street & number: township route 313, 2 mi. W of State Route 475

not for publication: N/A

city/town: Springfield Township

vicinity: N/A

state: PA county: Huntingdon code: 061

zip code: 17264

3. Classification

Ownership of Property: Public - Local

Category of Property: Structure (Bridge)

Number of Resources within Property:

Contributing	Noncontributing
_____	_____ buildings
_____	_____ sites
_____ 1	_____ structures
_____	_____ objects
_____ 1	_____ 0 Total

Number of contributing resources previously listed in the National Register: 0

Name of related multiple property listing: Industrial Resources of  
Huntingdon County

4. State/Federal Agency Certification

As the designated authority under the National Historic Preservation Act of 1986, as amended, I hereby certify that this nomination request for determination of eligibility meets the documentation standards for registering properties in the National Register of Historic Places and meets the procedural and professional requirements set forth in 36 CFR Part 60. In my opinion, the property meets does not meet the National Register Criteria. See continuation sheet.

Signature of certifying official Date

State or Federal agency and bureau

In my opinion, the property meets does not meet the National Register criteria. See continuation sheet.

Signature of commenting or other official Date

State or Federal agency and bureau

5. National Park Service Certification

I, hereby certify that this property is:

- entered in the National Register See continuation sheet.
determined eligible for the National Register See continuation sheet.
determined not eligible for the National Register
removed from the National Register
other (explain):

Signature of Keeper Date of Action

6. Function or Use

Historic: Transportation Sub: Road-Related
Current : Transportation Sub: Road-Related

7. Description

Architectural Classification:

Other

Other Description: Pratt through truss bridge

Materials: foundation concrete roof N/A
walls N/A other steel

Describe present and historic physical appearance. X See continuation sheet.

8. Statement of Significance

Certifying official has considered the significance of this property in relation to other properties: locally.

Applicable National Register Criteria: C

Criteria Considerations (Exceptions) :

Areas of Significance: Engineering

Period(s) of Significance: c.1890

Significant Dates : c.1890

Years of Alterations:

Significant Person(s): N/A

Cultural Affiliation: N/A

Architect/Builder: unknown

State significance of property, and justify criteria, criteria considerations, and areas and periods of significance noted above. X See continuation sheet.

United States Department of the Interior  
National Park Service

NATIONAL REGISTER OF HISTORIC PLACES  
CONTINUATION SHEET

Section number   7  

Frehn Bridge Page #2

---

DESCRIPTION OF APPEARANCE:

Spanning Sideling Hill Creek in southern Springfield Township, this 120-foot, single span, pin-connected Pratt through truss bridge has a 13.75-foot-wide timber deck and the original gravity-type (rather than reinforced) concrete abutments and wing walls. It retains integrity of material, design and setting. The bridge is in a rural area in the southern part of the county.

United States Department of the Interior  
National Park Service

NATIONAL REGISTER OF HISTORIC PLACES  
CONTINUATION SHEET

Section number   8  

Frehn Bridge Page #2

---

---

SIGNIFICANCE:

The Frehn Bridge is a fine example of one of the county's less than ten remaining pin-connected Pratt through truss bridges likely built in the late 1800's. The bridge has been well maintained and retains its integrity of material, design and setting. Frehn Bridge has been evaluated at a local level and is important in the area of engineering.

The Huntingdon County bridge office has no information on the history of the Frehn bridge in Springfield Township, and a search of bridge contracts in the County Commissioners office did not reveal any information on its construction.

=====

9. Major Bibliographical References

=====

X See continuation sheet.

Previous documentation on file (NPS):

- preliminary determination of individual listing (36 CFR 67) has been requested.
- previously listed in the National Register
- previously determined eligible by the National Register
- designated a National Historic Landmark
- recorded by Historic American Buildings Survey # \_\_\_\_\_
- recorded by Historic American Engineering Record # PA 061.070

Primary Location of Additional Data:

- State historic preservation office
- Other state agency
- Federal agency
- Local government
- University
- Other -- Specify Repository: County Courthouse-bridge files

=====

10. Geographical Data

=====

Acreage of Property: less than 1 acre

UTM References: Zone Easting Northing      Zone Easting Northing

A	18	245135	4446640	B	_____	_____	_____
C	_____	_____	_____	D	_____	_____	_____

\_\_\_\_ See continuation sheet.

Verbal Boundary Description: \_\_\_\_ See continuation sheet.

The nominated property consists of a 130 feet by 40 feet wide rectangle whose vertices coincide with the outside corners of the bridge's wing walls, and includes only bridge superstructure and substructure.

Boundary Justification: \_\_\_\_ See continuation sheet.

The boundaries include the entire nominated structure.

=====

11. Form Prepared By

=====

Name/Title: Deborah L. Suciu - Historic Preservation Specialist

Organization: PHMC - BHP

Date: September 1989

Street & Number: Box 1026 State Museum

Telephone: (717) 783-5796

City or Town: Harrisburg

State: PA ZIP: 17108-1026

United States Department of the Interior  
National Park Service

NATIONAL REGISTER OF HISTORIC PLACES  
CONTINUATION SHEET

Section number   9  

Frehn Bridge Page #2

---

---

SOURCES:

Brown, Martin. Huntingdon County Commissioner. Interview, 9 December 1988.

Huntingdon County Bridge Office. Bridge file #1.

Huntingdon County, Pennsylvania: An Inventory of Historic Engineering and Industrial Sites, Historic American Building Survey/Historic American Engineering Record, National Park Service(unpublished, 1988).

PennDOT, District 9 office, Hollidaysburg, Pa. Computer print-out: county and township bridges in Huntingdon County, 1 August 1988.

Shedd, Nancy S. HAER consultant 1988, President Huntingdon County Historical Society, interviews 1988-1989.

**United States Department of the Interior  
National Park Service**

**National Register of Historic Places  
Continuation Sheet**

Frehn Bridge

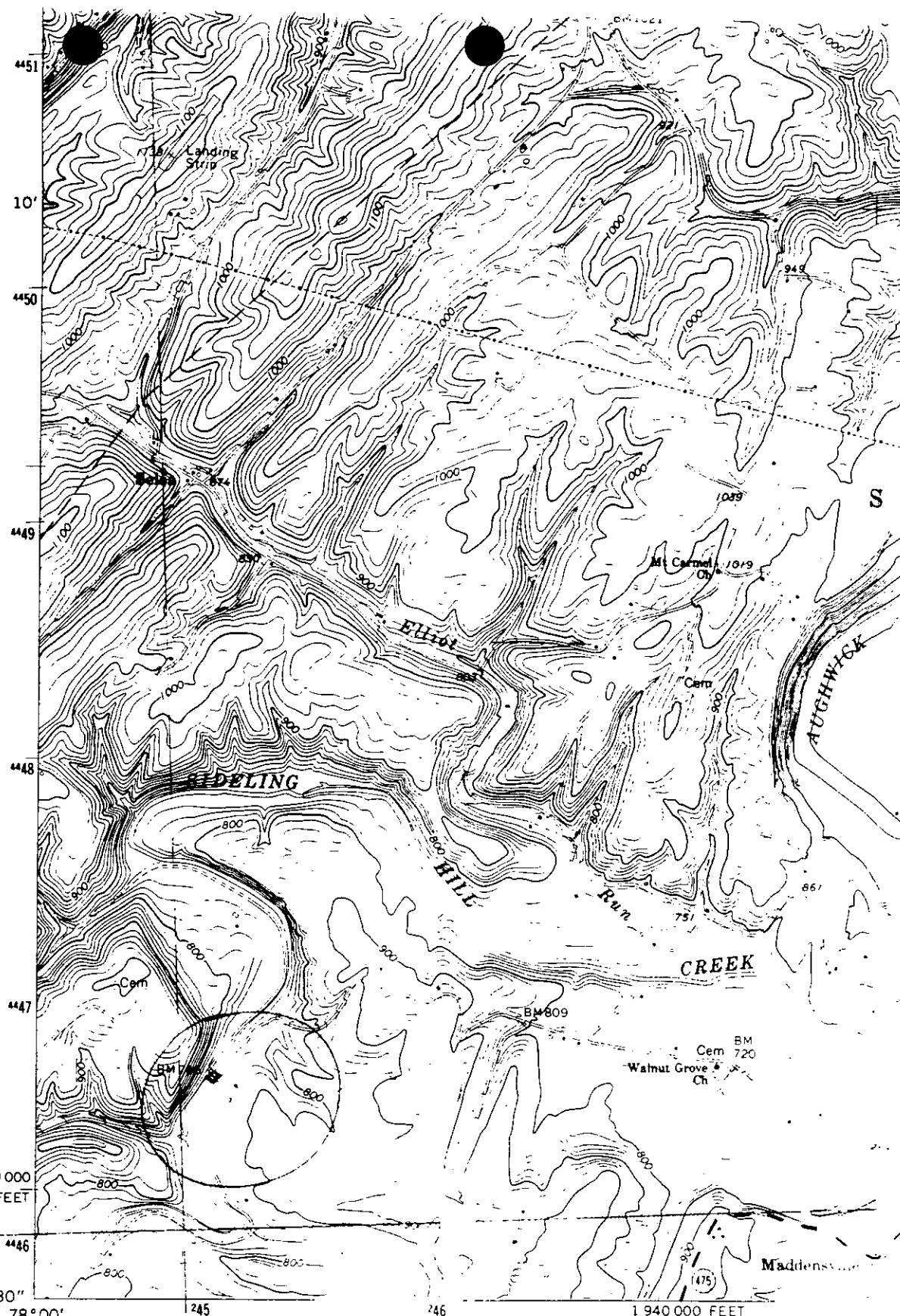
Section number 11 Page 1

---

This nomination contains material taken directly from the unpublished report prepared in 1988 for the Historic American Engineering Record (see Bibliographical References).

The author of that report, Nancy Shedd, is a major contributor to the text of this nomination although not the preparer.





FREHN BRIDGE  
 HUMPHREYS CO.  
 CRBIA VIA QUAD  
 ZONE 18  
 245125 4446640

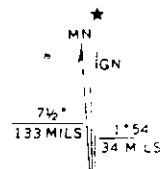
290 000  
FEET

44°07'30"  
78°00'

1 940 000 FEET  
10 MI TO U.S.

(HUSTONTOWN)  
 5384 II SE

Mapped, edited, and published by the Geological Survey  
 Control by USGS and USC&GS  
 Topography by photogrammetric methods from aerial  
 photographs taken 1966. Field checked 1966  
 Polyconic projection. 1927 North American datum  
 10,000-foot grid based on Pennsylvania coordinate system, south zone  
 1000-meter Universal Transverse Mercator grid ticks  
 zone 18, shown in blue  
 Fine red dashed lines indicate selected fence and field lines where  
 generally visible on aerial photographs. This information is unchecked



UTM GRID AND 1973 MAGNETIC  
 DECLINATION AT CENTER OF SHEET