

United States Department of the Interior
National Park Service

NATIONAL REGISTER OF HISTORIC PLACES
REGISTRATION FORM

=====

1. Name of Property

=====

historic name: Corbin Bridge

other name/site number: Huntingdon County Bridge #20

=====

2. Location

=====

street & number: 2 mi. southeast of Huntingdon on Township Road 428

not for publication: N/A

city/town: Juniata Township

vicinity: N/A

state: PA county: Huntingdon code: 061

zip code: 16652

=====

3. Classification

=====

Ownership of Property: Public

Category of Property: Structure (Bridge)

Number of Resources within Property:

Contributing	Noncontributing	
_____	_____	buildings
_____	_____	sites
_____	_____	structures
_____	_____	objects
_____	_____	0 Total
1		
1		

Number of contributing resources previously listed in the National Register: 0

Name of related multiple property listing: Industrial Resources of
Huntingdon County

4. State/Federal Agency Certification

As the designated authority under the National Historic Preservation Act of 1986, as amended, I hereby certify that this nomination request for determination of eligibility meets the documentation standards for registering properties in the National Register of Historic Places and meets the procedural and professional requirements set forth in 36 CFR Part 60. In my opinion, the property meets does not meet the National Register Criteria. See continuation sheet.

Signature of certifying official Date

State or Federal agency and bureau

In my opinion, the property meets does not meet the National Register criteria. See continuation sheet.

Signature of commenting or other official Date

State or Federal agency and bureau

5. National Park Service Certification

I, hereby certify that this property is:

- entered in the National Register See continuation sheet.
determined eligible for the National Register See continuation sheet.
determined not eligible for the National Register
removed from the National Register
other (explain):

Signature of Keeper Date of Action

6. Function or Use

Historic: Transportation Sub: Road-Related
Current : Transportation Sub: Road-Related

7. Description

Architectural Classification:

Other

Other Description: Suspension Bridge

Materials: foundation stone roof walls other metal

Describe present and historic physical appearance. X See continuation sheet.

8. Statement of Significance

Certifying official has considered the significance of this property in relation to other properties: local

Applicable National Register Criteria: C

Criteria Considerations (Exceptions) :

Areas of Significance: 110 Engineering

Period(s) of Significance: 1937

Significant Dates : 1937

Years of Alterations: 1972

Significant Person(s): N/A

Cultural Affiliation: N/A

Architect/Builder: B Reading Steel Products, Inc.

State significance of property, and justify criteria, criteria considerations, and areas and periods of significance noted above. X See continuation sheet.

9. Major Bibliographical References

See continuation sheet.

Previous documentation on file (NPS):

- preliminary determination of individual listing (36 CFR 67) has been requested.
- previously listed in the National Register
- previously determined eligible by the National Register
- designated a National Historic Landmark
- recorded by Historic American Buildings Survey # _____
- recorded by Historic American Engineering Record # PA 061.041

Primary Location of Additional Data:

- State historic preservation office
- Other state agency
- Federal agency
- Local government
- University
- Other -- Specify Repository: county transportation department

10. Geographical Data

Acreage of Property: less than 1 acre

UTM References: Zone Easting Northing Zone Easting Northing

A	18	247020	4482280	B	_____	_____	_____
C	_____	_____	_____	D	_____	_____	_____

____ See continuation sheet.

Verbal Boundary Description: ____ See continuation sheet.

The nominated property consists of a 322 feet long by 37 feet wide rectangle whose vertices coincide with the outside corners of the bridge's wing walls, and includes only bridge superstructure and substructure.

Boundary Justification: ____ See continuation sheet.

The boundaries include the entire nominated structure.

11. Form Prepared By

Name/Title: Deborah L. Suciu - Historic Preservation Specialist

Organization: PHMC - BHP

Date: September 1989

Street & Number: Box 1026 State Museum

Telephone: (717) 783-5796

City or Town: Harrisburg

State: PA ZIP: 17102-1026

United States Department of the Interior
National Park Service

NATIONAL REGISTER OF HISTORIC PLACES
CONTINUATION SHEET

Section number 7

Corbin Bridge Page #2

=====

DESCRIPTION OF APPEARANCE:

Located on the Raystown Branch, one half mile west of its junction with the Juniata River, this one lane, single-span, light weight suspension bridge is 322 feet long, with a 12.5-foot-wide deck. Its two-and-three-eighth-inch prestressed wire rope cables, manufactured by Roebling & Son of Trenton, New Jersey, are supported on 39-foot tall steel towers and anchored in concrete deadmen. The bridge is stiffened by a double intersecting Warren truss and has a macadam-paved wood deck. High cut-stone and concrete abutments with wings support fill at the bridge approaches. The abutments appear to predate the bridge.

The bridge was designed to carry a ten-ton weight limit, which was reduced to seven tons in 1972 when a macadam surface was added to the deck, which increased the weight of the bridge itself. Serving one farm, a small number of year-round residences, and a cluster of vacation cottages along the Juniata, the bridge carries only a moderate amount of traffic and is not usually subjected to particularly heavy loads. According to a recent inspection report, an excessive load in 1980 buckled the east truss, causing the weight limit to be set temporarily at three tons. Repair of the truss in 1981 permitted the seven-ton limit to be restored. The damage was so slight or so well repaired that it is undistinguishable.

United States Department of the Interior
National Park Service

NATIONAL REGISTER OF HISTORIC PLACES
CONTINUATION SHEET

Section number 8

Corbin Bridge Page #2

=====

SIGNIFICANCE:

Huntingdon County Bridge No. 20, or Corbin Bridge, was constructed in 1937 to replace a bridge swept away when a Penelec hydro-electric dam on the Raystown Branch gave way in the 1936 St. Patrick's Day flood. County bridge records state that the bridge was fabricated by Reading Steel Products, Inc. The bridge design is highly unusual for the area: it is the only suspension road bridge in the PennDOT district which includes Huntingdon, Blair, Cambria, Somerset, Bedford and Fulton Counties. It may be unique in a far wider area, according to PennDOT employees familiar with bridges in the region.

Corbin Bridge is the only road suspension bridge in Huntingdon County. Its integrity makes it a fine representative of an early twentieth century suspension bridge in the county. It replaced an early bridge of unknown design. It is not known why the suspension design was chosen. Corbin Bridge was evaluated on a local level.

United States Department of the Interior
National Park Service

NATIONAL REGISTER OF HISTORIC PLACES
CONTINUATION SHEET

Section number 9

Corbin Bridge Page #2

=====

SOURCES:

Africa Engineering. Bridge Inspection Report, 1987.

Davis, J. Dain. PennDOT District 9 Office, Hollidaysburg, Pa.
Interview,
26 August 1988.

Huntingdon County Bridge Office. Bridge files.

Huntingdon County, Pennsylvania: An Inventory of Historic
Engineering and Industrial Sites, Historic American Building
Survey/Historic American Engineering Record, National Park
Service(unpublished, 1988).

Shedd, Nancy S. HAER consultant 1988, President Huntingdon County
Historical Society, interviews 1988-1989.

Souvenir Historical Book, Sesqui-Centennial Celebration of
Huntingdon County Pennsylvania (Huntingdon County Historical
Society, 1937), p. 31. [Photo of Raystown Dam after 1936 flood].

United States Department of the Interior
National Park Service

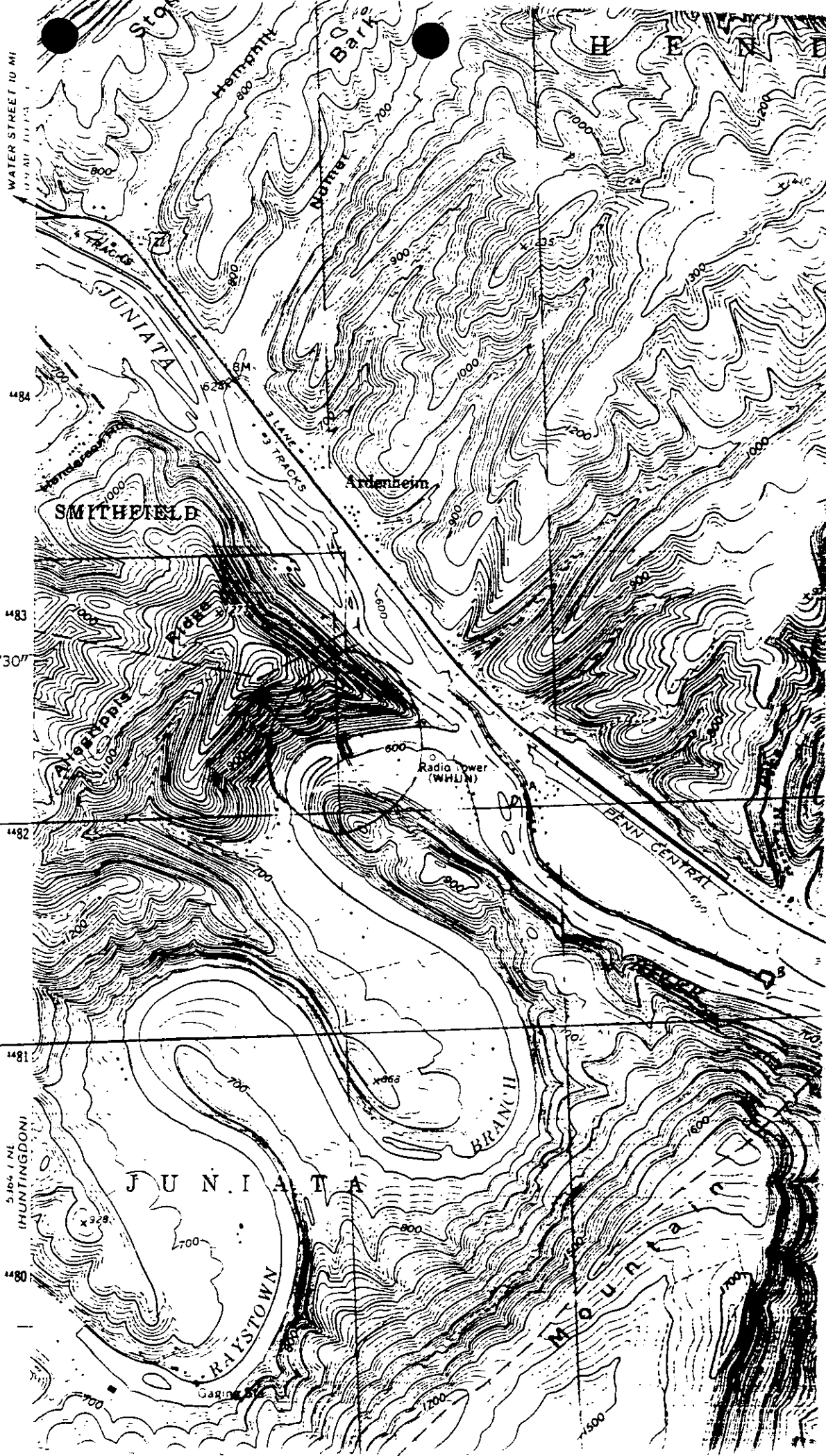
National Register of Historic Places
Continuation Sheet

Corbin Bridge

Section number 11 Page 1

This nomination contains material taken directly from the unpublished report prepared in 1988 for the Historic American Engineering Record (see Bibliographical References).

The author of that report, Nancy Shedd, is a major contributor to the text of this nomination although not the preparer.



CORBIN BRIDGE
 HUNTINGDON CO.
 MOUNT UNION QUAD
 ZONE 1B
 E 247020 N 4482250

PACANAL LOCK & FEEDER
 HUNTINGDON CO.
 MOUNT UNION QUAD
 ZONE 1B

E 247855	N 4482060	2
248235	4481190	3
248595	4481130	4
247945	4482060	5

27'30"

5.164 1 MI
 (HUNTINGDON)

4480

4481

4482

4483

4484