

United States Department of the Interior
National Park Service

NATIONAL REGISTER OF HISTORIC PLACES
REGISTRATION FORM

=====

1. Name of Property

=====

historic name: Runk Bridge

other name/site number: Huntingdon County Bridge #9

=====

2. Location

=====

street & number: 1 mi. S of Shirleysburg, 0.25 mi. W of U.S. Route 522

not for publication: N/A

city/town: Shirleysburg (Shirley Township)

vicinity: N/A

state: PA county: Huntingdon code: 061

zip code: 17066

=====

3. Classification

=====

Ownership of Property: Public - Local

Category of Property: Structure (Bridge)

Number of Resources within Property:

| Contributing | Noncontributing | |
|--------------|-----------------|------------|
| _____ | _____ | buildings |
| _____ | _____ | sites |
| _____ | _____ | structures |
| _____ | _____ | objects |
| _____ | _____ | 0 Total |
| 1 | | |
| 1 | | |

Number of contributing resources previously listed in the National Register: 0

Name of related multiple property listing: Industrial Resources of
Huntingdon County

4. State/Federal Agency Certification

As the designated authority under the National Historic Preservation Act of 1986, as amended, I hereby certify that this nomination request for determination of eligibility meets the documentation standards for registering properties in the National Register of Historic Places and meets the procedural and professional requirements set forth in 36 CFR Part 60. In my opinion, the property meets does not meet the National Register Criteria. See continuation sheet.

Signature of certifying official Date

State or Federal agency and bureau

In my opinion, the property meets does not meet the National Register criteria. See continuation sheet.

Signature of commenting or other official Date

State or Federal agency and bureau

5. National Park Service Certification

I, hereby certify that this property is:

- entered in the National Register See continuation sheet.
determined eligible for the National Register See continuation sheet.
determined not eligible for the National Register
removed from the National Register
other (explain):

Signature of Keeper Date of Action

6. Function or Use

Historic: Transportation Sub: Road-Related
Current : Transportation Sub: Road-Related

7. Description

Architectural Classification:

Other

Other Description: Pratt Truss Bridge

Materials: foundation N/A roof N/A
walls N/A other steel

Describe present and historic physical appearance. X See continuation sheet.

8. Statement of Significance

Certifying official has considered the significance of this property in relation to other properties: locally.

Applicable National Register Criteria: C

Criteria Considerations (Exceptions) :

Areas of Significance: Engineering

Period(s) of Significance: 1889

Significant Dates : 1889

Years of Alterations:

Significant Person(s): N/A

Cultural Affiliation: N/A

Architect/Builder: B Pittsburgh Bridge Company

State significance of property, and justify criteria, criteria considerations, and areas and periods of significance noted above. X See continuation sheet.

9. Major Bibliographical References

See continuation sheet.

Previous documentation on file (NPS):

- preliminary determination of individual listing (36 CFR 67) has been requested.
- previously listed in the National Register
- previously determined eligible by the National Register
- designated a National Historic Landmark
- recorded by Historic American Buildings Survey # _____
- recorded by Historic American Engineering Record # PA 061.040

Primary Location of Additional Data:

- State historic preservation office
- Other state agency
- Federal agency
- Local government
- University
- Other -- Specify Repository: County Highway Department

10. Geographical Data

Acreage of Property: less than 1 acre

UTM References: Zone Easting Northing Zone Easting Northing

| | | | | | | | |
|---|-------|--------|---------|---|-------|-------|-------|
| A | 18 | 254520 | 4462390 | B | _____ | _____ | _____ |
| C | _____ | _____ | _____ | D | _____ | _____ | _____ |

___ See continuation sheet.

Verbal Boundary Description: ___ See continuation sheet.

The nominated property consists of a 267.5 feet long by 33 feet wide rectangle whose vertices coincide with the outside corners of the bridge's wing walls, and includes only bridge superstructure and substructure.

Boundary Justification: ___ See continuation sheet.

The boundaries include the entire nominated structure.

11. Form Prepared By

Name/Title: Deborah L. Suciu - Historic Preservation Specialist

Organization: PHMC - BHP

Date: August 1989

Street & Number: Box 1026 State Museum

Telephone: (717) 783-5796

City or Town: Harrisburg

State: PA ZIP: 17108-1026

United States Department of the Interior
National Park Service

NATIONAL REGISTER OF HISTORIC PLACES
CONTINUATION SHEET

Section number 7

Runk Bridge

Page #2

=====

DESCRIPTION OF APPEARANCE:

This two-span, pin connected, steel Pratt through truss bridge has a total length of 267.5 feet. Wooden stringers support a 13-foot-wide yellow pine deck that carries Township Road 373 over Aughwick Creek. The bridge has one concrete pier and high concrete abutments covered with lime and cement plaster. The western extremity of the bridge faces the intersection of Township Road 373 with Township Road 380 in a very rural part of the county. Located a mile and a half south of Shirleysburg, the bridge is a highly visible landmark west of both U.S. Route 522 and the currently active tourist section of the East Broad Top Railroad, a National Historic Landmark.

United States Department of the Interior
National Park Service

NATIONAL REGISTER OF HISTORIC PLACES
CONTINUATION SHEET

Section number 8

Runk Bridge

Page #2

SIGNIFICANCE:

County bridge records indicate that Bridge No. 9, or Runk Bridge, was constructed in 1889 by the Pittsburgh Bridge Company. This is a fine example of one of the county's less than ten remaining pin-connected Pratt through truss bridges built in the late 1800's. The bridge has been well maintained and retains its integrity of material, design and setting. Runk Bridge has been evaluated at a local level and is important in the area of engineering. It retains integrity of material, design and setting.

United States Department of the Interior
National Park Service

NATIONAL REGISTER OF HISTORIC PLACES
CONTINUATION SHEET

Section number 9

Runk Bridge

Page #2

SOURCES:

Africa Engineering. Bridge Inspection Report, 1987.

Huntingdon County, Pennsylvania: An Inventory of Historic Engineering and Industrial Sites, Historic American Building Survey/Historic American Engineering Record, National Park Service(unpublished, 1988).

Huntingdon County Bridge Office. Bridge Files.

Reflections (Mount Union Bicentennial Committee, 1976), p. 72.
[Photographs of County Line Bridge at Mount Union]

Shedd, Nancy S. HAER consultant 1988, President Huntingdon County Historical Society, interviews 1988-1989.

**United States Department of the Interior
National Park Service**

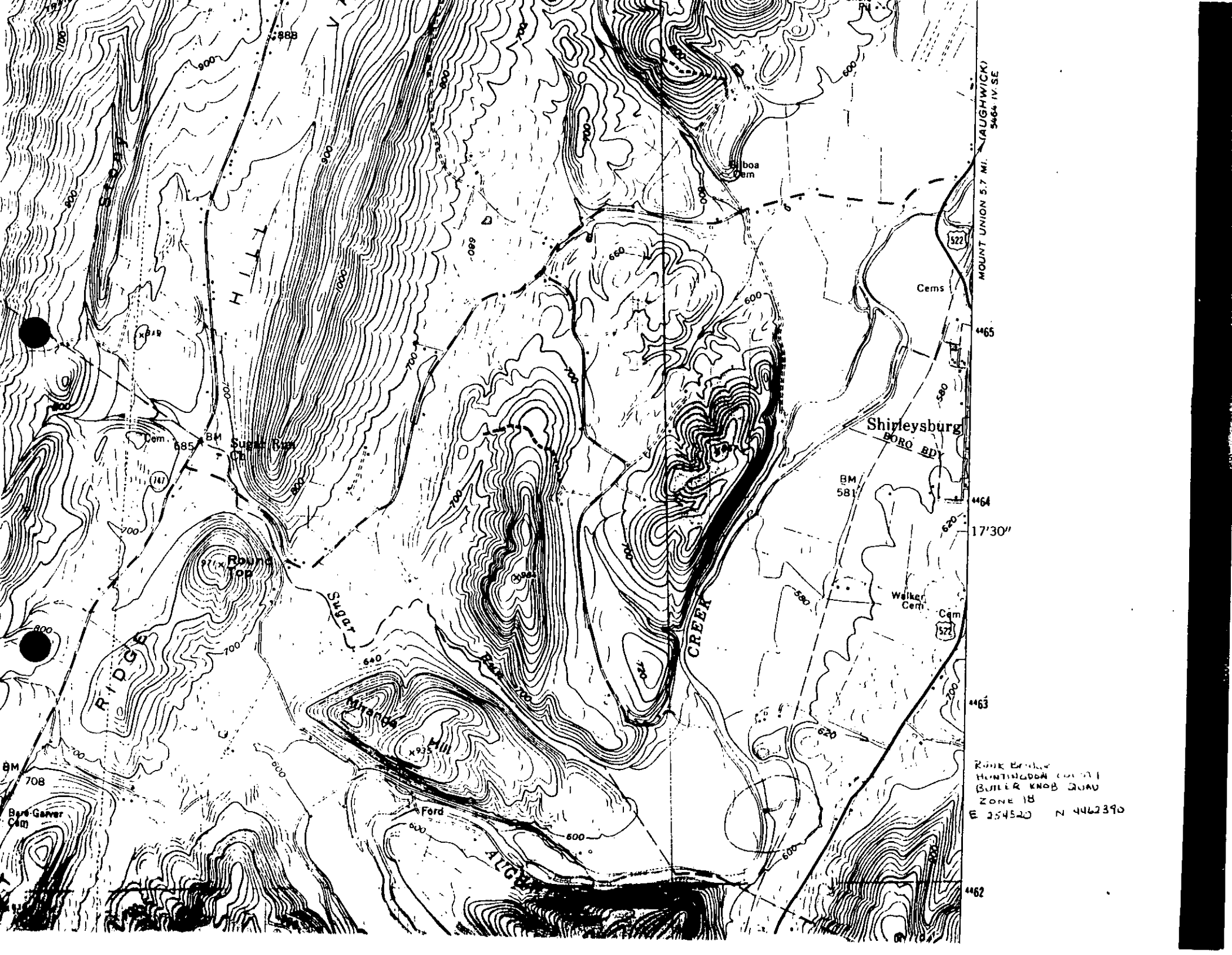
**National Register of Historic Places
Continuation Sheet**

Runk Bridge

Section number 11 Page 1

This nomination contains material taken directly from the unpublished report prepared in 1988 for the Historic American Engineering Record (see Bibliographical References).

The author of that report, Nancy Shedd, is a major contributor to the text of this nomination although not the preparer.



MOUNT UNION 5.7 MI. (AUGHWICK) 5464 IV. SE

4465

4464

17°30''

4463

4462

ROUND EMERY
HUNTINGDON COUNTY
BULLER KNOB QUAD
ZONE 18
E 254520 N 4462390