

PENNSYLVANIA HISTORIC RESOURCE SURVEY FORM
 BUREAU FOR HISTORIC PRESERVATION Box 1026
 PA HISTORICAL & MUSEUM COMMISSION Harrisburg, PA 17120

7. Local survey organization

8. property owners name and address

School District of Philadelphia
 21st & Winter Streets
 Philadelphia, Pennsylvania 19103

9. tax parcel number / other number

11. status (other surveys, lists etc.)

10. U.T.M. Zone Easting Northing
 18 418164 1110
 414314 7810

usgs sheet:

12. classification
 site () structure () object ()
 building () Thematic
 in N.R. district yes () no ()

13. date(s) (how determined)

1929-1930
 14. period 1921-1940

15. style, design or folk type
 Academic Gothic

19. original use School
 20. present use School

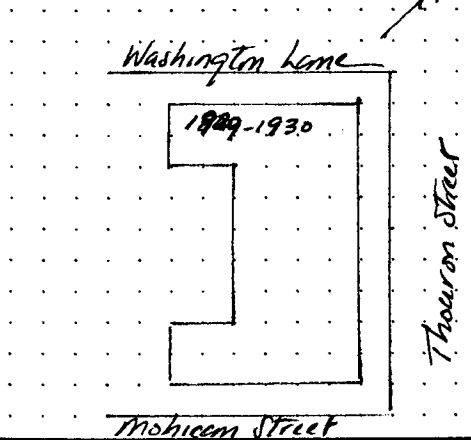
16. architect or engineer
 Irwin T. Catharine

17. contractor or builder
unhucoa

18. primary building mat./construction
 Brick with stone and
 terra cotta trimmings

21. condition Excellent
 22. integrity Excellent

23. site plan with north arrow



BLACK AND WHITE PRINT(S)
 3 1/2" x 5" enlargement or medium format contact
 note location of negative in block 24.

24. photo notation

25. file/location

26. brief description (note unusual features, integrity, environment, threats and associated buildings)

See reverse side

27. history, significance and/or background

See reverse side

28. sources of information

See reverse side

29. prepared by:

Jefferson M. Moak

30. date

revision(s)

5-20-87

(continue on back if necessary)

1. County Philadelphia
 2. municipality Philadelphia
 3. street address or specific location 1800-1850 E. Washington Lane
 4. survey code
 5. present name Samuel W. Pennypacker School
 6. other name (historic name if any) N/A

3. ADDRESS: Washington Lane, 1800-1850 E.

5. NAME: Pennypacker, Samuel W., School

6. FORMER NAME:

13. DATES: 1929-1930

ADDITIONS:

DESCRIPTION: A 3-story, 8-register, brick school set upon a raised basement. The outside registers are blank, featuring a large diapered brick panel. The central four registers each have five windows in an 1-3-1 arrangement and are separated from each other by brick piers containing terra cotta capitals above the third floor window line. The registers next to the outside contain ground floor stone arched entryways, a stone 2-story bay at the second and third floors, paired windows within a single opening at the fourth level and a crennated battlement at top marked by four small towers at each corner. Generally, the details of the building follow those introduced in 1922 with the John Story Jenks and Andrew Morrison Schools, but brought to full flower with this design.

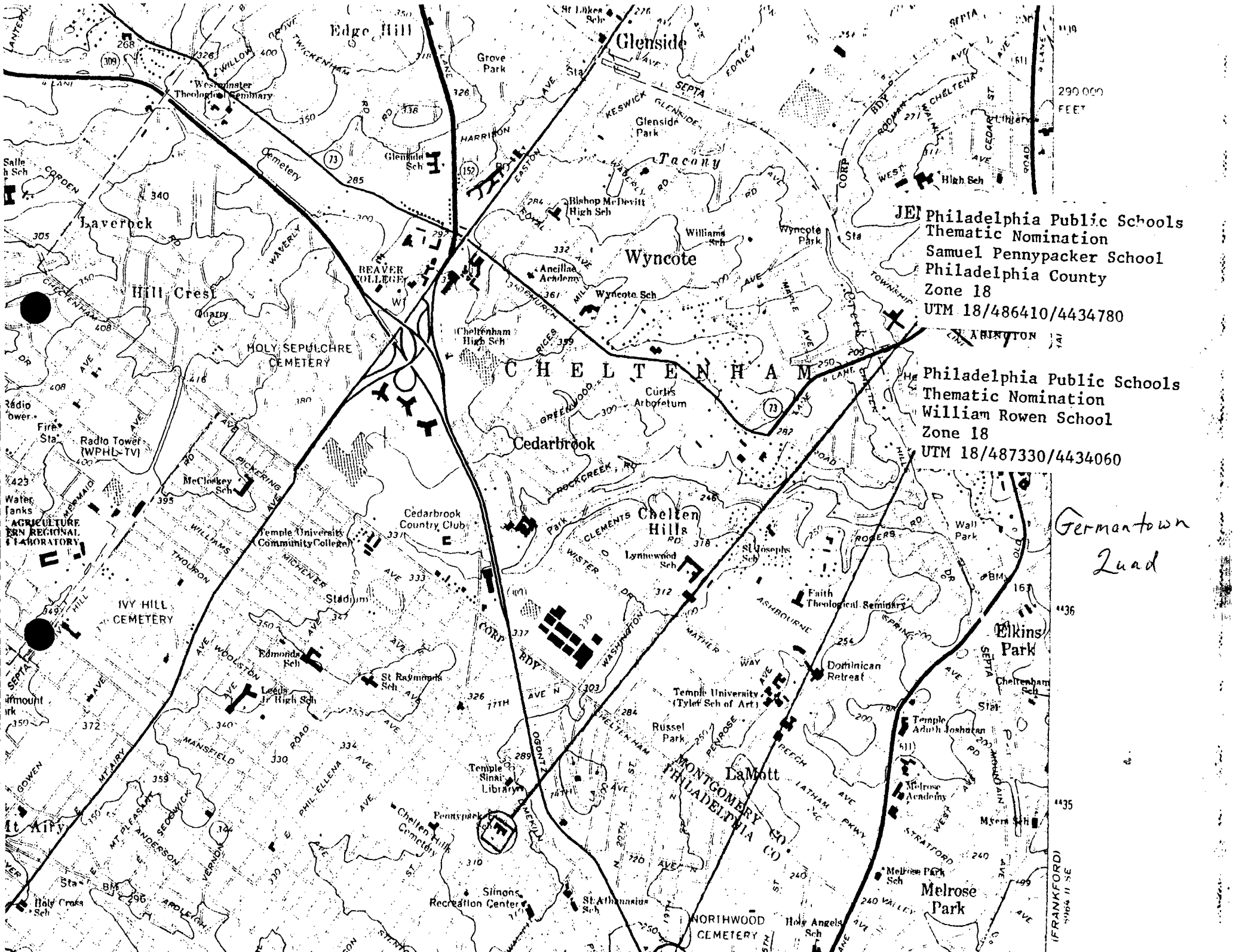
HISTORY/SIGN.: The School Board records contain a duplicate in School Board Type Numbers. Number 144 is applied to both the Art Deco Allen, Barton, Finletter, Forrest, Hopkinson and Sullivan Schools and to the Academic Gothic Creighton and Pennypacker Schools. In 1930, the Academic Gothic design had its designation to 144-E when it was applied to the Carnell School. The floor plans may actually have been the same, but the exterior details were certainly distinct in the two designs, something which ordinarily would call for two separate Type Numbers. It is interesting to note that, with the exception of the Pennypacker School, all of the schools of this type were erected in the Northeast and Juniata Park sections of the city. These Academic Gothic buildings were among the last designed by Catharine in this style.

28. SOURCES: Edmunds, Chronological List of Public School Buildings, 1818-1934 School Board, "New School Buildings Under Contract"

EVALUATION: The architectural merits of this building warrants inclusion onto the National Register of Historic Places as part of the Philadelphia Public Schools Thematic District.

EVALUATION

EVALUATOR(S)



Philadelphia Public Schools
 Thematic Nomination
 Samuel Pennypacker School
 Philadelphia County
 Zone 18
 UTM 18/486410/4434780

Philadelphia Public Schools
 Thematic Nomination
 William Rowen School
 Zone 18
 UTM 18/487330/4434060

Germantown
 Quad

(FRANKFORD)
 11064 11 SE