

7. Local survey organization

1. County
 5. present name

8. property owners name and address

9. tax parcel number/other number
 11. status (other surveys, lists etc.)

10. U.T.M. Zone easting
 usgs sheet: northing

12. classification
 site () structure () object ()
 building () district ()
 Thematic

13. date(s) (how determined)
 1901

15. style, design or folk type
 Colonial Rev.

19. original use School
 20. present use School

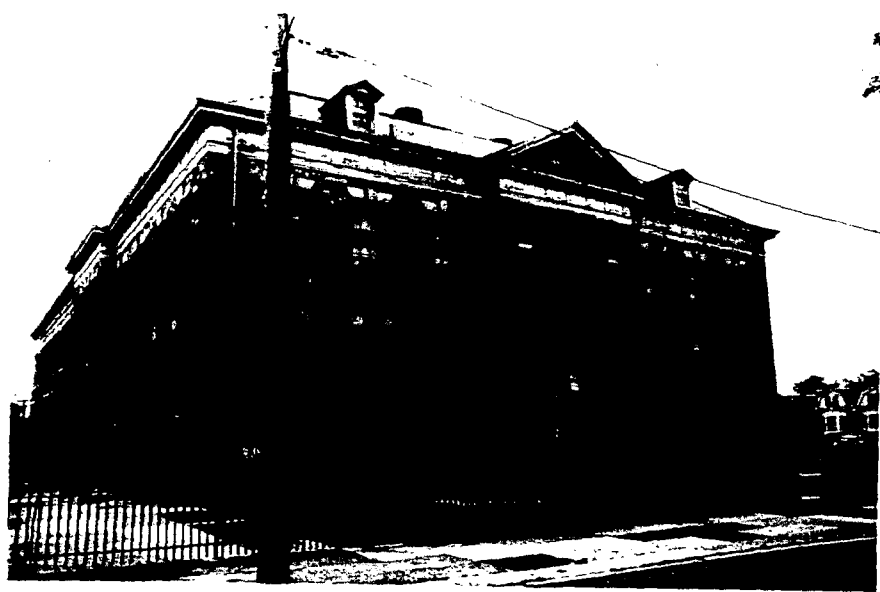
16. architect or engineer
 Andrew Sauer

17. contractor or builder
 W.J. Smith

18. primary building mat./construc.
 Stone

21. condition Good
 22. integrity Good

23. site plan with north arrow



24. photo notation

25. file/location

26. brief description (note unusual features, integrity, environment, threats and associated buildings)

27. history, significance and/or background

USE THIS COPY FOR DUPLICATING

(continue on back if necessary)

28. sources of information

29. prepared by:

Computer Coding (BHP Survey Grantees Must Complete)

30. date revision(s)

31. county _____ 32. style _____
 33. construction material _____ 34. roof _____
 35. design type _____
 36. historic function _____
 37. construction feature _____ 38. ext. walls _____ 39. plan _____
 40. facade width _____ 41. roof material _____ 42. stories _____ 43. depth _____
 44. ext. design _____
 45. int. design _____

2. municipality
 3. street address or specific location
 4. survey code
 6. other name (historic name if any)
 OLNEY
 1700 + 130th St.

Physical Description

Constructed of coursed roughcast ashlar with smooth dressed limestone trim, the Olney School is a two story 7 bay hip roofed Colonial Revival structure with partial basement. Detailing begins with a stone watertable pierced by basement windows with protective grilles and capped by a limestone dripcourse. A projecting pedimented center bay marks the main entrance. three stone steps lead to the center entrance, a modern metal door. An arched limestone surround with keystone is framed by smooth dressed Doric columns supporting a pediment. Small windows with splayed lintels flank the entrance. A second floor balcony and double hung 9 over 9 sash with decorative hood is centered over the entrance, flanked by small double hung sash with smooth dressed splayed lintels and sills. A pediment with molded wood cornice caps the entrance bay. Fenestration follows a regular pattern of 9 over 9 double hung sash defined by limestone sills and splayed lintels with pronounced keystones. Crowning the building is a wide fascia band with triglyphs, capped by molded wood cornice. The hipped roof with platform is pierced by pedimented dormers with 6 over 6 double hung sash.

Statement of Significance

An exceptionally intact example of Georgian Revival institutional architecture, the Olney School, at the corner of Tabor Road and Water Streets epitomizes turn of the century school design in Philadelphia. Domestic in scale, the building displays the attention to proportions, balance, massing and detailing which characterized the Georgian Revival in America. A style well suited to institutional buildings, the Georgian Revival reflected a period of prosperity and civic pride in the country. The building stands as one of the few schools designed by architect Andrew Sauer during his short tenure with the School Board.

EVALUATION

EVALUATOR(S)

Olney School

Physical Description

Constructed of rough cast, coursed ashlar with smooth dressed limestone trim, the Olney School is a two story, seven bay hipped roof, Colonial Revival structure. The detailing begins with a stone watertable pierced by basement windows with protective grilles and capped by a limestone dripcourse. A projecting pedimented center bay marks the main entrance. Three stone steps lead to the center entrance, a modern metal door. An arched limestone surround with keystone is framed by smooth dressed Doric columns supporting a pediment. Small windows with splayed lintels flank the entrance. Above is a single window, partially closed down, with a decorative hood and iron balcony. The building fenestration pattern is regular with double hung nine over nine sash with splayed stone lintels with keystones. A projecting, pedimented frontispiece with molded wood cornice defines the entrance bay. Crowning the building is a wide fascia band with triglyphs, capped by a molded wood cornice. The hipped roof is pierced by pedimented dormers with six over six double hung sash.

Statement of Significance

An exceptionally intact example of Georgian Revival, institutional architecture, the Olney School, epitomizes turn of the century school design in Philadelphia. Domestic in scale, the building displays the attention to proportion, balance, massing and detailing which characterized the Georgian Revival style in America. A style well suited to institutional buildings, the Georgian Revival reflected a period of prosperity and civic pride in the country. The building stands as one of the few schools designed by architect Andrew Sauer during his short tenure with the School Board. In his designs, Sauer tended to follow the late nineteenth century Revival styles adopted by his predecessor, Joseph Anshutz, during the 1890s.

Thus the Olney School is important as a fine example of Georgian Revival architecture executed by Andrew Sauer at the turn of the century

area of significance: architecture

verbal boundary description

The nominated property consists of Philadelphia County lot 8862440 which contains the school and its contiguous grounds.

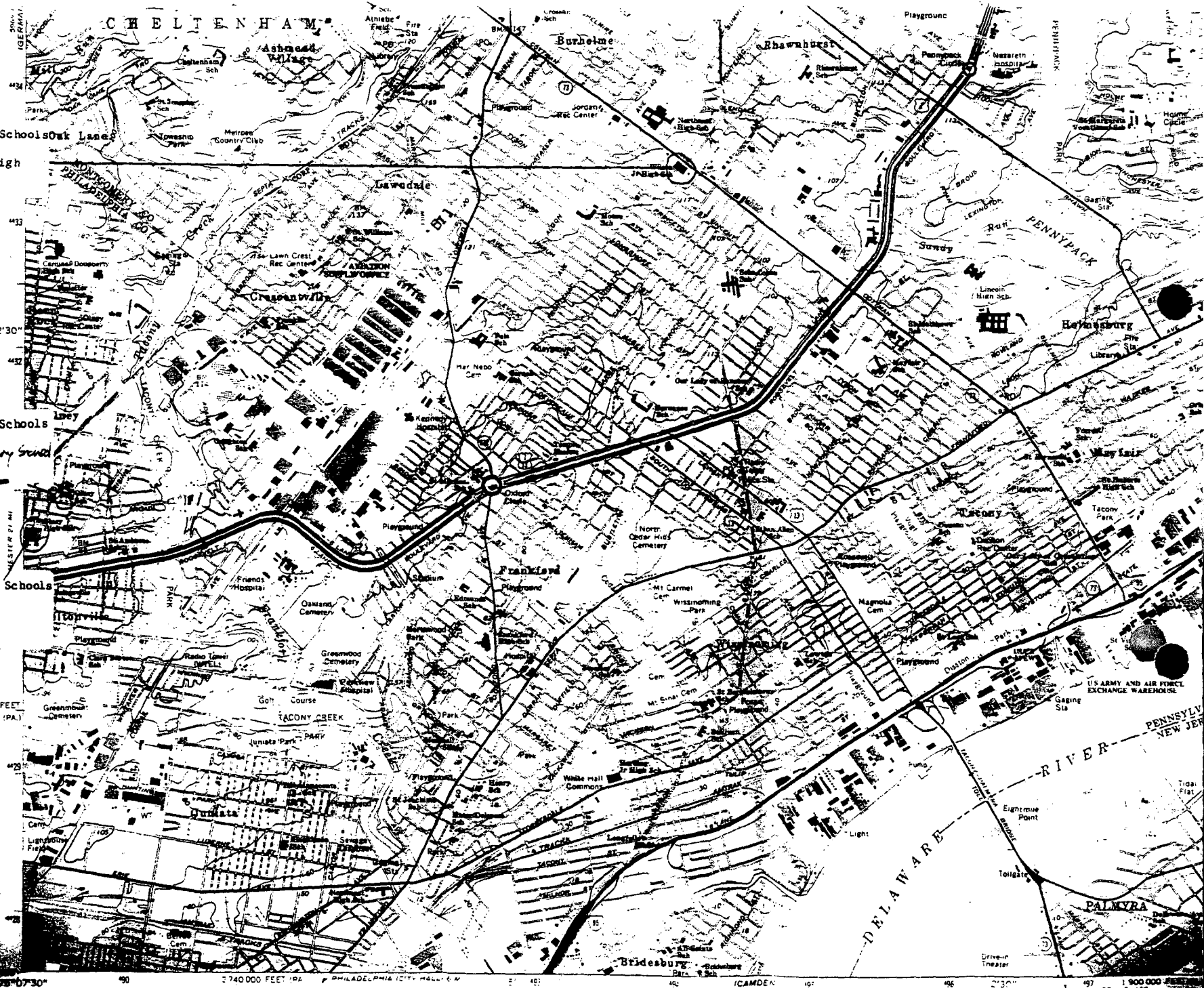
EVALUATION

EVALUATOR(S)

Philadelphia Public Schools
Philadelphia County
Woodrow Wilson Jr. High
18494 200N4433 240

Philadelphia Public Schools
Philadelphia County
Ciney School - Elementary School
18489 700N4430 940

Philadelphia Public Schools
Philadelphia County
Ciney High School
18489 460N4430 600



260 000 FEET
(PA.)