

7. Local survey organization

8. property owners name and address

9. tax parcel number/other number

10. U.T.M. Zone easting
 northing
 usgs sheet:

11. status (other surveys, lists etc.)

12. classification
 site () structure () object ()
 building () district ()
Thematic

13. date(s) (how determined)

14. period
1873

15. style, design or folk type

Italianate

19. original use
School

20. present use
Commerc.

16. architect or engineer

L. Esler

17. contractor or builder

-

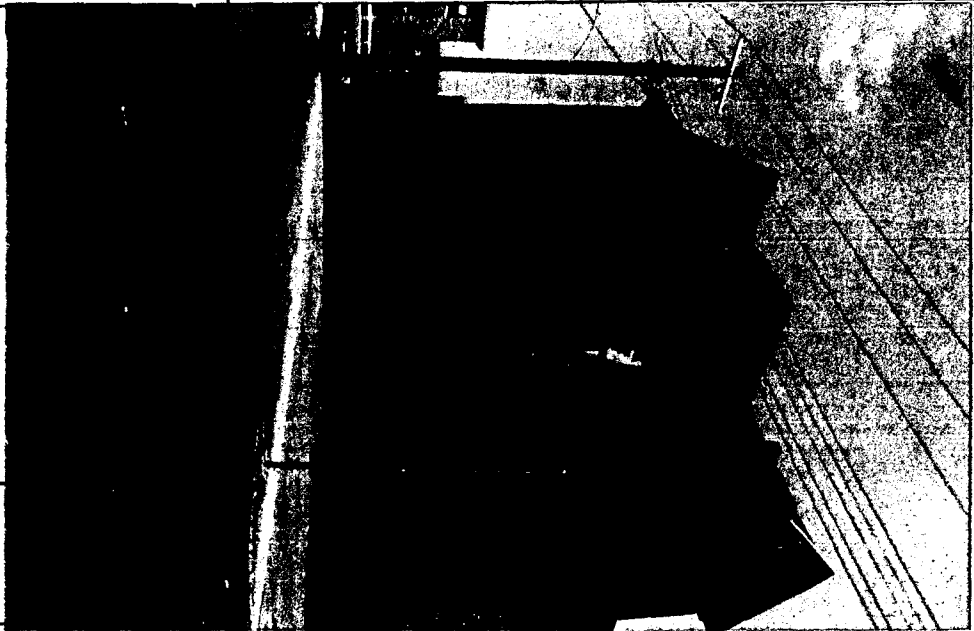
18. primary building mat./construc.

Stone

21. condition
Fair

22. integrity
Fair

23. site plan with north arrow



24. photo notation

25. file/location

26. brief description (note unusual features, integrity, environment, threats and associated buildings)

(continue on back if necessary)

27. history, significance and/or background

**USE THIS COPY
 FOR DUPLICATING**

(continue on back if necessary)

28. sources of information

(continue on back if necessary)

29. prepared by:

Computer Coding (BHP Survey Grantees Must Complete)

30. date revision(s)

31. county _____ 32. style _____

32. construction material _____ 34. roof _____

35. design type _____

36. historic function _____

37. construction feature _____ 38. ext. walls _____ 39. plan _____

40. facade width _____ 41. roof material _____ 42. stories _____ 43. depth _____

44. ext. design _____

45. int. design _____

1. County

2. municipality

3. street address or specific location

4. survey date

5. other name (historic name if any)

UNP. 5/5/01

David Farrugut School

Physical Description

Rising three stories in height and spanning five bays in width, the Farrugut School is constructed of stone with brownstone and limestone trim. The detailing begins with a stone watertable pierced by basement window openings, now sealed. A brownstone drip course caps the basement. An enclosed, later, corner entrance bay, now sealed, featured a copper cornice. The building is highlighted by a projecting cross gabled two bay section featuring bands of three windows with six over six sash trimmed with limestone lintels and sills. Brownstone belt courses span above the first and second floors. The gable wall is capped by a vented ocular window set into the cross gable. Flanking end bays repeat the fenestration and trim patterns of the center bay. The building is capped by a copper cornice. The side elevations feature modillioned cross gables with returns, pierced by ocular windows. A one story modern addition projects from the side of the building.

Statement of Significance

Built in 1873 with a 1915 addition, the Farrugut School stands as a rare surviving example of school design in the 1870's. The building was designed by Louis Esler, appointed the first Building Supervisor fo the Office of Building in 1867. The office was created in response to the demand for new schools in the wake of the 1854 consolidation of Philadelphia. The office was responsible for a major boom in school building activity in the 1860's and '70's. Holding to the traditional square plan with projecting stair wings, the building reflects the slow pace of change in nineteenth century school design. The design is essentially imitative of the "Sloan Plan". While several alterations have been made, the building retains much of its original Victorian character and detailing.

Thus the Farragut School is significant as a rare survivor among early schools that utilized the Sloan plan.

area of significance: architecture

verbal boundary description

The nominated property consists of Philadelphia County lot 1910957 which contains the school and its contiguous grounds.

EVALUATION

EVALUATOR(S)

UNITED STATES
DEPARTMENT OF THE INTERIOR
GEOLOGICAL SURVEY

Philadelphia Public Schools
Philadelphia County
Spring Garden School #2
12th & Meion St.
182886 620N4423 660

Philadelphia Public Schools
Philadelphia County
Spring Garden School #1
12th & Odgen St.
182886 660N4424 140

Philadelphia Public Schools
Philadelphia County
W&E Martin Orthopedic Sch.
182885 100N4424 220

Philadelphia Public Schools
Philadelphia County
Lydia Darrah School
182885 820N4424 020

PHILADELPHIA QUADRANGLE
PENNSYLVANIA-NEW JERSEY
7.5 MINUTE SERIES (TOPOGRAPHIC)



Philadelphia Public Schools
Philadelphia County
Randolph Walton School
182884 900N4427 020

Philadelphia Public Schools
Philadelphia County
George Heade School
182885 900N4425 140

Philadelphia Public Schools
Philadelphia County
Verbrook High School
182881 460N4422 540

Philadelphia Public Schools
Philadelphia County
M. Shoemaker Jr. High
182880 480N4424 840

Philadelphia Public Schools
Philadelphia County
William B. Hanna School
182879 800N4424 680

Philadelphia Public Schools
Philadelphia County
George L. Brooks School
182880 020N4424 040

Philadelphia Public Schools
Philadelphia County
Thomas Dunlap
182881 040N4423 440

Philadelphia Public Schools
Philadelphia County
Phil. High School
182880 460N4422 520

Philadelphia Public Schools
Philadelphia County
Elia R. Masterman School
182882 820N4423 460

Philadelphia Public Schools
Philadelphia County
David Landreth School
182884 480N4420 620

Philadelphia Public Schools
Philadelphia County
Weir Mitchell School
182880 880N4420 520

Philadelphia Public Schools
Philadelphia County
Shony Wayne School
182881 660N4419 960

Philadelphia Public Schools
Philadelphia County

Philadelphia Public Schools
Philadelphia County
Daniel Boone School
182888 920N4423 200

Philadelphia Public Schools
Philadelphia County
Edison High School
182887 600N4426 780

Philadelphia Public Schools
Philadelphia County
David Farragut School
182888 420N4426 200

Philadelphia Public Schools
Philadelphia County
William S. Stokely
182884 040N4425 900

Philadelphia Public Schools
Philadelphia County
Paul Lawrence Dunbar
182886 800N4430 600

Philadelphia Public Schools
Philadelphia County
William Penn School
182886 040N4423 660

Philadelphia Public Schools
Philadelphia County
Alexander Dallas Bache
182885 140N4424 220

Philadelphia Public Schools
Philadelphia County
Mifflin School
182887 760N4423 500

Philadelphia Public Schools
Philadelphia County
Fleischer School
182886 340N4423 460

Philadelphia Public Schools
Philadelphia County
Thaddeus Stevens School
182886 340N4423 380

Philadelphia Public Schools
Philadelphia County
Meredith School
182887 100N4420 820

Philadelphia Public Schools
Philadelphia County
J. Sylvester Ramsey School
182886 300N4421 420

Philadelphia Public Schools
Philadelphia County
Samuel J. Randall School
182886 340N4421 120

Philadelphia Public Schools
Philadelphia County
Robert Ralston School
182887 460N4420 960

Philadelphia Public Schools
Philadelphia County
Francis M. Drexel School
182885 220N4421 120

Philadelphia Public Schools
Philadelphia County