

United States Department of the Interior
National Park Service

NATIONAL REGISTER OF HISTORIC PLACES
REGISTRATION FORM

=====

1. Name of Property

=====

historic name: Monroe Furnace

other name/site number: N/A

=====

2. Location

=====

street & number: 6 miles northwest of McAlevys Fort on Rt. 26 at
intersection with Legislative Route 31076

not for publication: N/A

city/town: Barree Township

vicinity: N/A

state: PA county: Huntingdon code: 061

zip code: 16669

=====

3. Classification

=====

Ownership of Property: Public - State

Category of Property: District

Number of Resources within Property:

Contributing	Noncontributing	
_____	_____	buildings
1	_____	sites
1	_____	structures
_____	_____	objects
2	0	Total

Number of contributing resources previously listed in the National Register: 0

Name of related multiple property listing: Industrial Resources of
Huntingdon County

4. State/Federal Agency Certification

As the designated authority under the National Historic Preservation Act of 1986, as amended, I hereby certify that this nomination request for determination of eligibility meets the documentation standards for registering properties in the National Register of Historic Places and meets the procedural and professional requirements set forth in 36 CFR Part 60. In my opinion, the property does not meet the National Register Criteria. See continuation sheet.

Signature of certifying official Date

State or Federal agency and bureau

In my opinion, the property meets does not meet the National Register criteria. See continuation sheet.

Signature of commenting or other official Date

State or Federal agency and bureau

5. National Park Service Certification

I, hereby certify that this property is:

- entered in the National Register See continuation sheet.
determined eligible for the National Register See continuation sheet.
determined not eligible for the National Register
removed from the National Register
other (explain):

Signature of Keeper Date of Action

6. Function or Use

Historic: Industry/Processing/Extract Sub: Manufacturing Facility

Current : Vacant/Not in Use Sub:

7. Description

Architectural Classification:

Other

Other Description: iron plantation

Materials: foundation stone	roof N/A
walls stone	other _____
/	

Describe present and historic physical appearance. X See continuation sheet.

8. Statement of Significance

Certifying official has considered the significance of this property in relation to other properties: locally.

Applicable National Register Criteria: A D

Criteria Considerations (Exceptions) : _____

Areas of Significance: Industry
 Archaeology-Historic Non-Aboriginal

Period(s) of Significance: 1847-1864 -

Significant Dates : 1847 _____

Years of Alterations: _____

Significant Person(s): N/A

Cultural Affiliation: N/A

Architect/Builder: _ unknown

State significance of property, and justify criteria, criteria considerations, and areas and periods of significance noted above. X See continuation sheet.

=====

9. Major Bibliographical References

=====

X See continuation sheet.

Previous documentation on file (NPS):

- preliminary determination of individual listing (36 CFR 67) has been requested.
- previously listed in the National Register
- previously determined eligible by the National Register
- designated a National Historic Landmark
- recorded by Historic American Buildings Survey # _____
- recorded by Historic American Engineering Record # PH 0410764

Primary Location of Additional Data:

- State Historic Preservation Office
- Other state agency
- Federal agency
- Local government
- University
- Other -- Specify Repository: Huntingdon Co. Historical Society

=====

10. Geographical Data

=====

Acreage of Property: 3

UTM References: Zone Easting Northing Zone Easting Northing

A	18	255495	4508825	B	18	255500	4508770
C	18	255315	3408705	D	18	255290	4508740

 See continuation sheet.

Verbal Boundary Description: X See continuation sheet.

Boundary Justification: X See continuation sheet.

=====

11. Form Prepared By

=====

Name/Title: Deborah L. Suciu - Historic Preservation Specialist

Organization: PA Historical & Museum Comm. Date: July 1989

Street & Number: Box 1026 State Museum Telephone: (717)783-5796

City or Town: Harrisburg State: PA ZIP: 17108-1026

United States Department of the Interior
National Park Service

NATIONAL REGISTER OF HISTORIC PLACES
CONTINUATION SHEET

Section number 7

Monroe Furnace Page 2

=====

DESCRIPTION OF APPEARANCE:

Monroe Furnace historic district consists of the remains of the furnace stack, its immediate surroundings and the visible foundation remains of workers housing. The operation was never very large and produced iron for a relatively short period of time. The historic district is located on the southern side of a large mountain and is well overgrown today, the stack being visible to the road only in the winter. It may be found at the intersection of Route 26 and a side road to Mooresville (Legislative Route 31076). The iron blast furnace stack is 30 x 30 feet square at the base and about 20 feet high. It is constructed of cut blocks of native sandstone, with large stones making the corners of the structure and predominating in the walls, infilled with smaller, less carefully shaped stones. The walls and corners are intact except for the lower ten feet of the northeast corner. The perfect alignment of the corner above the collapsed portion witnesses the skill and care taken with the original dry wall construction. The stack has triangular "arches," on three sides: a 14-foot casting arch on the east, a 12-foot tuyere arch on the north, and a small 8 1/2-foot arch on the south. The charging platform was on the slope to the west. When the site is bare in winter, the wheel pit on the north side of the stack is apparent. Ten years ago, the "sow" and "pigs" of the casting troughs could be distinguished in front of the casting arch, but subsequent deposits of cinders from highway drainage ditches have obscured them.

The tumbled stone remains of 14 workers' houses can be discovered along both sides of the road from Monroe Furnace to Mooresville (Legislative Route 31076). Those remains that retain a rectangular shape are identified as foundations while distinct piles of fieldstone are labeled rubble.

United States Department of the Interior
National Park Service

NATIONAL REGISTER OF HISTORIC PLACES
CONTINUATION SHEET

Section number 8

Monroe Furnace Page 2

STATEMENT OF SIGNIFICANCE:

Monroe Furnace Historic District is being nominated under criterion A for its representation of the charcoal iron industry in Huntingdon County. The furnace was established in 1846 and operated sporadically under several owners for about 18 years. Under criteria D, the foundation remains of workers' housing are important for the information they may yield such as the size and spatial arrangement of workers' houses, and the size and development of iron plantations in Huntingdon County. Study of the stack and slag remains immediately surrounding the stack may provide information to explain the ephemeral nature of iron production and its conclusion at the site. This may be accomplished by careful study and comparison of the stack design or chemical analysis of the slag contents. Careful documentation of the entire site remains would provide useful comparative tools when examining other charcoal iron plantations in the Juniata Valley.

Monroe Furnace was established in 1846-47 by General James Irvin, a prominent Centre County ironmaster, who was associated with ten iron works in that county and two in Huntingdon County. Despite his long experience and notable success in the iron business, he was unable to withstand the economic depression of the mid-1850s, and was forced to retire from the iron business in 1857. In 1850, Irvin employed 50 men at Monroe Furnace, producing 958 tons of pig iron valued at \$21,000; but by 1851, the assessed value of the enterprise had been reduced from \$11,000 to \$3000. By 1855, Monroe was sold to George W. Johnston & Co. of Boalsburg. Johnston established a foundry to produce cast iron stoves, said to be of superior quality. Under his name the operation continued until 1864, when it was acquired by the Freedom Iron Co., owners of Greenwood Furnace. The foundry operated until 1864. Africa's History reports that the furnace was "unfavorably located for extensive business," but since most local furnaces operated in very remote locations, the comment does not completely explain Monroe's unprofitable operation.

United States Department of the Interior
National Park Service

NATIONAL REGISTER OF HISTORIC PLACES
CONTINUATION SHEET

Section number 9

Monroe Furnace Page 2

SOURCES:

Africa, J. Simpson. History of Huntingdon and Blair Counties, Pennsylvania (Philadelphia: Louis H. Everts, 1883), p. 215.

Huntingdon County, Pennsylvania: An Inventory of Historic Engineering and Industrial Sites, Historic American Building Survey/Historic American Engineering Record, National Park Service (unpublished, 1988).

Huntingdon County Tax Assessments for Barree Township, 1847-1870.
[at Huntingdon County Historical Society]

Linn, John Blair. History of Centre and Clinton Counties, Pennsylvania (Philadelphia: Louis H. Everts, 1883), p. 205.

Shedd, Nancy S. HAER consultant 1988; President Huntingdon County Historical Society: interviews 1988-89

U.S. Census. Manuscript Report of Manufactures, 1850.

United States Department of the Interior
National Park Service

NATIONAL REGISTER OF HISTORIC PLACES
CONTINUATION SHEET

Section number 10

Monroe Furnace Page 2

Verbal Boundary Description:

The limits of the district begin on the northwest edge of Legislative Route 31076 approximately 600 feet southwest of the northwest corner of the intersection of State Route 26 with Legislative Route # 31076; the boundary heads northwest from the north edge of the road for roughly 40 feet. The boundary then turns northeast and parallels the road for approximately 450 feet, to the west edge of a parking area; it then proceeds southeast to the south edge of LR 31076, then turns northeast and follows the road edge to the intersection and then to the east edge of Route 26. The boundary follows Route 26 north to the top of the first steep drop, approximately 50 feet, where it turns east for 75 feet, then south for 90 feet. Then, proceeding southwest, the boundary crosses Route 26, and parallels Legislative Route # 31067 for 300 feet beyond the western edge of Route 26. At that point the boundary turns north and returns to the point of origin.

Boundary Justification:

The boundary includes visible foundation remains along Legislative Route 31067 and the furnace stack adjacent to State Route 26. The boundary excludes the parking area on the northwest edge of the road intersection. It excludes vacant land with no visible remains to the east, south, north and west of the district.

**United States Department of the Interior
National Park Service**

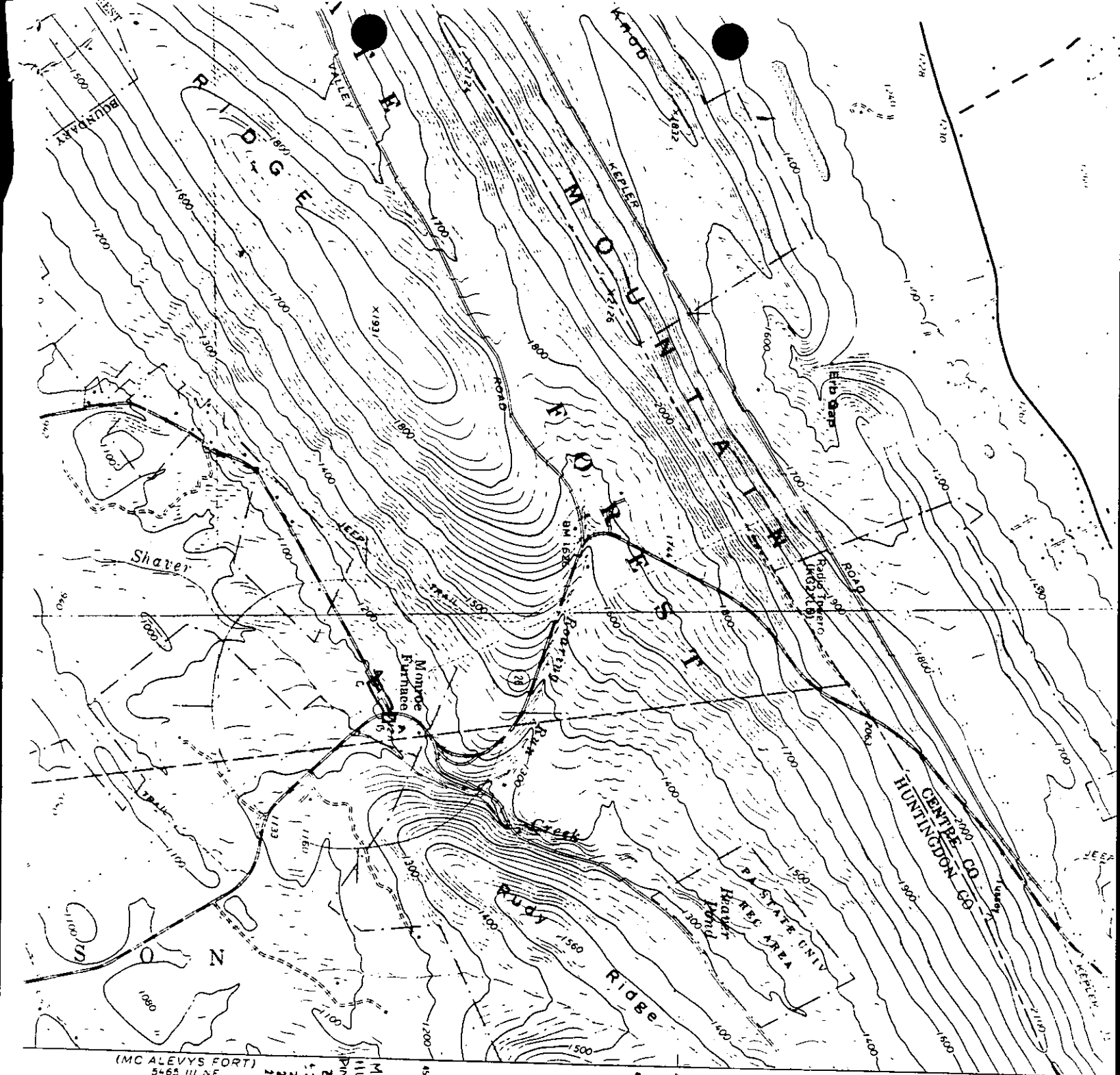
**National Register of Historic Places
Continuation Sheet**

Monroe Furnace

Section number 11 Page 1

This nomination contains material taken directly from the unpublished report prepared in 1988 for the Historic American Engineering Record (see Bibliographical References).

The author of that report, Nancy Shedd, is a major contributor to the text of this nomination although not the preparer.



(MC ALEVYS FORT)
5465 III NE

MONROE FURNACE
HUNTINGTON Co.
PINE GROVE MILLS
ZONE 18
4354475 N 255315
255315 4506780 B
4506780 4508705 C
4508705 4506780 D

4909

4910

42°30'

4911

4912