

**PENNSYLVANIA HISTORIC RESOU P SURVEY FORM**  
**BUREAU FOR HISTORIC PRESERVATION** Box 1026  
**PA HISTORICAL & MUSEUM COMMISSION** Harrisburg, PA 17120

7. Local survey organization

8. property owners name and address

9. tax parcel number/other number

10. U.T.M. 

--	--	--	--	--	--

 Zone 

--	--	--	--	--	--

 easting

usgs sheet: 

--	--	--	--	--	--

 northing

11. status (other surveys, lists etc.)

SPHSS

12. classification  
 site ( ) structure ( ) object ( )  
 building ( ) district ( )  
 Thematic

13. date(s) (how determined)

14. period 1914

15. style, design or folk type

Gothic Rev.

19. original use

School

20. present use

School

16. architect or engineer  
 H.deC. Richards

17. contractor or builder

Cramp & Co.

18. primary building mat./construc.

Reinf. Con.

21. condition

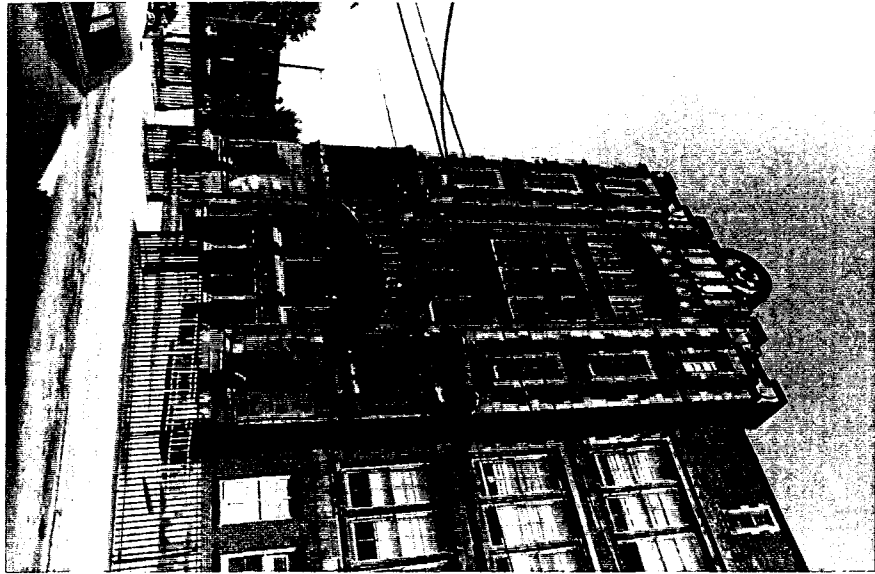
Good

22. integrity

Excel.

Brick/Terra Cotta

23. site plan with north arrow



24. photo notation

25. file/location

26. brief description (note unusual features, integ...)

(continue on back if necessary)

27. history, significance and/or background

(continue on back if necessary)

28. sources of information

29. prepared by:

(continue on back if necessary)

Computer Coding (BHP Survey Grantees Must Complete)

30. date

revision(s)

31. county \_\_\_\_\_ 32. style \_\_\_\_\_; \_\_\_\_\_; \_\_\_\_\_; \_\_\_\_\_

32. construction material \_\_\_\_\_; \_\_\_\_\_; \_\_\_\_\_; \_\_\_\_\_ 34. roof \_\_\_\_\_; \_\_\_\_\_; \_\_\_\_\_

35. design type \_\_\_\_\_; \_\_\_\_\_; \_\_\_\_\_

36. historic function \_\_\_\_\_; \_\_\_\_\_; \_\_\_\_\_; \_\_\_\_\_; \_\_\_\_\_; \_\_\_\_\_; \_\_\_\_\_; \_\_\_\_\_

37. construction feature \_\_\_\_\_; \_\_\_\_\_; \_\_\_\_\_; \_\_\_\_\_ 38. ext. walls \_\_\_\_\_; \_\_\_\_\_ 39. plan \_\_\_\_\_

40. facade width \_\_\_\_\_ 41. roof material \_\_\_\_\_ 42. stories \_\_\_\_\_ 43. depth \_\_\_\_\_

44. ext. design \_\_\_\_\_; \_\_\_\_\_; \_\_\_\_\_; \_\_\_\_\_; \_\_\_\_\_

45. int. design \_\_\_\_\_; \_\_\_\_\_; \_\_\_\_\_; \_\_\_\_\_; \_\_\_\_\_

1. County

Phila

2. municipality

Phila

6. other name (historic name if any)  
 Furness, Horace Howard Public School

3. street address or specific location  
 3rd & Mifflin

4. survey code

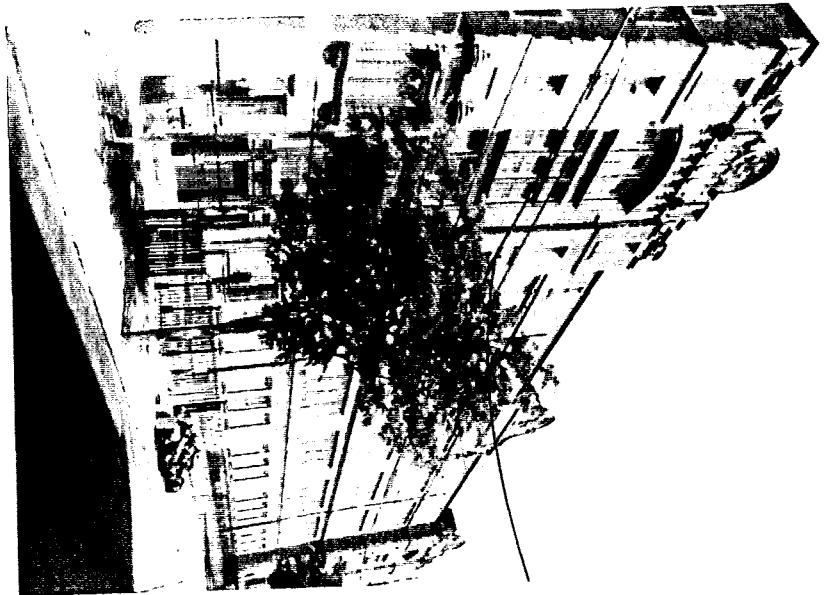
## Horace Furness Jr. High School

### Physical Description

Four story, red brick and terra cotta Gothic style structure. Rectangular in plan, the building spans along Third Street, with two projecting, flanking ends. The main entrance is a study in Gothic inspired detailing with an over sized arched doorway. The tripartite entrance doors, with pronounced mullions is capped by a tripartite transom panel. The surround is framed by tracery style panels with coffered panels between. Above the fenestration follows a pattern of tripartite sash and tripartite sash with transom panels on floors two and three. The fourth floor repeats the tripartite arched window detail. The flanking sections, pierced with windows, project, creating brick pilasters, framed by terra cotta quoining. The detailing is completed with more decorative, blind panels, and a battlemented parapet with center bell-shaped gable. The main body of the building has a regular pattern of four window sash grouped together. The floors are defined by a combination of terra cotta bandcourses and thin molded cornices. The attic story has a plain brick parapet with small windows framed by Gibbs surrounds.

### Statement of Significance

Constructed in 1912, the Furness Junior High School is the only example of this specific design constructed by the School Board. Designed and constructed under the tenure of J. Horace Cook, Superintendent of Schools and H. deCoursey Richards, chief draftsman, this structure is unusual for the school system. In an era when school design had taken on a level of uniformity, it is unusual to find a "one of a kind" design for a school structure. This structure also display Mr. Richards flare for intricate detailing, not often found on academic or other secondary institutional structures.



EVALUATION

EVALUATOR(S)

Philadelphia County  
Weir Mitchell School  
E487 880N420 520

Philadelphia Public Schools  
Philadelphia County  
Thony Wayne School  
E483 660N4419 960

Philadelphia Public Schools  
Philadelphia County  
J. Tilden Jr. High  
E480 060N4418 840

Philadelphia Public Schools  
Philadelphia County  
Jim Bartram High Sch  
E480 100N4418 820

Philadelphia Public Schools  
Philadelphia County  
Per George Smith School  
E485 940N4420 300

Philadelphia Public Schools  
Philadelphia County  
Thomas Buchanan Road  
E478 780N4417 200

Philadelphia Public Sch  
Philadelphia County  
Robert Kalston School  
18E486 340N421 120

Philadelphia Public Sch  
Philadelphia County  
Francis M. Drexel Sch  
18E485 220N441 120

Philadelphia Public Sch  
Philadelphia County  
Abigail Vane School  
18E487 160N4419 440

Philadelphia Public Sch  
Philadelphia County  
Francis Scott Key School  
18E486 260N4418 760

Philadelphia Public Sch  
Philadelphia County  
Southwark School  
18E86 420N4419 400

Philadelphia Public Sch  
Philadelphia County  
Horace Furness Jr. High  
18E487 080N4419 600

Philadelphia Public Sch  
Philadelphia County  
Delaplane McDaniel Sch  
18E484 280N4419 560

Philadelphia Public Sch  
Philadelphia County  
Edgar Allen Poe School  
18E484340N4418 860

Philadelphia Public Sch  
Philadelphia County  
Edward Bok Vocational S  
18E486 300N4419 320

Philadelphia Public Sch  
Philadelphia County  
Andrew Jackson School  
18E486 020N4420 280

Philadelphia Public Sch  
Philadelphia County  
Nathaniel Hawthorne  
18E486 100N4421 040



Maped by the U. S. Coast & Geodetic Survey  
Edited and published by the Geological Survey  
Control by USGS, NOS/NOAA, and USCF  
Planimetry by photogrammetric methods from aerial photographs  
taken 1946. Topography by planimetric surveys taken 1965. Revised by  
the Geological Survey from aerial photographs taken 1965  
Field checked 1967  
Selected hydrographic data compiled from NOS chart 280 (1967)  
This information is not intended for navigational purposes  
Polyconic projection. 10,000-foot grid ticks based on the Pennsylvania  
coordinate system, south zone, and New Jersey coordinate system  
1000-meter Universal Transverse Mercator grid ticks,  
zone 18, shown in blue  
1927 North American Datum  
To place on the projected North American Datum 1983  
move the projection lines 6 meters south and  
31 meters west as shown by dashed corner ticks  
Red tint indicates areas in which only landmark buildings are shown  
There may be private inholdings within the boundaries of the  
National or State reservations shown on this map

UTM GRID AND 1983 MAGNETIC NORTH  
DECLINATION AT CENTER OF SHEET

Revisions shown in purple and woodland compiled  
by the Geological Survey from aerial photographic  
taken 1987 and other sources. This information  
not field checked. Map edited 1985

PHILADELPHIA PUBLIC SCHOOLS  
Philadelphia County  
George Washington Sch.  
18E486 920N4420 160

PHILADELPHIA PUBLIC SCHOOLS  
Philadelphia County  
Frank C. Palumbo School  
18E486 180N4420 880

PHILADELPHIA, PA. - N. J.  
39075 H2-1F-024  
1987  
PHOTO REVISIONS 1986  
DMA DMS I NW BELMPS 1981

ROAD CLASSIFICATION

Heavy-duty	Light-duty
Medium-duty	Unimproved dirt

Interstate Route   
  U.S. Route   
  State Route

PHILADELPHIA, PA. - N. J.  
 39075 H2-1F-024  
 1987  
 PHOTO REVISIONS 1986  
 DMA DMS I NW BELMPS 1981