

National Register of Historic Places Inventory—Nomination Form

North Broad Street Mansion District

4

Continuation sheet

Item number

Page

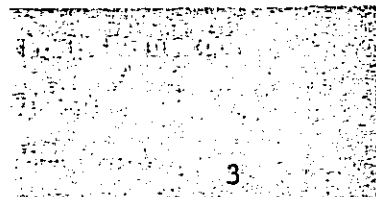
NORTH BROAD STREET

- 1428: Community Holding Corporation
1428 N. Broad Street
Philadelphia PA 19121
Tax #: 471160900
- 1430: Palace Mission, Inc.
c/o Miss Anne Shanurse
772 S. Broad Street
Philadelphia PA 19121
Tax #: 471161000
- 1432: Community Holding Corporation
1428 N. Broad Street
Philadelphia PA 19121
Tax #: 471161100
- 1438: John H. & William H. Degenhardt
1438 N. Broad Street
Philadelphia PA 19121
Tax #: 471161200
- 1440: Corporation of Veritas
1440 N. Broad Street
Philadelphia PA 19121
Tax #: 471161300
- *****
- 1500: Temple University
Broad and Montgomery
Philadelphia PA 19121
Tax #: 471161400
- 1510: Temple University
Broad and Montgomery
Philadelphia PA 19121
Tax #: 471161500
- 1512: Original Apostolic Faith Church of the Lord Jesus Christ
7112 N. Broad Street
Philadelphia PA 19126
Tax #: 471161600

**National Register of Historic Places
Inventory—Nomination Form**

North Broad Street Mansion District

4



3

Continuation sheet

Item number

Page

- 1514: Original Apostolic Faith Church of the Lord Jesus Christ
7112 N. Broad Street
Philadelphia PA 19126
Tax #: 471161700
- 1516: Original Apostolic Faith Church of the Lord Jesus Christ
7112 N. Broad Street
Philadelphia PA 19126
Tax #: 471161800
- 1518: Ralph Heller
1518 N. Broad Street
Philadelphia PA 19121
Tax #: 471161900
- 1520: Orrie Goldsmith Jr.
2842 N. 22nd Street
Philadelphia PA 19132
zz 471162000
- 1522: Annette and Richard Metzger
1522 N. Broad Street
Philadelphia PA 19121
Tax #: 471162100
- 1524: Harold Metzger
1524 N. Broad Street
Philadelphia PA 19121
Tax #: 471162200
- 1526: Lester and Florence Hobbs
1526 N. Broad Street
Philadelphia PA 19121
Tax #: 471162300

CARLISLE STREET

- 1429: (rear of 1430 N. Broad)
Palace Mission, Inc.
c/o Miss Anne Shanurse
772 S. Broad Street
Philadelphia PA 19121
Tax #: 471161000

**National Register of Historic Places
Inventory—Nomination Form**

North Broad Street Mansion District

4

Continuation sheet

Item number

Page

1433: (rear of 1432 N. Broad)
Community Holding Corporation
1428 N. Broad Street
Philadelphia PA 19121
Tax #: 471161100

1437: (rear of 1438 N. Broad)
John H. & William H. Degenhardt
1438 N. Broad Street
Philadelphia PA 19121
Tax #: 471161200

1432: (rear of 1431 N. 15th)
Degenhardt Caterers
1438 N. Broad Street
Philadelphia PA 19121
Tax #: 471169100

NORTH 15TH STREET

1431: William G. & Sally Koerner-Beard
438 Van Kirk Street
Philadelphia PA 19120
Tax #: 471181200

1437: National Temple Non-Profit Corporation
1625 Master Street
Philadelphia PA 19120
Tax #: 471181300

1439: National Temple Non-Profit Corporation
1625 Master Street
Philadelphia PA 19120
Tax #: 471181400

1503: James W. Brown
1839 N. Taylor Street
Philadelphia PA 19121
Tax #: 471181605

National Register of Historic Places Inventory—Nomination Form

North Broad Street Mansion District

4

Continuation sheet

Item number

Page

5

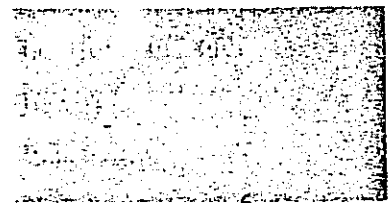
- 1505: missing
- 1507: missing
- 1509-15: vacant
- 1517-19: Emanuel Rockefeller
1416 S. 15th Street
Philadelphia PA 19146
Tax #: 471182300
- 1521: Ernest J. Brown
1521 N. 15th Street
Philadelphia PA 19121
Tax #: 471182400
- 1523: vacant
- 1529-31: Paul and Charles Linthicum
227 S. Frazier Street
Philadelphia PA 19139
Tax #: 471182500
- 1533: Logan & Logan, Inc.
1533 N. 15th Street
Philadelphia PA 19121
Tax #: 471182800
- 1535: vacant

- 1500-14: Elmira Jeffries
Memorial Home, Inc.
1469 N. Broad Street
P.O. Box 3423
Philadelphia PA 19121
Tax #: 88604500
- 1516: John E. Dowell and Roseanne O'Connor
716 N. 3rd Street
Philadelphia PA 19123
Tax #: 471194500

**National Register of Historic Places
Inventory—Nomination Form**

North Broad Street Mansion District

4



6

Continuation sheet

Item number

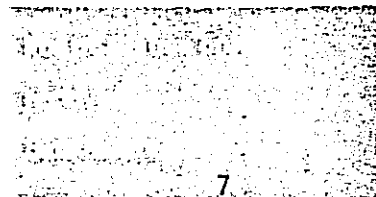
Page

- 1518: John Lonon, Jr.
1354 W. Kerbaugh Street
Philadelphia PA 19140
Tax #: 471194600
- 1520: Annie and Marion Maslard
1520 N. 15th Street
Philadelphia PA 19121
Tax #: 471194700
- 1522: Walliuddin S. Abdullah
1524 N. 15th Street
Philadelphia PA 19121
Tax #: 471194800
- 1524: Walliuddin S. Abdullah
1524 N. 15th Street
Philadelphia PA 19121
Tax #: 471194900
- 1526: Anna Thomas, in trust for Tamas Knecht
1111 69th Avenue
Philadelphia PA 19126
Tax #: 471195000
- 1528: Robert Kropinski and John Teti, Jr.
1528 N. 15th Street
Philadelphia PA 19121
Tax #: 471195100
- 1530: Philadelphia Housing Authority
2012 Chestnut Street
Philadelphia PA 19103
Tax #: 471195200
- 1532: Terry and Myrtle Thomas
5104 Wyalusing Avenue
Philadelphia PA 19131
Tax #: 471195300
- 1534: William and Sally Koerner-Beard
438 Van Kirk Street
Philadelphia PA 19120
Tax #: 471195400

**National Register of Historic Places
Inventory—Nomination Form**

North Broad Street Mansion District

4



Continuation sheet

Item number

Page

1536: Rudolph and Beatrice McKenzie
6230 Ellsworth Street
Philadelphia PA 19143
Tax #: 471195500

1538: Vernon L. and Marian E. Kelly
6843 Ogontz Avenue
Philadelphia PA 19126
Tax #: 471195600

1540: Willie Mae Johnson
1540 N. 15th Street
Philadelphia PA 19121
Tax #: 471195700

1542: Willie Mae Johnson
1424 N. Bouvier Street
Philadelphia PA 19121
Tax #: 471195800

SYDENHAM STREET

1520: Cornelius and Milly McClanahan
3832 Harold Street
Philadelphia PA 19125
Tax #: 471204200

1533: Willie and Shirley Ross
2622 W. Seltzer Street
Philadelphia PA 19132
Tax #: 471200500

NORTH 16TH STREET

1501: Bessie Mae Totten
6017 N. 10th Street
Philadelphia PA 19141
Tax #: 471215700

1505: Felix Scrutchins and Mabel Ingram
1505 N. 16th Street
Philadelphia PA 19121
Tax #: 471215800

National Register of Historic Places Inventory—Nomination Form

North Broad Street Mansion District

4

Continuation sheet

Item number

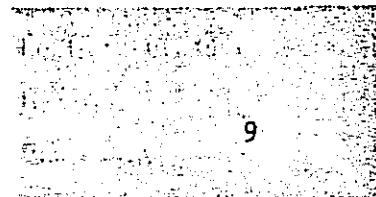
Page

8

- 1507: Edith La M and Benjamin Messiah
1616 N. Bouvier Street
Philadelphia PA 19121
Tax #: 471215900
- 1509: Theolyn C. and James Allison
1509 N. 16th Street
Philadelphia PA 19121
Tax #: 471216000
- 1511: Mildred D. Watkins
1511 N. 16th Street
Philadelphia PA 19121
Tax #: 471216100
- 1517: Bensana Corporation
1321 Arch Street
Philadelphia PA 19107
Tax #: 471216200
- 1519-21: James R. Faison
1519 N. 16th Street
Philadelphia PA 19121
Tax #: 471216300
- 1523: Orrie and Alice Goldsmith
2847 N. 22nd Street
Philadelphia PA 19132
Tax #: 471216400
- 1525-27: Hobson R. & Evelyn C. Reynolds
1525 N. 16th Street
Philadelphia PA 19121
Tax #: 471216500
- 1531: S. Francis Riley
425 S. 15th Street
Philadelphia PA 19146
Tax #: 471216700
- 1535: (aka 1512 Oxford Street)
Allegheny East Conference Association
1512 Oxford Street
Philadelphia PA 19121
Tax #: 471129600

National Register of Historic Places
Inventory—Nomination Form

North Broad Street Mansion District



Continuation sheet

Item number

Page

- 1500-06: Bell Telephone of Pennsylvania
1631 Arch Street
Philadelphia PA 19103
Tax #: 884330500
- 1522: Clarence E. Wood
1522 N. 16th Street
Philadelphia PA 19121
Tax #: 471226700
- 1524: Hobson R. and Evelyn C. Reynolds
1524 N. 16th Street
Philadelphia PA 19121
Tax #: 471226800
- 1526: Viola Howell
1526 N. 16th Street
Philadelphia PA 19121
Tax #: 471226900
- 1530: Unity Mission Church Home Training
1530 N. 16th Street
Philadelphia PA 19121
Tax #: 471227000
- 1534: Augustus Paul Abraham Revere Happy Mind Sincere Determination
772 S. Broad Street
Philadelphia PA 19146
Tax #: 471227100

JEFFERSON STREET

- 1403: Raymond Harris
1403 Jefferson Street
Philadelphia PA 19121
Tax #: 471125500
- 1405: Vivienne Crawford & Frank Reynolds
1405 Jefferson Street
Philadelphia PA 19121
Tax #: 471125600
- 1407: Harry Friedman
Market Street National Bank Building
Philadelphia PA
Tax #: 471125700

National Register of Historic Places Inventory—Nomination Form

North Broad Street Mansion District

4

Continuation sheet

Item number

Page

10

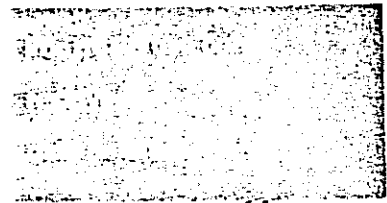
- 1409: George Elum
6314 Ross Street
Philadelphia PA
Tax #: 471125800
- 1411: Philadelphia Housing Authority
2012 Chestnut Street
Philadelphia PA 19103
Tax #: 471125900
- 1413: Philadelphia Housing Authority
2012 Chestnut Street
Philadelphia PA 19103
Tax #: 471126000
- 1415: Maggie Ellis
1415 Jefferson Street
Philadelphia PA 19121
Tax #: 471126100
- 1417: Charles and Viola Jackson
1417 Jefferson Street
Philadelphia PA 19121
Tax #: 471126200

- 1545: Rev. Vernon Prioleau Cleophus Spiller
1545 Jefferson Street
Philadelphia PA 19121
Tax #: 471126500

OXFORD STREET

- 1402-04: John J. Quinn
1402 Oxford Street
Philadelphia PA 19121
Tax #: 181077800
- 1406: Richard T. Drazele
1406 Oxford Street
Philadelphia PA 19121
Tax #: 181077900

**National Register of Historic Places
Inventory—Nomination Form**



North Broad Street Mansion District

4

Continuation sheet

Item number

Page

11

- 1508: Bernard H. Blackwell
1508 Oxford Street
Philadelphia PA 19121
Tax #: 471129400
- 1510: Charles S. Sherman
1510 Oxford Street
Philadelphia PA 19121
Tax #: 471129500
- 1512: Allegheny East Conference Association of 7th Day Adventists
1512 Oxford Street
Philadelphia PA 19121
Tax #: 471129600

National Register of Historic Places Inventory—Nomination Form

N. Broad St. Mansion District

7

Continuation sheet

Item number

Page

North Broad Street

- 1428: James Caven House. Angus Wade, architect, 1890. Three-and-one-half story brownstone-faced townhouse. Rusticated courses first and second stories, with broad belt course between stories; third story treated as interwoven stone blocks derived from Hale's nearby Widener mansion. Grand stone front stairs and retaining wall makes ambitious entrance. Attic story mansarded with double windows in French gable. Side walls of brick; sculptural-shaped chimneys enliven skyline. Excellent condition.---Significant.
- 1430: Charles Ellis House. William Decker, architect, 1890. Imposing brownstone, Richardsonian Romanesque house. Two-bay, arched front entrance screens three-bay house, intended subdivision of parlor, hall, and receiving rooms across the front. Three-dimensional composition of octagonal tower (a corner off the living room), tall central gable, and tower side gable, with a variety of wall textures and patterns crowned by a pictureque skyline of pinnacles, gables, and chimney pots, complete one of the two most important surviving mansions of North Philadelphia. The interior contains notable rooms including a handsome multi-story hall, all in impeccable condition. Excellent condition.---Significant.
- 1432: J. Bolton Winpenny Residence, 1868. Three-and-one-half story, mansarded, Second Empire townhouse. Strongly outlined round-headed openings are organized into three vertical registers, diminishing in classical fashion story by story. Massive, overhanging wood-bracketed cornice sets off mansard with segmental-headed dormers. Side yard, with overhanging side bay emphasizes the importance of the building. Symmetrical placement with 1438 North Broad Street adds to the urbane sense of the streetscape. Excellent condition.---Significant.
- 1438: Peter Jordan Residence, 1868. Similar to Number 1432, one-half of intended (but never executed) brownstone double, with facade organized into three vertical, regularly-spaced registers diminishing story by story. The house was altered circa 1890 with a classical pedimented portico of similar brownstone in front of original round-headed opening. Balustrade across roof presumably added at the same time. Excellent condition; high integrity; Jordan was of note as a partner of Richard Smith, a resident of the south end of the block.---Significant.

National Register of Historic Places
Inventory—Nomination Form



Continuation sheet ^N Broad St. Mansion District

Item number 7

Page 8

1440:

Alexes Club. Herman Flower, 1899. Three-story tan brick and terra cotta trimmed clubhouse; with large, paired round-headed windows on first floor, and three light windows on second and third stories, all framed by molded terra cotta, below pressed metal cornice. Principal entrance on Jefferson Street, framed by engaged columns with club insignia in frieze. Significant addition on rear by Rothschild and Zilenziger at the time when the building was taken over by Rodef Shalom for their "Teller School". Addition of tan brick with metal cornice, 1907. Good condition.---Significant.

1500 Block North Broad Street

1500:

A. E. Burk House. Simon and Bassett, 1907; limestone double-fronted corner house for leather merchant based on Van Renssalaer facade at 19th and Walnut; three-register Broad Street facade, with central door framed by Ionic portico; pedimented central hall window on second floor continues axis; coursed smooth-dressed ashlar base; with overhanging modillioned cornice; side elevation organized with door, and triple windows above in center flanked by elliptical bays on either side looking out over side yard. Rear carriage house forms back screen for elaborate garden; interior of house retains 90% of original golden oak trim in Beaux-Arts detail. Side service wing in simple detail survives as well. Excellent condition.---Significant.

1510:

Henry S. Hale residence, circa 1870. Three-and-one-half story marble-fronted city residence in Renaissance style with square-headed windows on the first and third floors, pedimented windows on second floor, and framed round-headed windows on fourth floor below overhanging cornice. Massive second-story side bay overlooks side yard. Hale has interest as well as a manufacturer of fancy walnut trim and picture frames, which were presumably much in use in the neighborhood. The house survives in excellent condition.---Significant.

National Register of Historic Places
Inventory—Nomination Form

N. Broad St. Mansion District

7

Continuation sheet

Item number

Page

9

1400 North Carlisle Street

Rear of North
Broad Street
(aka 1427 Car-
lisle):

Two-story, c. 1880 stable, altered for garage use.---
Contributing.

Rear of 1430
North Broad
Street (aka
1429 Carlisle):

Stable for Charles Ellis; William Decker, architect.
Brick, brownstone belt courses, and quoins around
principal openings. Bracketed wood eaves with raised
central gable framing loft door. Generally, excellent
condition.---Contributing.

Rear of 1432
North Broad
Street (aka
1433 Carlisle):

Two-story, brick Victorian stable with round-headed
windows capped by projecting brick headers; flat roof
with a bracketed cornice. Excellent condition.---
Contributing.

Rear of 1438
North Broad
Street (aka
1437 Carlisle):

Asymmetrical two-and-one-half story, Victorian stable,
with second-story overhanging bay, mansard roof with
three segmental headed dormers.---Contributing.

1432 (rear of
1431 No. 15th
Street):

Important two-story Victorian brick and brownstone
stable, attributed to Willis G. Hale for Mason Hirsh.
Florentine arch above entrance; corbeled piers from
second story carry third-story tower; angled brick
coursing interspersed with slate creates geometric
patterns. Excellent condition.---Significant.

National Register of Historic Places
Inventory—Nomination Form

N. Broad St. Mansion District

7

Continuation sheet

Item number

Page

10

North 15th Street

- 1431: The Hirsh residence was probably erected before 1860 as speculative project by the owner of the property who sold it to the Jewish Foster Home, which in turn sold the building to Mason Hirsh in 1880. At that time, the conventional three-story Italianate brick double house was modernized with a large rear addition and an impressive carriage house (both probably the work of Willis G. Hale). The main facade is conservative, with two registers of square-headed windows, and an off-center door indicating a side hall plan. The bracketed wood cornice dates from the period. The rear wing is terminated by an octagonal tower similar to other Hale projects of the 1880s. At a later date, the facade was stuccoed, perhaps circa 1902 when Louis Kolb purchased the house from the Hirsh family. Abandoned but repairable.---Contributing.
- 1437: The William Ivins Residence was probably erected in 1873 in the conventional four-story large-scale double form similar to 1439. In 1882 it was sold to carpet manufacturer William Ivins who remained in the house for more than a generation and was probably responsible for its turn-of-the-century remodelling in more fashionable Francois Ier style. At that time, windows were lowered, a side bay of two stories was added, the mansard was replaced by a steep gabled roof ornamented with two elaborately ornamented terra cotta-clad dormers (repeated on the side elevation of the gable), and the entire house was reclad in modern grey Pompeian brick above the first floor limestone base. Though abandoned the principal features are in restorable condition. The house is a major period house of a sort now largely gone in North Philadelphia.---Significant.
- 1439: The Henry Disston home was erected in 1871 in the scale of North Broad Street, with three stories capped by a full height mansard accented by a pair of dormers that continue the window registers below. The first floor is sheathed in white marble which is capped by a marble cornice. Segmental marble windows heads and sills add to the splendor of the facade. Though abandoned, the home retains its principal features. As the home of a prominent industrialist and developer of the region, the house is important.---Significant.

National Register of Historic Places Inventory—Nomination Form

N. Broad St. Mansion District

7

Continuation sheet

Item number

Page

11

- 1503: Three-and-one-half story Second Empire mansarded townhouse (c. 1870) of similar design to neighboring doubles; marble basement with marble sills and lintels, round-headed doorway with central keystone in stone frame; segmental stone window head. One over one windows on first floor, 2/2 above; bracketed wood cornice. Average condition.---Contributing.
- 1505-07: Three-and-one-half story Second Empire mansarded double house, (c. 1870). Number 1505 owned and occupied by rare book dealers and collectors Philip and Abraham Rosenbach in the early twentieth century. Original slate mansard reshingled. Average condition.---Number 1505 significant, Number 1507 contributing.
- 1509,1515: Vacant.
- 1517-19: Three-and-one-half story Second Empire mansarded double house; 1519, two-register brick house with marble basement and trim; common bond brick wall; marble segmental window lintels; 1/1 sash; bracketed wood cornice with imbricated slate mansard; wood flashings. Projecting side bay carried on deep brackets: 1517, similar design but faced with marble; three-register front, and added side entrance perhaps to professional office. Both in good condition.---Contributing.
- 1521: Three-story marble-fronted double, c. 1870, paired segmental-headed windows with raised surrounds; quoins at corners; small-paned sash all early twentieth century alterations. Original cornice removed.---Contributing.
- 1523: Vacant.
- 1529-31: Pair of circa 1870 three-story brick double houses; square-headed windows missing original shutters; round-headed marble door surround with central keystone; bracketed and dentilled cornice; 1529 has been covered with permastone.---Intrusion. 1531 good condition---Contributing.
- 1533: One-half of brownstone-trimmed three-register, three-story double house; bracketed wood cornice; one over one sash, c. 1870. Vacant but restorable.---Contributing.
- 1535: Vacant.

National Register of Historic Places Inventory—Nomination Form

N. Broad St. Mansion District

7



Continuation sheet

Item number

Page

12

- 1500-14: Four-story brick c. 1980 nursing home.---Intrusion.
- 1516: Symmetrically composed five-register, c. 1868 townhouse with central entrance; brownstone rusticated basement with permastone over upper brownstone walls; two over two sash windows with carved brownstone segmental heads and sills carried on corbels. Round-arched entrance over double leaf door with panelled jambs; set under projecting entablature carried by floral-treated brackets. Bracketed wood cornice.---Contributing.
- 1524: Remodeled unit of 1518-1542 North 15th Street, 1893, J. Shaw, architect. Brownstone facade, four stories; carved brownstone ornament over first-story windows; corbel cornice over third story; fourth story features carved lozenge panels; bracketed cornice. Brownstone balustrade flanks front steps.---Contributing.
- 1518-42: Row of three-and-one-half story brick houses; c. 1867; slate-mansarded roof over bracketed cornice with two segmental dormers per unit; marble sills and window hoods; two over two sash windows; marble porticoes with double-leaf panelled doors, Number 1542 has ground-story storefront. Cast iron basement window grilles.---Contributing.
- North Sydenham Street
- 1520: Spectacular two-story mansarded stable, with off-center, jerkinheaded wall gable surrounding hay loft. Horseheads, derived from the Parthenon, mark the roof termination at each end. Lower facade subdivided into people door and horse door, and suggest importance of building. A major Victorian stable that survives in nearly complete condition.---Significant.
- 1533: Two-story brick stable, c. 1870. Marble lintels, bracketed cornice, modern steel lintel garage door.---Contributing.
- 1535: Two-story brick stable, c. 1880; round arches under archivolt on ground story; pointed arches above.---Contributing.

National Register of Historic Places
Inventory—Nomination Form

N. Broad St. Mansion District

7

Item number

Page

13

Continuation sheet

North 16th Street

- 1501-03: The Henry Shoch house is a three-story brick, Georgian Revival residence, erected at the end of the nineteenth century, probably by carpenter/builder Shoch for himself. Ashlar basement, with Flemish bond walls; jack-arched windows with centered keystones. Pedimented door at side of projecting front block. Side porch on south side; service core on north side. Third floor crowned by massive cornice; excellent condition.---Significant.
- 1505-07: Twin Italianate houses c. 1870, remodelled circa 1880 in fashionable Queen Anne. Cut stone basement, with brownstone-trimmed round-headed doors, and segmental window lintels below bracketed cornice; house similar to Numbers 1509-11, part of initial development of block. In the 1880s, Robert Dornan (1505), owner of Dornan Carpet Works, and Samuel Lewis (1507), remodelled houses with large pressed metal wall gables masking mansard. Deep consoles in dormers, lattice overlay add picturesque profile to skyline. Side bay overlooks side yards at second floor. Excellent condition.---Significant.
- 1509: One half of twin Italianate house similar to original design for Numbers 1505-07; originally brick with brownstone base, door and window trim, below wood cornice. Refaced with stucco imitating brownstone, probably circa 1900, when Colonial Revival fan light was added. Second and third story side bay overlooking side yard. Excellent condition.---Contributing.
- 1511: North half of double, circa 1868, refaced in Pompeiian brick and brownstone, 1891, T. P. Lonsdale, architect. for James Conoway (umbrella manufacturer). Coursed brownstone first floor with round-headed windows separated by central column below second-floor brownstone bay, and third-floor brownstone-framed thermal windows. Door and single windows in half bay marking circulation. Excellent condition, former home of Congressman William Gray.---Significant.

National Register of Historic Places
Inventory—Nomination Form

N. Broad St. Mansion District

7

Page

14

Continuation sheet

Item number

- 1517: 1892 refacing of 1870 house, for builder Erskine Smith, by Hazelhurst and Huckel; brownstone lower facade, Pompeian brick above with brownstone trim in modern Renaissance style. Original upper cornice removed but supports survive. Rear wing, impressive red brick facade with paired brick bays, massive corbelled brick cornice. Despite loss of cornice, major late Victorian house.---Significant.
- 1521: T. P. Lonsdale architect, 1893, new stone front, mansard, and side bay over existing red brick circa 1870 double. Quarry-faced limestone facade of alternating broad and narrow courses, with smooth-dressed stone window surrounds. Columns support entablature above entrance. Queen Anne gable in fourth floor mansard. Immense overhanging three-story bay (bathroom?) carried on brackets and capped with gable. Pressed metal strap work in panel below window. Excellent condition.---Contributing.
- 1523: Impressive brownstone, Victorian half of double, refaced c. 1880, in brownstone with incised abstracted carving. First floor treated as recessed wall plane overlaid with window and door surrounds supporting cornice. Elaborate pressed metal cornice articulated in same vocabulary as windows below. Vacant, but good condition.---Contributing.
- 1525-27: Pair of circa 1870 three-story Italianate houses, round-headed, stone-trimmed doors, square-headed windows in two registers, bracketed and dentilled wood cornice. Number 1525 has imbricated slate mansard with segmental-headed dormers, as part of original construction. Number 1525 refaced circa 1890 with tan Pompeian brick. Both, excellent condition. contributing.
- 1531: Three-and-a-half story Victorian Gothic house for Azariah Hoopes, 1882; marble ashlar base; three-register front, with door at north side. Marble impost with glazed brick to outline Florentine arches above windows. Wall dormer breaks through conservative bracketed wood cornice with Gothic version of Palladian window. Victorian/Queen Anne checkerboard at peak of gable. Windows in side elevation overlook side yard with marble gate posts and brick panels.---Significant.

National Register of Historic Places
Inventory—Nomination Form

N. Broad St. Mansion District

7

15

Continuation sheet

Item number

Page

1535: Church of Our Redeemer. Reformed Episcopal church, Frank Watson, 1891. Handsome brownstone-faced three-aisle Gothic church. Round central nave with lancet windows, flanked by lower side aisle on south, and tower above aisle on north; spur buttresses mark facade subdivision, capped by pinnacles breaking through wall plane. Excellent condition.---Significant.

1500-06: Bell Telephone offices; John T. Windrim, architect; 1924. Limestone, Neo-Georgian telephone exchange building. Coursed limestone base, capped by belt course. Smooth ashlar walls above with square-headed, small-paned windows. Shallow cornice at top caps walls. Handsome institutional building, intended to fit in with high-style community by major Philadelphia architect.---Contributing.

1510,1514: Vacant since 1920s.

1522: Impressive four-story brownstone, c. 1875 Second Empire double house, capped by imbricated slate mansard; originally 1524 was similar but altered in 1890. Window surrounds project from wall and are grooved to recall French Neo-Grec; segmental window heads recall Second Empire, while sills joined to belt course recall R. M. Hunt's New York Buildings. Bracketed cornice caps stone wall. Impressive carved segmental pediment on polished granite columns frame entrance. One of the most impressive brownstones in the region. Excellent condition.---Contributing.

1524: Refacing of circa 1875 house, 1890, by Thomas P. Lonsdale for Charles Butterworth, owner of a machine shop. Refaced in darker brownstone, with French Gothic detail. Elaborate carving over doors; curved windows capped by floral carving. Elaborate wall dormer breaks up through cornice and screens most of original mansard. Elegant wrought iron railing adds Art Nouveau element to entrance. Excellent condition.---Significant.

**National Register of Historic Places
Inventory—Nomination Form**

N. Broad St. Mansion District

7

16

Continuation sheet

Item number

Page

- 1526: Walter Dick House; circa 1875. Interesting eclectic suburban house; three-register townhouse scheme with smooth dressed white marble trim around openings in Pennsylvania blue marble facade. Wall dormer breaks up into mansard, framed by deep overhanging eaves with Gothic gable truss carried by brackets. Side elevation brick with marble trim. Vacant, but good restorable condition.---Contributing.
- 1530: One of the most important Victorian mansions remaining in North Philadelphia. The Ogden house was erected in 1876 for E. H. Ogden, a supplier of brewing materials, from plans by John McArthur, Jr. It is an impressive marble-fronted Second Empire mansion with a massive double leaf door in a round-headed opening below a canopy carried on deep brackets; round-headed windows are framed by projecting stone surrounds and joined by belt courses at each story. The central bay projects slightly, and is accented at the cornice level by a shallow pediment. On the side, the house is primarily brick with marble trim; on the south side is a large, classical marble porte cochere that opens into a cylindrical entrance hall. The interior is extraordinary, retaining its historic painted, Neo-Grec ceilings, and trompe l'oeil ceiling, fancy woodwork, and trim. In the 1880s Hamilton Disston lived in the house, and modified it with an important Queen Anne fireplace in the dining room. In the 1920s the house was sold to the Progress Club, because of its size and splendor, and because of its location near the Broad Street subway and other clubs. The house is in impeccable condition.---Significant.
- 1534: Odd Fellow Hall; Emil Wightman, 1925. Four-story modern classical clubhouse. Limestone base, with three stories of tan brick punctuated by paired 1/1 sash. Quoined corners; pressed metal cornice, shops in basement with principal entrance in center of Oxford Street facade. Good condition.---Contributing.

National Register of Historic Places
Inventory—Nomination Form

N. Broad St. Mansion District

7



17

Continuation sheet

Item number

Page

1400 Block Jefferson Street

- 1403-05: Three-story brick, marble-trimmed, circa 1870 double. Marble basement, sills; and square lintels; round-headed doors with keystones; dentilled and bracketed cornice. Number 1405 front second story bay c. 1880.---Contributing.
- 1407-15: Three-story brick, marble-trimmed, c. 1870 row. Marble basement, sills; and square lintels; round-headed doors with keystones; dentilled and bracketed cornice. ---Contributing.
- 1417: Circa 1890 refacing in Gothic style, brownstone trim, Pompeian brick, Gothic arches above first floor door and window. Brownstone belt course at each level, three-sided bay at second floor, round-headed windows at third floor; gable at top.---Significant.

1500 Block Jefferson Street

- 1545: Important, two-story, Queen Anne-style, brick carriage house, Daniel Evans, architect, 1889. Altered carriage portal through a rusticated brownstone base to the east, three-story tower to the west with a second-story thermal window surmounted by a roundel in the parapet. Segmental and gabled dormers break the hipped roof.---Contributing.

Oxford Street

- 1402-04: Quaker City Wheelman. 1895 new facade projects approximately five feet in front of circa 1870 rowhouse; Pompeian brick Renaissance facade subdivided into three-part scheme by large round arches, central entrance with Roman type thermal windows; central projecting bay above. Third story is recessed porch with heavy bracketed cornice. Side elevation shows original Italianate cornice. Schermerhorn & Reinhold, architects.---Significant.
- 1406: Circa 1890 carriage house; large round-arched entrance framed by radially-laid bricks repeated by flanking round-headed windows. Second floor shows jack arches repeating fenestration organization below. Similar treatment on side with loft door on second story rear.---Contributing.

**National Register of Historic Places
Inventory—Nomination Form**

N. Broad St. Mansion District

7

Page 18

Continuation sheet

Item number

- 1508-10: Circa 1890 three-story, brownstone based double house. Tan brick upper stories capped by pressed metal cornice; wood and pressed metal bay on second story of both. Third story of Number 1508; 1 over 1 sash.--- Contributing.
- 1512: Circa 1890 four-story brownstone-based, Pompeiian brick with limestone trim (apartment building). Now SDA welfare sevice; pressed metal frontispiece over double-leafed door. Nine over one windows on first three stories, round-headed windows on fourth story; missing pressed metal cornice and columns under frontispiece.--- Contributing.