

Part of  
Covered Bridges of Columbia and Montour  
Counties TR

Available at the National Park Service website  
<http://www.nr.nps.gov/nrcover.htm>

**NATIONAL REGISTER OF HISTORIC PLACES  
INVENTORY -- NOMINATION FORM**

FOR HCRS USE ONLY
RECEIVED
DATE ENTERED

Covered Bridges of Columbia & Montour Counties

CONTINUATION SHEET

ITEM NUMBER 7 PAGE 3

YEAR	QUEENPOST	BURR	KINGPOST	WARREN
1881	Shoemaker (49') 38-19-06	Gottlieb Brown 86'8" 38-47-01, 38-49-11		
	Kramer (50') 38-19-23			
	Creasyville (44'6") 38-19-36			
1882	Furnace (100'10") 38-19-20, 2 spans			Johnson 60'9" 38-19-37
1884		Wanich (98'9") 38-19-18		
1886	Fowlersville (40') 38-19-05			
1887	"Y" (76') 38-19-22			





# 38-19-37      **Name:** Johnson Covered Bridge  
**Location:** T320      Cleveland Township  
**UTM: Zone** 18      **N** 4526050      **E** 374970  
**Owner:**

Columbia County

**Stream:** Mugser Run  
**Truss Type:** Warren  
**Builder:** Daniel Stine  
**Year:** 1882

**Length:** 60 ft 9 in      **Width:** 13 ft 6 in  
**Clearance:** 12 ft      **Load:** 4 tons

**Distinguishing Features:**

The Johnson Covered Bridge is 60.25 feet long, with a roadway width of 13.5 feet, and clearance of 12 feet. It is of the Warren Truss design. Iron tension rods connecting with the lower chord parallel the queen post.

**Condition:**

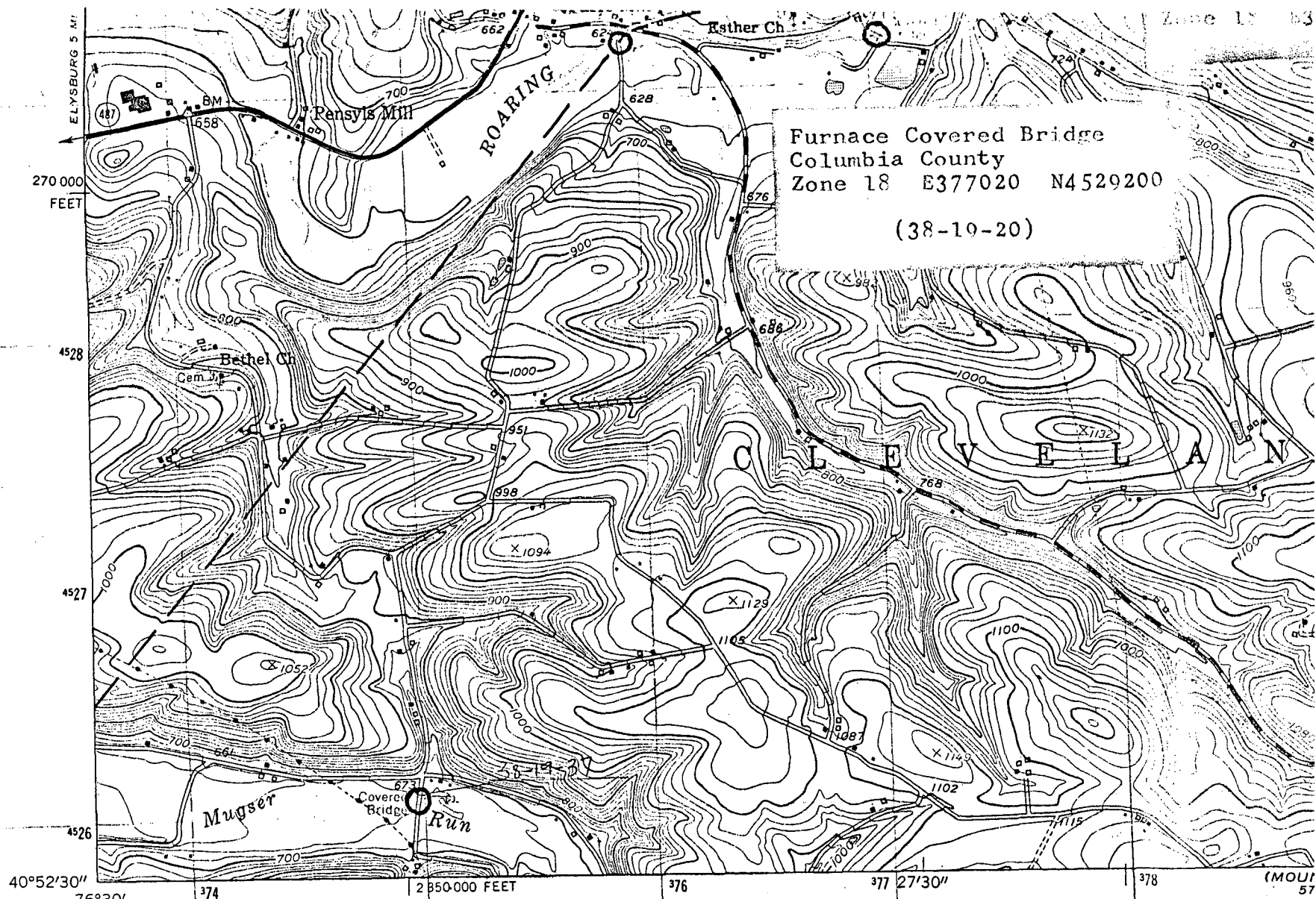
The roof consists of metal panels over wooden ribs which fit over rafters. The portals tilt inward slightly from the roof to the deck and are of board and batten style.

The board and batten wall coverings are sagging and in need of repairs.

The floor is covered with horizontal boards with two runways on top. The undergridding has six boards pinned thickness wise together around the main structural brace where it meets the abutments.

The abutments have been extensively patched with concrete.

Good



Furnace Covered Bridge  
 Columbia County  
 Zone 18 E377020 N4529200  
 (38-19-20)

Johnson Covered Bridge  
 Columbia County  
 Zone 18 E374970 N4526050  
 (38-19-37)

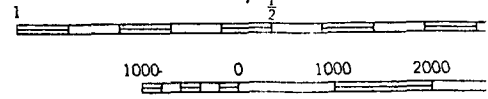
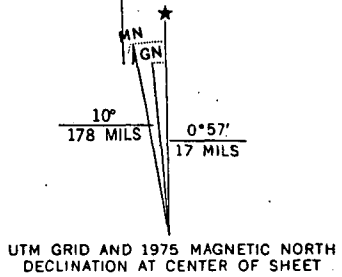
(SHAMOKINI)  
 5665 1 SE

Mapped, edited, and published by the Geological Survey  
 Control by USGS and USC&GS

Topography from aerial photographs by multiplex methods  
 Aerial photographs taken 1942. Field check 1944  
 Culture revised 1955

Polyconic projection. 1927 North American datum  
 10,000-foot grid based on Pennsylvania coordinate system,  
 north zone  
 1000-meter Universal Transverse Mercator grid ticks,  
 zone 18, shown in blue

Boundaries shown in purple compiled in cooperation with



CONTOUR  
 NATIONAL GEODETIC